

MAIN STREET PIZZA
 265 MAIN STREET MCBRIDE, BC
 PIZZA - CALZONE - GARLIC BREAD
 CHICKEN - WINGS - GIFT CARDS
 WEDNESDAY - SATURDAY 11AM-8PM
 (778) 258-4991

Notice of Lien Sale - STORAGE LOCKER AUCTION
 In Accordance with the Warehouse Lien Act, the contents of McBride Self Storage Unit 1 located at 927 Second Avenue, McBride, B.C. rented by CLIFFORD FERGUSON will be sold by auction at 10:00AM on Saturday, August 19, 2023. This will be a cash sale and all contents of the locker must be removed by the successful bidder immediately following the auction.
 Rick Thompson
 McBride Self Storage
 Box 954
 McBride, BC V0J 2E0
 250-569-7620

Heartland RESTAURANT 250-569-0032

Help Wanted - Cooks, Servers and Dishwashers.
 Please apply at Heartland Restaurant.

What's for lunch on Thursday?
TACO-IN-A-BOX

CALL US OR CHECK OUR FB PAGE FOR OUR DAILY SPECIALS!
 Monday - Saturday - 8:30am - 5 pm
 Follow us on Facebook - fb.me/youarewelcomehome
 Call us - 250-569-0215
 Welcome Home **Essential oils 30% off***
*doesn't include therapy roll-ons & sprays

McBride & District PUBLIC LIBRARY 250-569-2411
 521 Main Street McBride, BC V0J 2E0
SUMMER HOURS
 Tuesday 10-8
 Wednesday and Thursday 10-5
 Friday 12-8
 Saturday 12-5
 library@mcbridebc.org mcbride.bc.libraries.coop

Robson Valley Septic & Water Hauling
 Right-to-your-RV Septic & Water
 Bulk Water Delivery
 Dome Creek, McBride, Valemount, Blue River
250-569-7812
 "The Friendly Little Truck!!"

McBride AG Foods 250-569-0140
 Check Out Our **CASE LOT SALE Next Week**
SENIOR'S DAY 65+
 Every Wednesday - 10% Off
 HOURS:
 Monday to Saturday: 6:30am to 6:30pm
 Sunday: 9:00am to 5:00pm
FRESH FISH FRIDAYS

HISTORIC MCKALE HOUSE
 421 Main Street 250-569-7176
HOURS: WED.-FRI. 11-4; SAT. 10-2
 Puppets! Greeting Cards! Gummies!
 \$5 Grab bags for kids!
50% off all Little Golden Books!!

FREE The Little McBride Paper FREE
 Serving BC's Friendliest Town and Area since 1996!!!
 For the week of Wednesday, August 16th, 2023

Celebration of life
 Mabel Alaire Moore
 August 23, 1953 - April 28, 2023
 August 26, 2023 at 1:00p.m. in the
 McBride Evangelical Free Church, 135 Lonsdale Street.
 Light refreshments to be served afterwards.
 Donations of desserts and finger foods would be appreciated.

YARD SALE
 St. Patrick's Yard/Bake Sale - August 19, from 10-12. Weather Permitting.

THRIFT STORE
 We "Thank You" everyone for donations and support every week. "Thank You" to our Volunteers for their help and support. We will be having Dollar Bag Days on Tuesday, August 22nd, and Friday, August 25th. This is only with the clothes, and we will provide the bags. We will be closed the last week of August to put in our fall clothes and replenish stock. Open again on Tuesday, September 5th.

COMING EVENTS
 Three Valleys Community Development Cooperative is having the first apple pressing of the season on Sunday, August 20th at Dunster Community Hall from 2pm to 4pm. You must register with Pete Amyoony if you would like to bring apples for pressing. Call at 250-968-4334 or e-mail peteam@telus.net. There are a limited number of spaces at each pressing so call early for details and to reserve a space. We have double tubs for washing the apples so you can bring ground'falls.

2nd Annual Tour de Read Road Family Bicycle Rally. SAT., SEPT. 9, 8AM, FREE, DUNSTER HALL. 4km, 10km or 20km options. Ice Cream, Fresh Drinks and Door Prizes. Dunster Farmers Market to follow with Local Burgers! T-Shirt pre-ordering: dunsterfass@gmail
Dome Creek Harvest Market "Fall into Christmas", September 16, 2023 from 10:00am - 2:00pm. Event to be held at Dome Creek Recreation Center and the Heritage Hall, Dome Creek. Vendors welcome, no table charge. Contact Laura: latrimble@outlook.com or 778-349-5710.

LIBRARY NEWS
Used Book Sale - In the library garden: come pick up a bargain! Children's books, adult books, DVDs and magazines. Wed., 16th August, 11am-2pm.
Summer Reading Club - End of summer celebration and medal ceremony: Wed., 23rd August 3:30-4:30pm. For all Summer Reading Club participants - even if your reading logs aren't quite finished, bring them along!
Tuesday Chess Club - Taking a break until the Fall.
D&D for Teens - Tues. 6-7pm. Ages 12-18. Group is currently full, but please call if interested.
Sunshine Stories - Every Thurs. 10:30-11:00am. For 0-5s and caregivers; songs, stories and fun! In partnership with Decoda Literacy Solutions/Literacy Task Group.
Summer Book Bingo - for adults. Pick up a "bingo card" from the library and play along as you complete your summer reading! Get your entries in before Monday, 11th September to be in for a chance of winning the bag of prizes!
Book Clubs for Adults - We now have two monthly book discussion clubs for adults - Thurs., 17th August, 1:30pm is on Five Little Indians by Michelle Good. Thurs., 24th August, 1:30pm is on the topic of "Read with Reese (Witherspoon)". Call for details! 250-569-2411.
Free Legal Advice - Free, confidential 15-minute appointments with solicitor and barrister Jesse Stamm in the library, via Skype. Next session: Tues., 5th Sept., 6pm. No need to register, but please arrive promptly at 6pm.
Weekly Adults' Programs - Fibre Artists Knit & Crochet Group (Thurs., 10am) - beginners welcome: in the library, and on-line too. Writing Group (Fri., 1:30pm) - in the library. Call 250-569-2411 for details of either program.
Collection/Delivery Service - We are still happy to prepare book/DVD/puzzle orders for you, and deliver to your doorstep. Call 250-569-2411 or email library@mcbridebc.org to place your order.
Summer Library Hours - Tues. 10-8, Wed. and Thurs. 10-5, Fri. 12-8, and Sat. 12-5.

All our trains are back! Drop by McBride Station for more information! VIA Rail Schedule viarail.ca Phone: 1-888-842-7245
 Going West, Train #5 - Sundays, Wednesdays, Fridays...2:44pm
 Going East, Train #6 - Mondays, Thursdays, Saturdays...12:18pm
 Dome car included! Baggage car - bikes, caged pets, kayaks (fees apply).

Important Phone Numbers
 EMERGENCY 9-1-1 Gov't Serv. BC .250-569-3760
 R.C.M.P. 250-569-2255 Village 250-569-2229
 Hospital 250-569-2251 Reg'l Dist' 1-800-667-1959
 Health Unit 250-569-2251 RV Comm. Srv. 250-569-2266
 K to 7 School .. 250-569-2721 Food Bank 250-569-3186
 High School 250-569-2295 Fire Hall 250-569-3117
 The Little McBride Paper
 250-569-3110

BC BUS...844-564-7494 Report Forest Fires - 1-800-663-5555
 Inquiry B.C.-1-800-663-7867 - For Toll Free Calling to Provincial Numbers ...
 Dial this Number 1st and ask operator to connect you to provincial department.

Take a Break in McBride...B.C.'s Friendliest Town!!

Gigglin' Grizzly Pub
 "We've got the pots, we've got the pans,
 but we need a cook"
 Please contact 250-569-0101
 or grizzlypub@telus.net

ROBSON VALLEY DRYWALL SERVICES
 call or text 7782017114
 @robsonvalleydrywallservices

McBRIDE HOTEL
 250-569-2277
 100 First Ave.
COLD BEER & WINE OFFSALES 7 DAYS A WEEK

HELP WANTED - Reliable Server
 Drop off resume at the Hotel

Mr. Roth's Famous Popcorn
Organic Dairy Cream-On-Top, Milk, Quark, Cheese, Cream
Bulk Organics Ancient Grains, Rice, Beans
Homemade Frozen Meals Sourdough Baking, Cinnamon Buns
Grassfed Chem/Med-FREE Beef, Sausage & Smokies
Homemade Ice Cream Sandwiches Return-It Ticket Kiosk

Uncle Mark's Tasty Food
 926-1st Ave McBride (250) 569-3003
 www.unclemarks.ca
OPEN... Monday - Friday 8-5

JNR AUTO 250-569-2666
 1021 SE Frontage Road
LICENSED AUTOMOTIVE & DIESEL MECHANIC
 MONDAY to FRIDAY 8:30am - 4:30pm
 SATURDAY & SUNDAY - CLOSED

HORSESHOE LAKE VENTURES
 377 Main Street McBride, B.C.
 250-569-0075

Check out Stihl's selection of cordless tools!
 •Feed and Farm Supplies •Dog and Cat Food
 •Full Hydraulic Hose and Fitting Supply
 •Agricultural Parts/Repair •Automotive Parts/Accessories

WHISTLE STOP GALLERY 250-569-8891
 Visit the Whistle Stop Gallery
 Home of Robson Valley artists and artisans since 2002.
 Open 9 to 5 daily in the train station

BRKH Custom Woodworks Ltd.
 Quality Millwork. 894 1st Ave, McBride
 Douglas Fir, Cedar, Spruce, Birch, Pine
BRKH Custom Woodworks Ltd.
 V-Joint, Flooring, Decking, S4S, Shiplap, Moulding, Custom Work, Channel Siding
 admin@brkh.ca 250-569-3175 www.brkh.ca

Delivering Fuel
East to McBride &
Valemount



Four Rivers
Co-operative

Commercial, Farm & Personal

Visit our Gas Bar in Prince George!
6749 Westgate Avenue - Tel: 250.964.2697

Prince George: Tel: 250.564.3488 TF: 866.309.2667 Fax: 250.564.3433	Valemount Cardlock: 1500 - 9th Avenue Valemount BC TF: 866.309.2667	McBride Cardlock: 2130 Zeidler Road McBride BC TF: 866.309.2667
--	--	--



VALLEY MUSEUM & ARCHIVES

"sorry I'm late, I saw a rock!"
"Sound like someone you know?"
This next Summer Series museum event
is for the rock hounds!
Saturday, August 26 from 10:30-12:30
at the McBride Museum.
Presenters from the Prince George Rock Club
share their story & expertise.

Equipment for Hire M4 Construction



Gerald Moore
250-569-7147

Mini Excavator - Landing Clearing, Tight Spaces,
Water Lines, Hydro Lines, Septic Lines, Trenches

Skid Steer - Landscaping Leveling, Debris Removal

House of Jasper Silver Studio

141 Dominion St. McBride

www.HouseOfJasper.com/contact

Studio Hours:

Sat. & Sun.

11:00-3:00

McBride TGP Grocery Store

211 Main Street 250-569-2525

BACK TO SCHOOL - School Lunch is On Us!
Enter to Win in Store
FREE School Lunch For A Week!
TGP Gift Card worth \$50!

August 17-23

Co-Op Gold Potato Chips

200g or Kettle Cooked 180g - 2 for 3.00

KRAFT Dinner

156-225 g or KD Cups 58 g

Select Varieties 2 for 3.00

Armstrong Cheddar or Mozzarella Cheese

750 g - 10.99

Co-op Gold Bathroom Tissue

Triple 6's - 5.49

OPEN 7 Days per week 8am-8pm

ROBSON VALLEY IDA TELEPHARMACY

We are open Monday-Friday 9-5
Closed Saturday & Sunday
www.robsonvalleyidapharmacy.com
250-569-8811
#3 - 411 Main Street, McBride

ON SALE

SELECT ENSURE

PACKS OF 6

\$10.99

BIRTHDAY WISHES AUG. 16-22

Amy Quam, Levi Cole, Jedin & Jordin Klassen, Annie Fode, Jessie Littlechild, Jodi Littlechild, Paige Molendyk, Annie Han, Catherine Blouin, McKinley Hicks, Les Hack, Raj Basran, Sonnia Carmont, Susan Blouin-Thompson, and to any we have missed, Happy Birthday!

COMMUNITY ANNOUNCEMENTS

Quiet space available. Our cedar log church building will be available to community members who are looking for a quiet, getaway space for a couple of hours. The building, which has wi-fi, is available for your use on Thursday evenings from 6:30 to 8:30pm. A host person will be on site. More info? Call Kim 250-968-4467.

McBride Community Market every Friday from 11:00am to 2:00pm until Sept. 1, 2023, in the pavilion at Steve Kolida Park. New vendors welcome. Make it, bake it, grow it or second hand sales. Tables \$10/week, children under 12 \$2.00, non-profits free. Provide your own table. There will be a concession every week. For further info or to book a space contact Jackie Edwards 250-569-7101 jackie.c.edwards@gmail.com

THE DUNSTER FARMERS MARKET from 11:00am to 1:00pm and run every Saturday until September 30th. No charge for vendors - everyone welcome! Our famous "Buy-Local Burgers" will be back again! Tell all your friends and bring them along! For more information call Pete at 250-968-4334.

RVGS NEWS

McBride RVCS: For more information call or email: 250-569-2266/events@rvcsbc.org. All events are located at 942 3rd Ave. McBride, and no registration is required, unless otherwise stated.

MONs Family Place Drop-In is on Mondays from 9am-noon at RVCS. Join for connection with other families, parenting resources and fun for you and your 0-6 year old children. No registration required. For more information call 1-844-324-2004 or email: events@rvcsbc.org. August 28 - Play at the Arena (461 Columbia Street).

MON through THURS, McBride RVCS has a FREE FOOD PANTRY that's available to all! Emergency top-up food is accessible to our clients, preschool program and anyone who walks through the door. We share and accept donated foods that are safe and fresh for use, this project is made possible thanks to grant funding from United Way of BC, and the residents of the Robson Valley! Contact RVCS at 844-324-2004 or email foodsecurity@rvcsbc.org. The local Food Bank is also available: 250-569-3186.

FRI's Caregivers and children ages 0-5 years and their siblings are invited to join us for Mornings in the Park at the Steve Kolida Park in the mornings from 9am-12pm until August 25th. There will be games and activities to encourage healthy development and attachment with caregivers. Registration is NOT required. This program is facilitated by the Infant Development Program.

BUY, SELL, RENT & MISC.

For Sale-Frigidaire CFEF3054UWK Range (white) and a NuTone Allure Range Hood. \$425 for the pair. Phone 250-569-3110•For Sale-2011 Nissan Leaf. Range 85 km. We have saved a lot of money using the Leaf just for between home and town, and now we are upgrading. For more information call Jonathan 250-569-7504•For Sale-2009 Toyota Matrix, 327000km, needs new engine, still runs on 2 cylinders, \$800, call 250-569-3488 or text 250-569-7212. •For Sale-2 Storage Sheds - 10x16 - white metal exterior on 2 skids, 60" door. 4,500 each. Ph:780-903-9129•For Sale-Raised Garden Beds, 10'x4'x2' with steel corners & 3" timbers. \$400 each. Phone 780-903-9129•For Sale-Stihl and Husky chain saws, a good selection of bars and chains to get ready for firewood season. Phone Warren Ph: 250-569-7469.

CHURCH NEWS N' THINGS

McBride Evangelical Free Church on First Avenue at Lonsdale Street. Sunday worship at 10:30am. Phone 250-569-2378. •Anglican United Church - Downtown Thrift Store on Dominion Street is open Tuesdays & Fridays from 1 to 3pm. Clothes and Household Goods•Sunday worship services at McBride Anglican United Church are held at 10am for in-person worship (vaccinations not required.) All are welcome; we welcome all ages, all genders and sexual orientations, all races, all abilities, all are beloved members of God's family. We usually celebrate Communion the 3rd Sunday of each month. Minister Kim's phone 250-968-4467•Seventh-day Adventist Church Ph: 250-569-3370, Pastor Ph: 1(250)-808-7399•Adventist Community Service (Dorcas) Open Tuesdays 1-3pm. contact numbers 250-569-2479 Terri, 250-569-2527 Esther. •Foodbank contact number is 250-569-3186. •St. Patrick's Catholic Church Ph: 250-569-2606. Call to Confirm. •Mountain Chapel (POAC) at Third and Main St. McBride Services Sundays at 11am. Everyone Welcome. Ministers phone 250-569-0291.

Please contact The Little McBride Paper with all coming events, news, trivia, comments, etc!! Phone: 250-569-3110, email: contact@fpas.ca, P.O. Box 441, McBride, B.C. V0J 2E0 or drop off at 455 King St. If we don't know about it, we can't inform the public about it! And check out our website www.fpas.ca.

Scott & Susan (Oscar & Broom)

All articles and ads are not the expressed opinion of this paper or it's owners.

Take a Break in McBride...B.C.s Friendliest Town!!



Robson Valley Pet Hostel

Grooming & Boarding

Ann Schwartz - Animal Health Technician

250-569-3319 Website with information and galleries:
www.pethostel.ca

Alaina Chapman RMT

Registered Massage Therapist
Monday, Wednesday & Thursday
Ph: 250-566-1040 To book an appointment

Gary Schwartz
Farrier Service
250-569-3319
McBride, BC

THE HAIR SHOPPE

803 3rd Ave.
side entrance

778-258-0343

1-877-295-0655
www.monasheecomunications.ca
accounts@monasheecomunications.ca

WIRELESS INTERNET

McBride / Dunster / Tete Jaune / Valemount

Cougar Den Cabins

250-569-7308

Daily, Weekly & Monthly Rates
1800 Samson Rd. McBride (bottom of Lucille mountain)

D & T INDUSTRIES
250-569-7758 / 7050

Before the leaves turn
and school re-turns,
Stop by the Beanery 2...
Patio is Open!! 250-569-0133
Mon.-Fri. 6am-5pm, Sat.&Sun. 9am-5pm Closed-Stat Holidays

Integris Insurance
Services
Rosemary L. Hruby, CAIB
250-569-2264

Is your hot water tank
getting old?

Insurers require replacement of hot
water tanks that are over ten years old

HIGH COUNTRY RENTAL & REPAIR



4700 HWY 16 WEST
MCBRIDE, BC V0J 2E0

TOLL FREE: 877.926.7099

LOCAL: 250.569.7099

SERVICE@HIGHCOUNTRYREPAIR.CA

ATV | DIRT BIKE | SNOWMOBILE | LAWN & GARDEN

WWW.HIGHCOUNTRYREPAIR.CA

Tuesday-Saturday OPEN 10 am - 6 pm

Sunday - CLOSED

Monday - CLOSED

For after hours text Elliott at 250-569-7099

Meraki Builders Construction and Renovations

250 569 7885 (Mitch) 250 569 4109 (Brenden)

Unprecedented world wide natural disasters are caused by climate change, says science and the media. The Bible tells of a great time of trouble caused by God withdrawing His protection just before Christ returns.

Contact Bible Truth. Phone 250-569-7077. Box 185, McBride, B.C.

WANTED TO BUY

High Grade Binoculars 8x60 or higher.
Top Price Paid.
Call 250-569-0311



Corporation of the Village of McBride

NOTICE OF PUBLIC HEARING **ZONING AMENDMENT BYLAW 818, 2023**

A Public Hearing will be held on **Tuesday August 22, 2023** beginning at **7:00 pm** in **Council Chambers** located at **100 Robson Centre, 855 SW Frontage Road**. Zoning Amendment Bylaw 818, 2023 will be considered at this Public Hearing. Amendments to Zoning Bylaw 703, 2010 include the following:

Add the IH-1 zone under section 5.1 as follows:

IH1 Institutional Housing Zone

Add section 23.0 as follows:

23.0 INSTITUTIONAL HOUSING ZONE – IH -1

23.1 The regulations in this Section apply to land within the Institutional Housing (IH-1) zone.

23.2 The use of land, buildings and structures is restricted to the following **PRINCIPAL USES**:

- a) RESIDENTIAL-INSTITUTIONAL HOUSING

23.3 In the Institutional Housing (IH-1) zone, the following **ACCESSORY** uses are permitted:

- a) ASSEMBLY HALL
- b) COMMERCIAL KITCHEN
- c) HOME CRAFT
- d) HOME OCCUPATION
- e) PROFESSIONAL SERVICES
- f) RECREATIONAL FACILITIES
- g) RETAIL
- h) SERVICE COMMERCIAL
- i) ACCESSORY DWELLINGS FOR THE SHORT-TERM HOUSING OF MEDICAL RESIDENCY STAFF AND STUDENTS

23.4 The minimum parcel size for subdivision in the Institutional Housing (IH-1) zone shall be 1000 square metres (10,764 sq.ft.).

23.5 The maximum permitted density for a RESIDENTIAL- INSTITUTIONAL HOUSING use shall be forty DWELLING UNITS per hectare (sixteen DWELLING UNITS per acre).

	Minimum setbacks			MAXIMUM SITE COVERAGE	MAXIMUM BUILDING HEIGHT
	REAR	FRONT	SIDE		
RESIDENTIAL-INSTITUTIONAL HOUSING	3 m where abutting a street (10 ft.) 7 m where abutting a residential parcel (23 ft)	3 m (10 ft.)	1.5 m (5 ft.)	50%	15 m (49 ft.)

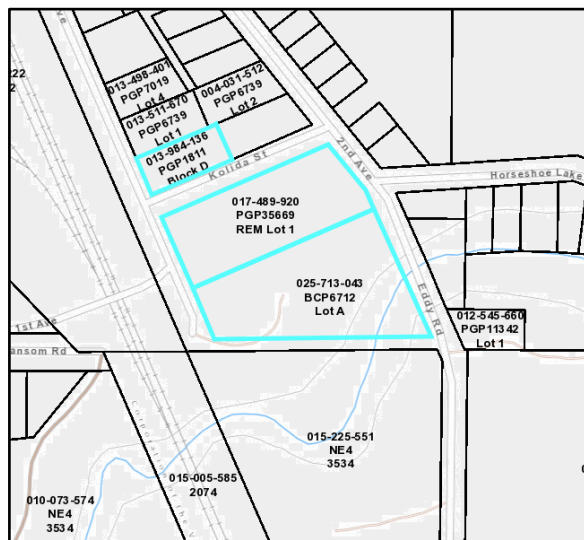
Conditions of Use:

Where more than one dwelling is constructed, a pedestrian walkway must be constructed to provide universally accessible access to the primary entrance of each building.

- 1. The following administrative amendments are as follows:
 - 4.1 Section 11.11 Site Specific amended to be removed from the Bylaw
 - 4.2 Section 23.0 Parking and Loading Requirements amended to Section 24.0
 - 4.3 Section 24.0 Fencing and Screening amended to Section 25.0
 - 4.4 Section 25.0 Flood Plain Elevation and Setbacks amended to Section 26.0

The Zoning map of the Village of McBride Zoning Bylaw No. 703, 2010 is hereby amended by changing the zoning of *Lot A, Plan BCP6712, District Lot 5316, Cariboo Land District, Lot 1, Except Part Plan BCP 6712, D/L 5316, Cariboo Land District, PGP 35669, and Block D, Plan PGP1811, District Lot 5316, Cariboo Land District, Except Plan PGP6739, & EXC PL B7393* and forming part of this bylaw as indicated below and cross-hatched on the map attached as Schedule “A” which map is declared to be and forms an integral part of this Bylaw:

**From: Residential Zone (R2) and Residential 4 (Multi-family Zone
To: Institutional Housing Zone (IH-1)**



Anyone who believes they will be affected by the proposed Bylaw amendments is invited to attend the public hearing to present verbal or written submissions to Council for consideration. Written submissions will also be received by the Village Office until 4:00 pm on Monday August 21, 2023. Emails will not be accepted as submissions. The proposed Bylaw can be viewed at the Village Office during regular business hours. Please call the Village Office for further information 250-569-2229.

ROBSON VALLEY RECREATION CENTRE

Facility Hours August 13 - September 9, 2023

461 Columbia Street, McBride BC
250-566-3360



REGIONAL DISTRICT
of Fraser Fort George

155 George St. Prince George, BC

1-800-667-1959 CommunityServices@rdffg.bc.ca

Sunday	Monday	Tuesday	Wednesday	Thursday	Friday	Saturday
August 13	August 14	August 15	August 16	August 17	August 18	August 19
Noon - 9 PM	6 AM - 9 PM	6 AM - 3 PM	6 AM - 9 PM	6 AM - 9 PM	6 AM - 9 PM	CLOSED
August 20	August 21	August 22	August 23	August 24	August 25	August 26
Noon - 9 PM	6 AM - 9 PM	6 AM - 3 PM	6 AM - 9 PM	10 AM - 5 PM	CLOSED	CLOSED
August 27	August 28	August 29	August 30	August 31	September 1	September 2
CLOSED	CLOSED	CLOSED	CLOSED	CLOSED	CLOSED	CLOSED
September 3	September 4	September 5	September 6	September 7	September 8	September 9
CLOSED	CLOSED	6 AM - 3 PM	6 AM - 9 PM	6 AM - 9 PM	6 AM - 3 PM	Noon - 9 PM

Please note:

Facility hours are subject to change - calling 250-569-3360 prior to your visit is encouraged.

Thank you for your understanding.

Vacation Bible School



Monday, August 14 – Friday, August 18

6:30 PM – 8:30 PM

at the

McBride Seventh-day Adventist Church

1075 Lamming Pit Road, McBride BC

Registration from 5:30 PM – 6:30 PM

on Monday, August 14

Phone 250-968-4493



Corporation of the Village of McBride

NEWS RELEASE

August 11, 2023

VILLAGE OF MCBRIDE APPOINTS INTERIM CHIEF ADMINISTRATIVE OFFICER

McBride, BC-August 8th, 2023-The Village of McBride is pleased to announce the appointment of Leslie Groulx of Leslie Groulx Consulting to the position of interim Chief Administrative Officer, effective August 8th, 2023. Ms. Groulx brings a wealth of experience and over 18 years in Local Government Administration including economic development recovery for communities and considerable experience in management and organizational best practices in both local government and private enterprise. In addition, she is well-versed in the unique needs of a rural municipality. She will be engaged part-time for a three (3) month term. Her assistance will include the hiring of a permanent CAO, working with Mayor and Council to implement Council's strategic direction and with staff to carry out the business of the municipality. The Mayor, Council and staff are looking forward to working with Ms. Groulx.

Media contact:

Gene Runtz

Mayor, Village of McBride

Tel.: 250-569-2229

Email: mayor@mcbride.ca

The
Goat Shed

WORLD MOSQUITO DAY

S T I B I H X E I C P B O O I
 K M B Z G E K M V T A U Z U N
 L A E S A E S I D E V R F G F
 N L T H Z S R M Q P N H E Q E
 O A W V P M O S Q U I T O Z C
 I R E R Y O F E M A L E S E T
 T I E T A R B E L E C I Y H E
 I A N O P H E L I N E T X S D
 D U H P C U J V H E R N A T G
 A K B T R M D U O A O E A N Z
 R E A V R A L V P C S W I E C
 T B O Y L N A U G U S T Z I M
 J R T I M S N A R T S I Q T K
 L A T I P S O H Z E X R D A N
 L A C F G T R J T X Q P V P N

ANOPHELINE
 AUGUST
 BATCH
 BETWEEN
 CELEBRATE
 DISCOVERY
 DISEASE
 EVENTS
 EXHIBITS
 FEMALE
 HOSPITAL
 HUMANS
 INFECTED
 LARVAE
 MALARIA
 MOSQUITO
 PARTY
 PATIENTS
 RONALD
 ROSS
 SPREAD
 TESTING
 TRADITION
 TRANSMIT
 TWENTIETH

Take a Break in McBride...B.G.s Friendliest Town!!