

Advantage Insurance Services Ltd.
Rosemary L. Hruby, CAIB
250-569-2264

PLEASE DRIVE CAREFULLY

Respect the Winter Road Conditions

There are entrance requirements for heaven. Or, has modern grace given a ten percent discount on God's holy law?
Contact Bible Truth. Phone 250-569-7077.
Box 185, McBride. B.C.

VALLEY MUSEUM & ARCHIVES
Winter Exhibit: Everything Music
Open 11am - 4pm Tuesday to Friday
FREE ADMISSION Happy Holidays!

TGP McBride TGP Grocery Store
211 Main Street 250-569-2525

Safe & Happy Holidays and a Merry Christmas.

Congratulations to our 52nd Shopping Spree Winner from SCRATCH SNAP & WIN Bruce Oconner

McBride and area Everyday Best Values
~Local Savings Program Now In Effect~
OPEN 7 Days per week 8am-8pm

ROBSON VALLEY IDA TELE PHARMACY
We are open Monday-Friday 9-5
Closed Saturday & Sunday
www.robsonvalleyidapharmacy.com
250-569-8811
#3 - 411 Main Street, McBride

CLOSED
SATURDAY, DECEMBER 23RD - TUESDAY, DECEMBER 27TH

CLOSED
SATURDAY, DECEMBER 31ST - MONDAY, JANUARY 2ND

REGULAR HOURS RESUME TUESDAY, JANUARY 3RD

HAPPY HOLIDAYS EVERYONE!

Delivering Fuel **CO-OP** **Four Rivers Co-operative**
East to McBride & Valemount

Commercial, Farm & Personal

Visit our Gas Bar in Prince George!
6749 Westgate Avenue - Tel: 250.964.2697

Prince George: Tel: 250.564.3488 TF: 866.309.2667 Fax: 250.564.3433	Valemount Cardlock: 1500 - 9th Avenue Valemount BC TF: 866.309.2667	McBride Cardlock: 2130 Zeidler Road McBride BC TF: 866.309.2667
---	---	---

Welcome Home

Join us for LATE NIGHT Shopping!
Fri. December 2nd - open til 8pm
FREE Hot Chocolate & Regular Coffee from 4-8pm
Many new, just arrived items!
Fudge & treats, candles, mugs, jewellery, accessories, bath, gourmet giftables & more!

Follow us on Facebook - fb.me/youarewelcomhome
Monday - Saturday 8:30am to 4pm 250-569-0215

FREE The little McBride Paper FREE

Serving BC's Friendliest Town and Area since 1996!!!
For the week of Wednesday, November 30th, 2022

McBride Hospital Auxiliary News
Fund-raising! Sock it Away fundraiser is still undergo, and if you haven't contributed yet to the sock fundraiser, you can get in touch with Eleanor Johnson or Carol Hammar to do so. Just sock away your change, and donate to the McBride Hospital Auxiliary for the direct patient care fund.
Raffle tickets are now available for sale 3 for \$5, for the 1st Prize of a Christmas Hamper and Turkey, and 2nd Prize for a Turkey. Tickets are available from any of the Hospital Auxiliary Members, at McKale House, Advantage Insurance, and McBride AG Foods.

COMMUNITY ANNOUNCEMENTS
Drop-In Community Basketball at McBride Secondary School Every Thursday from 7-9PM (November 24th-June 1st). Grade 8 to Adults Welcome.

McBride Christmas Hampers
The McBride Elks and Royal Purple will be doing Christmas Hampers for families and individuals that are having financial difficulties during the holiday season. If you know a family and individual that would benefit from a hamper, please contact Kathy Molendyk at 250-569-7201 after 4:00 p.m. before December 9th. Also, if you would like to make a cash donation or gift card donation to help us fill the hampers, please contact Kathy.

COMING EVENTS
10th Annual Food Bank - Friday December 2. Beanery 2 Bistro in Partnership with Hammar Thompson Holding is Hosting our Annual Food Bank Day. Come and enjoy a hot Beverage and the cost will be Donated to the Robson Valley Food Bank or drop off a Donation any time up to December 24.
General Meeting for McBride Big Country Snowmobile Association On Dec. 13, 2022 @ 6:30pm. Locations: 919 Airport Rd, Private Resident. Join us to get updated information about trails, memberships and events. To have a successful season we need feedback and suggestions to have a great sledding experience in McBride. Everyone is welcome to attend the meeting.

McBride Figure Skating Club - Christmas Skating Show/Bake Sale! Wednesday, December 14, 6:00p.m. at the McBride Recreation Center. Admission by a non-perishable item to the Seventh-Day Adventist Food Bank. **(there will be no concession).**
Christmas Bird Count Sunday, Dec. 18, (count week Dec. 15-21). Feeder watchers are always appreciated, and binocular-carrying-birdwatchers are needed to scout the McBride Bird Count circle. (our 31st and North America's 122nd) Contact Stanleys at 250-569-2596 to volunteer and to make your report.
Community Christmas Dinner 2022 - December 25 at McBride Evangelical Free Church. Are you interested in helping with this community event? Volunteers needed for various tasks such as cooking, serving, cleanup. Please call Kim at 250-968-4467 or email kimkenmcaughton@gmail.com to volunteer. Thank you!

Elks and Royal Purple News
Save those toonies everyone as they are going to come in handy at the Pancakes with Santa event Sunday, Dec. 11 at 9am., Elks Hall, tickets are free & available at Welcome Home.
TOONIES FOR TURKEYS-The McBride Royal Purple provides Christmas hampers to those in need within the community. Hampers consist of a turkey, everything needed for the fixings, some toys/gift cards etc. We will be collecting toonies at the Pancakes with Santa event to help purchase the items needed for the hampers.
TOONIE RAFFLE - a big hit at the Canada Day festivities. 10 tickets for a toonie, that's .20 cents a ticket! The raffle table will be full of prizes for all ages.
Elks Hall Booking - New location. Need to book the Elks Hall? Call 778-258-4998 or stop by Main Street Pizza/Mountain View Boutique to rent the hall for your event or meeting.
For Sale Hospital Bed. Single size, comes with extra anti-slip mattress, it is nearly new! Asking \$1500.00. Call Flo Mynio at 250-569-3254 for more details and to view.
New Year's Dance - Elks Hall - Saturday, December 31st - 9:00-1:00 p.m. Come out and listen, kick up your heels and bring in 2023 to Roadside Splitter. Tickets are \$25.00/person, which includes an 11pm lunch and party favors. Tickets will be on sale at Welcome Home in November.

BIRTHDAY WISHES NOV. 30-DEC. 6
Antonio Ynoa, Nicole Molendyk, Michelle Desormeau, Susan Glines, Nic Mortensen, Jeremy Kuit, Garth Jones, Matthew Smathers, James Gredling, and to any we have missed, Happy Birthday!

OAPO NEWS
The OAPO Seniors Lunch December 6, 2022 at 12 noon at the Elks Hall. Tickets are FREE which must be presented at the door. There are Door Prizes. Tickets can be pick up at Welcome Home or Beanery 2 Bristo. All Seniors of McBride area Welcome!

* * * * *

Please contact **The Little McBride Paper** with all coming events, news, trivia, comments, etc!! Phone: 250-569-3110, email: contact@fpas.ca, P.O. Box 441, McBride, B.C. V0J 2E0 or drop off at 455 King St. If we don't know about it, we can't inform the public about it! And check out our website www.fpas.ca.
Scott & Susan (Oscar & Broom)
All articles and ads are not the expressed opinion of this paper or it's owners.

Take a Break in McBride...B.C.s Friendliest Town!!

HORSESHOE LAKE VENTURES
377 Main Street McBride, B.C.
250-569-0075

WE NOW HAVE HORSESHOE LAKE VENTURES GIFT CARDS

- Feed and Farm Supplies
- Dog and Cat Food
- Full Hydraulic Hose and Fitting Supply
- Agricultural Parts/Repair
- Automotive Parts/Accessories

THE HAIR SHOPPE
803 3rd Ave. side entrance **778-258-0343**

Cougar Den Cabins
250-569-7308
Daily, Weekly & Monthly Rates
1800 Samson Rd. McBride (bottom of Lucille mountain)
GRAVEL TRUCK AND EXCAVATOR SERVICES.
PHONE 778-258-0093 OR 250-569-7885

A LITTLE THINKER...
Why was the cell phone wearing glasses?
It lost its contacts.

Come Drive with Our Team

WINTER ROAD MAINTENANCE OPERATORS NEEDED

- Seasonal full-time
- Overtime opportunities
- Set shifts
- On-site training

REQUIREMENTS

- Valid Class 3 license w/air or higher
- Safety conscious
- Verifiable snowplow experience an asset
- Ability to work outdoors in all weather conditions

EMIL ANDERSON Email resume including current drivers abstract to: hr@emilanderson.ca
MAINTENANCE | ROBSON

Meraki Builders Construction and Renovations
250 569 7885 (Mitch) 250 569 4109 (Brenden)

December 2 - the start of our 3rd Annual Beanery 2 Secret Santa Gift Certificate Draw. 1 Drawn daily each day we are open up to December 24. Come on in grab a coffee, snack, or meal and enter your name in the Draw. 250-569-0133

Mon.-Fri. 6am-5pm, Sat. 9am-5pm Closed Sun. & Stat Holidays

Robson Valley Pet Hostel
Grooming & Boarding
Ann Schwartz - Animal Health Technician
Website with information and galleries: www.pethostel.ca
250-569-3319

HORSESHOEING
Gary Schwartz
Farrier Service
McBride, BC
250-569-3319

Alaina Chapman RMT
Registered Massage Therapist
Monday, Wednesday & Thursday
Ph: 250-566-1040 To book an appointment

UNCLE MARK'S CUSTOM MEAT CUTTING
Field to Plate Service, ☺ *"Stress free animals humane harvest, custom sausage, make better meat"*
\$5 bags of bones and bird suet Mark Roth 250-569-7805

MONASHEE COMMUNICATIONS
1-877-295-0655
www.monasheecomunications.ca
accounts@monasheecomunications.ca

WIRELESS INTERNET
McBride / Dunster / Tete Jaune / Valemount

INSULATION & DRYWALL
250-569-0320
HISTORIC MCKALE HOUSE
421 Main Street 250-569-7176
Late Night Shopping FRI., DEC. 2
OPEN till 8pm
...Sip on a free hot apple cider while you shop!
Reg hrs: Wed-Fri 11-4; Sat 10-2



D & T INDUSTRIES
250-569-7758 / 7050

ANOTHER LITTLE THINKER...
What do you call a beehive without an exit?
Unbelievable.

Come & visit our studio! Open until Christmas



House of Jasper Silver Studio

141 Dominion St. McBride **OPEN**
Fri. Sat. & Sun
11:00-3:00

www.HouseOfJasper.com/contact

Robson Valley Septic & Water Hauling

Right-to-your-**RV Septic & Water**
Bulk Water Delivery
Dome Creek, McBride, Valemount, Blue River
250-569-7812

☺ "The Friendly Little Truck!!" ☺



Robson Valley Home Hardware

BUSINESS FOR SALE

250-569-7769 250-569-7084

HIGH COUNTRY RENTAL & REPAIR



4700 HWY 16 WEST
MCBRIDE, BC V0J 2E0

TOLL FREE: 877.926.7099
LOCAL: 250.569.7099

SERVICE@HIGHCOUNTRYREPAIR.CA

ATV | DIRT BIKE | SNOWMOBILE | LAWN & GARDEN

WWW.HIGHCOUNTRYREPAIR.CA

Monday 10am-9pm
Tuesday closed Wednesday closed
Thursday 10am-9pm Friday 10am-9pm
Saturday 10am-9pm Sunday 10am-9pm

After hours parts / service please text (250) 569-7099

WHISTLE STOP GALLERY



250-569-8891

Are you an artist or a crafter?

Head down to the
Whistle Stop Gallery,
we are always looking for
new artists and new ideas!
Open 9-4:30 daily.

Grass fed beef for sale or trade

Lean Hamburger \$5.50/Lb
Stew \$7.10/Lb
Beef Ribs \$5.75/Lb
Dog meat scraps \$4/Lb
Other Beef cuts available.

The following available for sale or trade.
Jersey milk cows,
commercial cow/calf pairs and bulls;
they are quiet, gentle and most are halter broke.
Shop tools & Farm equipment for sale.
Contact Melanie: 250-793-4742

LIBRARY NEWS

Saturday Matinee Movie Screenings - Family-friendly movie screenings beginning at 2pm every second Saturday. Next one is December 3rd, with the movie "Abominable". All welcome. Children under 8 must be accompanied by an adult. Snacks are also welcome!

Book Discussion Group - Next meeting is on Thursday, 15th December at 1.30pm, with a theme of "Christmas Fiction". All welcome.

Sunshine Stories - Program for children aged 0-5 and their caregivers. Songs and stories! Every Wednesday at 10.30am.

Find the Elf - We will be sharing the library with an elf (on the library bookshelf!) throughout December. Each day you find him, you will be entered into a prize draw for a gift bag of goodies. We will be holding three separate prize draws: for children, adults and seniors, so remember to stop by each day and find him!

Community Paramedicine - If you see Community Paramedic Rodger Peterson in the library, feel free to ask him your healthcare questions. He can offer services within the library such as a blood pressure check, blood glucose monitoring, or provide help and advice on a range of healthcare topics, including nutrition and First Aid. So don't be shy - come say hi!

Dementia Support Group (Northern Health) - Thursday, 1st December at 2pm.

Trivia Night - Friday, 9th December at 5.30pm we are hosting another Trivia Night, in partnership with RVCS and Decoda Literacy. Get in touch if you would like to join in the fun!

Santa is back! - Santa will be visiting the library on the afternoon of Saturday, 10th December and will be meeting children by appointment. Call 250-569-2411 or email library@mcbridebc.org to reserve a slot for your family.

Festive Harp Concert - on Saturday, 17th December at 2.30pm, Doreen will be treating us all to some festive harp music, with a free performance in the library. All welcome.

Weekly Adults' Programs - Fibre Artists Knit & Crochet Group (Thurs., 10am) - beginners welcome: in the library, and on-line too. Writing Group (Fri., 1.30pm) - in the library. Call 250-569-2411 for details of either program.

Collection/Delivery Service - We are still happy to prepare book/DVD/puzzle orders for you, and deliver to your doorstep. Call 250-569-2411 or email library@mcbridebc.org to place your order.

RVCS NEWS UPDATE

MONs Family Place Drop-In is now on Mondays from 9am-noon at the elementary school Strong Start room (3rd Ave. entrance) and 1pm-4pm at RVCS 942 3rd Ave. or Steve Kolida Park (Weather permitting). Join for connection with other families, parenting resources and fun for you and your 0-6 year old children. No registration required. Call 250-569-2266 for more info. Dec. 5 - Letters to Santa. Dec. 12 - Santa Craft. Dec. 19 - Ugly Sweater Day. Dec. 26 - Boxing Day STAT Holiday: no FPDI. Jan. 2 - STAT Holiday in lieu of New Year's: no FPDI.

WEDs Seniors Drop-In Coffee House is on Wednesdays from 1-3pm with Sandy. All seniors are invited to come by for some social time, a warm beverage and snacks at RVCS (942 3rd Ave.). Call 250-569-2266 for more information.

WEDs is JUST DANCE, a dance class for seniors weekly from 3:00-3:45pm at RVCS (942 3rd Ave.) with facilitator Jodie! The next dates are Dec. 1, Dec. 7 & Dec. 15th. No registration is required and attendance is free for this drop-in style program. Contact Jodie for more info: 250-230-8035.

THUR., DEC. 8 from 1-4pm we are creating beautiful wreaths during the Holiday Wreath Making Workshop for Seniors at RVCS McBride 942 3rd Ave. Supplies are provided, though you're welcome to bring special items. Registration required: 250-569-2266 / events@rvcsbc.org.

THURS., DEC 8 from 2:45-4:30pm it's the Christmas Crafty Fun Fair at McBride Centennial Elementary School for 5-12 year olds. Join us for holiday crafts, card making, cookie decorating & more! Kiddos under 5 are welcome with a caregiver. Entry is free but registration is required: please contact events@rvcsbc.org to sign-up! In partnership between PAC, Little Munchkins Daycare & RVCS.

THUR., DEC. 15 3-5pm join the crew during the next Men's Shed Meeting in McBride. We meet at RVCS 942 3rd Ave., where a space has been offered in the interim. Let's discuss topics that matter to us and get this program fully set up! Led by men, for men. Call 250-569-2266 for more info.

WED., DEC. 21 from 1-4pm at RVCS 942 3rd Ave. Eleanor is hosting a Chocolate Making Workshop for Seniors. Registration is required: 250-569-2266 / events@rvcsbc.org.

TUES & THURS it's time to Dance during Community Fitness with Jodie at the Elks Hall. Tues. is from 6:15-7pm and Thurs. is from 7:00-7:45pm. This drop-in program is grant funded by the Federal Government and in partnership with RVCS, and offers free admission to seniors and youth. Other age groups are invited to pay by donation or pay what you can. Call Jodie at 250-230-8035 for more info.

MON through THURS, McBride RVCS now has a FREE FOOD PANTRY that's available to all! Emergency top-up food is accessible to our clients, preschool program and anyone who walks through the door. We share and accept donated foods that are safe and fresh for use. Contact RVCS at 250-569-2266 or email foodsecurity@rvcsbc.org. The local Food Bank is also available: 250-569-3186.

NOV. 25 - DEC. 10 show your solidarity for the 16 Days of Activism Against Gender-Based Violence by displaying purple décor, lights, hearts, etc. on you, your home or business. You can also show your support by taking part in the virtual social media campaign. Keep an eye out for RVCS posts daily during the 16 days where we will share and honour women, take a stand against violence and hopefully inspire the fire from within to make change within our world.

All our trains are back! Drop by McBride Station for more information!
VIA Rail Schedule viarail.ca Phone:1-888-842-7245
Going West, Train #5 - Sundays, Wednesdays, Fridays...2:44pm
Going East, Train #6 - Mondays, Thursdays, Saturdays...12:18pm
Dome car included! Baggage car - bikes, caged pets, kayaks (fees apply).

Important Phone Numbers		
EMERGENCY	9-1-1	Gov't Serv. BC .250-569-3760
R.C.M.P.	250-569-2255	Village250-569-2229
Hospital	250-569-2251	Reg'l Dist' 1-800-667-1959
Health Unit	250-569-2251	RV Comm. Srv. 250-569-2266
K to 7 School ..	250-569-2721	Food Bank250-569-3186
High School	250-569-2295	Fire Hall250-569-3117
School District 57	Dental Office	The Little McBride Paper
1-800-256-7857	250-569-3434	250-569-3110
BC BUS...844-564-7494	Report Forest Fires -	1-800-663-5555
<small>Inquiry B.C.-1-800-663-7867 - For Toll Free Calling to Provincial Numbers ... Dial this Number 1st and ask operator to connect you to provincial department.</small>		
Take a Break in McBride...B.G.s Friendliest Town!!		

Mr. Roth's Famous Popcorn

Organic Dairy

Cream-On-Top
Milk
Quark
Cheese
Cream


Bulk Organics

Ancient Grains
Rice
Beans

Grassfed
Chem/Med-FREE

Beef
Sausage
& Smokies

Homemade Frozen Meals
Sourdough Baking
Cinnamon Buns

 **Homemade Ice Cream Sandwiches**

Uncle Mark's Tasty Food
OPEN... Monday - Friday 8-5

926-1st Ave
McBride
(250) 569-3003
www.unclemarks.ca

Return-It
TICKET KIOSK

Mountain View Boutique

265 Main St., McBride, BC

 **Apparel, Housewares and more!**
Featuring local artisans.

HOURS
Tues. 10 am to 5pm and Wed. to Sat. 10am to 8pm

Heartland RESTAURANT 250-569-0032

HELP WANTED

Looking for part-time cook, willing to train.

Please drop resume off at Heartland Restaurant, attention Lorna, serious applicants only.

BUY, SELL, RENT & MISC.

Wanted: Stationary Exercise Bike. Please call 250-569-4080••**For Sale**-Purebred Golden Retriever Puppies come with first shots and vet checked. Ready now \$1,000.00 Rosy: 250-569-7386••**For Sale**-7' Cedar Posts \$12.00 each Approx.. 150 posts. Ph:250-569-7733••**For Sale** - 48"x24" Basement Slider Window and a 22"x36" window insert for a metal door. Phone 250-569-3110••**For Sale**-Stihl and Husky chain saws, a good selection of bars and chains to get ready for firewood season. Phone Warren Ph: 250-569-7469.

McBride AG Foods
250-569-0140

ALWAYS CANADIAN

SENIOR'S DAY 65+
Every Wednesday - 10% Off

Check Out Our SUPER SAVER HOLIDAY EVENT in December

NEW HOURS
Monday to Saturday - 6:30am to 6:30pm
Sunday: 9:00am to 5:00pm

FRESH FISH FRIDAYS

Gigglin' Grizzly Pub

Open Thursday, Friday, Saturday and Sunday from 4:00pm
- dine or and take out.
250-569-0101

 **250-569-2666**

1021 SE Frontage Road

LICENSED AUTOMOTIVE & DIESEL MECHANIC

MONDAY to FRIDAY 8:30am - 4:30pm
SATURDAY & SUNDAY - CLOSED

CHURCH NEWS N' THINGS

Anglican United Church - Downtown Thrift Store on Dominion Street is open Tuesdays & Fridays from 1 to 3pm. Clothes and Household Goods. **Sunday worship services** at McBride Anglican United Church are held at 10 am for in-person worship (vaccinations not required.) All are welcome; we welcome all ages, all genders and sexual orientations, all races, all abilities, all are beloved members of God's family. We usually celebrate Communion the 3rd Sunday of each month. Minister Kim's phone 250-968-4467. **Seventh-day Adventist Church** Ph: 250-569-3370, Pastor Ph: 1(250)-808-7399. **Adventist Community Service (Dorcas)** Open Tuesdays 1-3pm. contact numbers 250-569-2479 Terri, 250-569-2527 Esther. **Foodbank** contact number is 250-569-3186. **St. Patrick's Catholic Church** Ph: 250-569-2606. Call to Confirm. **Mountain Chapel (PAOC)** at Third and Main Streets. Following Health rules as they are announced. Services are held Sundays at 11:10am. Everyone is Welcome. Minister's phone 250-569-0291.

NO GENDER DECEMBER

B C T Q U G V B X L R Z H O V
Y R S N E U T R A L C J N O P
I O O N E H K N Y W Z G J U A
S L D R E M G M C B T V E L R
E E B M A U E G I U N O Q P E
R S S N A Y L V L S O Y U R N
U F H G V T X B O Z I R A O T
T D E T S I D C P M T O L N I
C D I S C R I M I N A T I O N
U A Y L U A V O I D C S T U G
R O E T L P P B S Q U I Y N K
T I H U I S D M N R D H C S P
S J T N X I G N I T E K R A M
W Z K C P D E C E M B E R X Q
S E U Q I N H C E T G V S R T

The
Goat Shed

AVOID
BLUE
DECEMBER
DISCRIMINATION
DISPARITY
EDUCATION
EQUALITY
GENDER
HISTORY
IMPACT
LANGUAGE
MARKETING
MOVEMENT
NEUTRAL
PARENTING
PINK
POLICY
PRONOUNS
ROLES
SOCIAL
STRUCTURES
TECHNIQUES
THEM
THEY
TOYS

NOTICE OF PROPOSED PROPERTY DISPOSITION

PURSUANT TO SECTIONS 26(3) & 94
OF THE *COMMUNITY CHARTER*

TAKE NOTICE that the Corporation of the Village of McBride (the "Village") proposes to dispose of its interest in the following land to D & T Industrees (2019) Ltd., of PO Box 282, 940 2nd Ave, McBride, British Columbia, V0J 2E0:

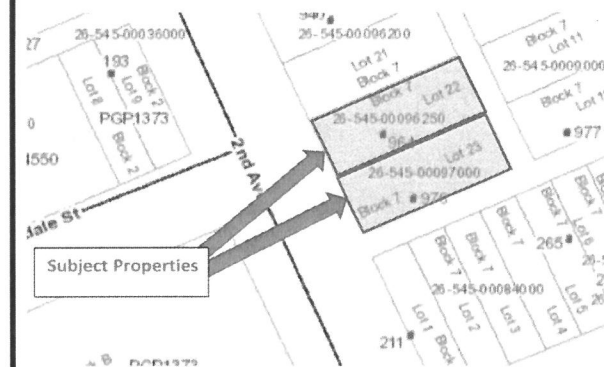
Address: 964 - 976 2 Ave, McBride, British Columbia.
Legal: Lots 22 & 23, Block 7, District Lot 5316,
Cariboo District, Plan 1373 (PID: Lot 22 013-918
346 and PID: Lot 23 013-918-524)

(the "Land")

The proposed disposition of a sale of the Land (the "Sale").
The consideration received by the Village is a purchase price
of \$60,000 and associated costs conveying the Land.

Any enquiries concerning the Sale may be directed to:

Chris Tupy
Chief Administrative Officer
Telephone: 250.569.2229 Email: cao@mcbride.ca



McBride & District

PUBLIC LIBRARY

250-569-2411

521 Main Street McBride, BC V0J 2E0

REGULAR HOURS

Tuesday 10-6

Wednesday and Thursday 10-5

Friday 1-8 Saturday 1-5

library@mcbridebc.org mcbride.bc.libraries.coop

Take a Break in McBride...B.G.s Friendliest Town!!