



Robson Valley Home Hardware
250-569-2284

NOW IN STOCK

- *Onion Sets
- *Seed Potatoes
- *Fresh Supply of Garden Seeds
- *Onion & Garlic Bulbs



250-569-2666
1021 SE Frontage Road

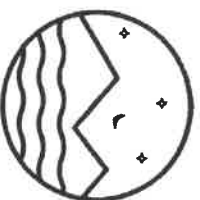
LICENSED AUTOMOTIVE & DIESEL MECHANICS

NAPA Proformer Tractor
Trans Hydraulic Oil - 19L pail \$59.95
Hydraulic AW46 - \$49.95 per pail
Hydraulic AW46 - \$49.95 per pail

MONDAY to FRIDAY 8:30am - 4:00pm
SATURDAY - CLOSED Due to Covid-19

Robson Valley Business Services

Offering Bookkeeping,
Income Tax,
and Computer Services.



RVBS

Lori Gane 250-569-7941

Jim Chicago 250-569-7942

Or check us out at www.rvbs.ca and on

Facebook at [fb.me/RobsonValley.BusinessServices](https://www.facebook.com/RobsonValleyBusinessServices)

Sue & Me Eatery

News from Sue & Me on Main Street

It's okay if you fall apart sometimes... Tacos fall apart but we still love them.

New Hours

Monday Closed Tuesday Closed

Wednesday 11 - 9 Thursday 11 - 9 Friday 11 - 9

Saturday 11 - 9 Sunday 11 - 5

Take Out & Delivery Available

(Tap at The Door or Cash is Still King!)

250-569-0080 *Main St., McBride*

Sue & Me B&B coming soon!

LEVANT ELECTRIC
Serving the Robson Valley
250-569-7286

Dome Creek, BC

FSR #106311

Blair Levant

250-569-2411



McBride & District
PUBLIC LIBRARY
521 Main Street McBride, BC V0J 2E0

CLOSED

UNTIL FURTHER NOTICE

library@mcbridebc.org mcbride.bc.libraries.coop



HORSESHOE LAKE VENTURES
100 Mountain View Rd.
McBride, B.C. V0J 2E0
250-569-0075

We are the local WeldCor Cylinder Depot.
Check out our selection of cylinders and welding supplies.

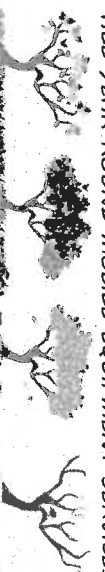
- Feed and Farm Supplies
- Dog and Cat Food
- Full Hydraulic Hose and Fitting Supply
- Agricultural Parts/Repair
- Automotive Parts/Accessories



Serving the Robson Valley for over 10 years!

Darvin 250-569-7758
250-569-7050 Tovi

ALL YEAR ROUND MOBILE EQUIPMENT SERVICES



FREE The Little FREE

McBride

Paper



Serving BC's Friendliest Town and Area since 1996!!!

For the week of *Wednesday, May 6th, 2020*

RVCS NEWS UPDATE

The Great Community Clue Hunt - in McBride, May 4th-10th is "Screen-Free Week" so RVCS and A&W are teaming up to bring you an epic clue hunt!

Starting MONDAY May 4th - Follow the cryptic clues around town and then email events@rvcsbc.org with your final location guess and code word! First two participants to enter will win a meal at A&W!

Here is your clue: "Fishing, camping, hiking... I have spring fever! This place is known by two names, but most call it the... Mother's Day Craft during Family Place - Pick up your free craft kit at RVCS on Monday-Wednesday. We will be making "Layered brownies in a jar" during our Family Place. Limited supply available! Contact charlene@rvcsbc.org or call 250-569-2266 to reserve your free craft kit.

May 7th is the National Child Youth Mental Health day - Take part in the day by sharing photo's of How you are caring for yourself, or others, and how others are caring for you. Use the hashtags on social media: #my7icare #careaboutyou. Colouring sheets will be available for pick up at RVCS offices. Hang completed pictures in your windows to show everyone how you care.

BIRTHDAY WISHES MAY 6 - 12

Anna Christison, Emily Chambers, Herb Butlman, Kay McFarland, Paul Smith, Abe Phillips, Wes Phillips, Alysson Easterbrook, Brandon Vizza, Corson Lipke, Sawyer Sarasin, Archer Barnes, Parker Williamson, Rosemary Hruby, Cooper Cunningham, Joanne Wilson, and to any we have missed, Happy Birthday!

521 NEWS

The McBride and District Public Library will be closed from Tuesday, March 17th until further notice, in line with current guidance that social distancing is vital in reducing the spread of COVID-19. We apologize for any inconvenience this may incur, but the well-being of our patrons and library staff is our main concern. Please do not try to return any library materials (including inter-library loans) until the library reopens: all late charges will be forgiven when we reopen. You are reminded that books can be downloaded and read, or even listened to, using the program OverDrive, via this website.

A LITTLE THINKER...

How do you organize a space party? You planet.

COMMUNITY ANNOUNCEMENTS

The Little McBride Paper is now On-Line at our new website. Check it out at fpas.ca. We are also in the process of uploading all the past issues of The Little McBride Paper onto the website in the Archives section.

The McBride Community Calendar is available on line at the website <https://calendar.mcbride.ca>

HOSPITAL AUXILIARY NEWS

Are you looking for a way to say thank you to and honour the healthcare workers in our community? You can do this by supporting the McBride and District Hospital Auxiliary. Make a May Thank You Donation Campaign. Across the province and the country people are finding different ways to acknowledge the work, dedication and sacrifice of health workers. People in the valley are looking for ways to show their support. The McBride and District Hospital Auxiliary would like to suggest that a donation, big or small, would be a great way to say thank you to and honour those who work in our hospital and ambulance service. Auxiliary fund-raising supports our healthcare workers through purchases for direct patient care. We have chosen the month of May because May 9 is Healthcare Auxiliary Day in British Columbia. As well, our Strawberry Shortcake Social usually takes place at the end of May but due to uncertainties which are a result of by the Covid-19 virus, we are cancelling this important fundraiser. Donations can be made by sending a cheque to McBride and District Hospital, Box 669, McBride, BC, V0J 2E0. Cash donations can be dropped with Pat Elliot at McBride AG Foods. (Receipts will be issued for donations of \$20 and over) Watch for updates on our Facebook site. Thank you for considering our MAKE a MAY donation campaign.

Via-Rail Schedule viarail.ca Phone 1-888-942-7245
Going West - Sunday, Wednesday & Friday...2:44pm
Going East - Monday, Thursday, Saturday...1:48pm
Discounts for 1 or 3 days advance booking.

Important Phone Numbers

EMERGENCY 9-1-1 Gov't Serv. BC 250-569-3760
R.C.M.P. 250-569-2255 Village 250-569-2229
Hospital 250-569-2251 Reg'l Dist 1-800-667-1959
Health Unit 250-569-2251 RV Comm. Serv. 250-569-2266
K to 7 School .. 250-569-2721 Food Bank 250-569-3186
High School 250-569-2295 Fire Hall 250-569-3117
School District 57 Dental Office The Little McBride Paper
1-800-256-7857 250-569-3434
BC BUS, 844-564-7494 Report Forest Fires - 1-800-663-5555
Inquiry B.C.-1-800-663-7867 - For Toll Free Calling to Provincial Numbers...
Dial this Number 1st and ask operator to connect you to provincial department.

Take a Break in McBride...B.G.'s Friendliest Town!!

Advantage Insurance Services Ltd.
Rosemary L. Hruby, CMB
250-569-2264

NEW TEMPORARY HOURS

Monday to Friday
9:00 a.m. - 4:00 p.m.
Saturday
10:00 a.m. - 3:00 p.m.

250-569-7874



Fergie Robinson
Journeyman Electrician
McBride, BC
teamrobinsonelectricians.ca
fergie@teamrobinsonelectricians.ca

CLIFF'S BIKE SALES & REPAIR

905 - 3rd AVENUE

Reasonable Rates.

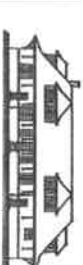
ROBSON VALLEY ESSENTIALS
250-569-2415

NEW HOURS

Mon: 9-5 Closed for lunch 12-12:30
Tues: 9-5 Wed: 9-5
Thur: 9-5 Closed for lunch 12-12:30
Fri: 9-5:30

Sat 9-5:30 Closed for lunch 12-12:30
Check Out Our Facebook Page

WHISTLE STOP GALLERY



To do our part to help prevent the spread of Coronavirus (COVID-19) and ensure the health & safety of the community and our employees, we have closed the Whistle Stop Gallery to walk in traffic until further notice. To discourage out of town visitors we have also closed the Visitor Centre. If you need to access the Gallery or Visitor Centre, please call 250-569-7825 to make an appointment. We apologize for any inconvenience.

AS A PROACTIVE MEASURE TO HELP REDUCE THE SPREAD OF

COVID-19..WE WILL BE CLOSED UNTIL FURTHER NOTICE.



Check out our Mother's Day Draw on Facebook!

Welcome Home
GIRLS & BOYS

Happy Mother's Day!

PLEASE CHECK OUR FACEBOOK PAGE FOR UPDATES.

Follow us on Facebook - [fb.me/youarewelcomehome](https://www.facebook.com/youarewelcomehome)



RE/MAX

CENTRE CITY REALTY

MIKE MOSELEY REALTOR

dl.lumiere@yahoo.ca

Buying or Selling in the Robson Valley?
Helpful, Friendly, Professional Advice.

CALL/TEXT

778-258-0064

Rich MECHANICAL AND TOWING
250-569-2470

Light & Heavy Duty Towing

BCAA Provider

Heavy Duty & Commercial Transport Mechanical

CVSE Inspection Facility

McBride AG Foods
250-569-0140

Happy Mother's Day!!!
OPEN Mon.-Sat. 9:00am-5pm
Sunday CLOSED
OPEN Mon., Wed. & Thurs. 8am-9am
for Seniors & Immune Compromised
FRESH FISH
ALWAYS CANNADIAN
ON FRIDAYS

Uncle Mark's Tasty Food



Open Weekdays!!

www.unclemarks.ca
1st Ave - Ph: 569-3003 to order!

1-877-295-0655



MONASHEE COMMUNICATIONS
accounts@monasheecomunications.ca

WIRELESS INTERNET

McBride / Dunster / Tete Jaune / Valemount

INSULATION & DRYWALL

250-569-0320

How many seconds are there in a year?

Robson Valley Septic

(250) 569-7812

"Your business is our business!"

ROBSON VALLEY IDA TELEPHARMACY

OPEN Mon.-Fri. 9-5. Sat. & Sun. Closed
www.robsonvalleyidapharmacy.com
250-569-8811
1136 - 5th Ave. inside the McBride Hospital

Avoid waiting for your prescriptions by calling them in at 250-569-8811

OR
Take advantage of our online Refill Request option on our website

www.robsonvalleyidapharmacy.com/rx-refills

Flyers are now available online only at www.guardian-ida-pharmacies.ca/en/flyer

Sure-Step Shoe Repair

FULL SERVICE
Insoles Galore - Shoe Care Products
Stretching - Resoling

Mon.-Fri 9-6 Sat. 9-5 Sun. 12-5

Ryan Vale
780-264-6568
ryanvale@yahoo.ca

Now Located in the McBride Hotel

Delivering Fuel East to McBride & Valemount



Four Rivers Co-operative

Commercial, Farm & Personal

Visit our Gas Bar in Prince George!
6749 Westgate Avenue - Tel: 250.964.2697

Prince George: Tel: 250.564.3488 TF: 866.309.2667 Fax: 250.564.3433	Valemount Cardlock: 1500 - 9th Avenue Valemount BC TF: 866.309.2667	McBride Cardlock: 2130 Zaidler Road McBride BC TF: 866.309.2667
--	--	--

Tax season extended to June 1

Linda Fry

532 Main Street, McBride
250-569-0138

9am - noon & 1pm - 4 pm Tuesdays to Friday and by appointment

Seven Sisters Farm Grass Fed Beef

Cut, wrap & frozen, by the Quarter - \$6.50/lb.

Contact Joanne Pelton - 250-553-2365



Corporation of the Village of McBride
Reminder:
Mandatory Boil Water Notice



Effective until Further Notice
View the Boil Water Advisory:
www.mcbride.ca/news



Corporation of the Village of McBride
Province of BC Property Tax Deferment Program

Tax deferment is a low interest loan program that helps qualified B.C. homeowners pay their annual property taxes on their principal residence. Starting May 1, 2020, the Province of BC's Property Tax Deferment program will launch a new online Property Tax Deferment application to make deferring property taxes easier and eliminates the need for paper forms. Homeowners will be able to apply online and opt in for annual renewal. Current program users will no longer need to renew annually if they continue to meet program requirements.

To learn more about the Property Tax Deferment Program and eligibility requirements, and to apply visit the Provincial Property Tax Deferment Website at: <https://www2.gov.bc.ca/gov/content/taxes/property-taxes/annual-property-tax/defer-taxes>
Property owners will still be required to claim their homeowner grant at the Village Office.

BUY, SELL, RENT & MISC.

For Sale-Jersey hand milk cow - 2 calve in 3 weeks. 3,000. For more information ph:250-569-7612**For Sale-2013 Fiberglass Sailboat with trailer. Fully equipped. \$5000. Phone 250-566-1017**Wanted: Sheep shears to rent or buy. Phone 250-569-4047**For Sale-Four Studded Tires On Rims (5 lug holes), from Ford F150. Four Studded Tires On Rims (6 lug holes) from Chev Uplander. Phone 250-569-3254**For Sale-40 ft. 5th wheel trailer, new wiring harness & deck, good brakes, rated 12-14,000 lbs, needs front jack. Price reduced to \$3850. Phone 250-968-4370**For Sale-Stihl and Husky chain saws, a good selection of bars and chains to get ready for firewood season. Phone Warren Ph: 250-569-7469.

Food Bank

We are prepared to continue serving the Robson Valley during this Covid 19 crisis, with measures in place to ensure social distancing. If you would like to donate non-expired, non-perishable goods there are two drop off locations: 1) McBride Post Office. 2) McBride AG Foods (items purchased in-store only at this time please. No items from outside the store during COVID-19). If you would like to make a monetary donation, there are now 2 ways to give: 1) Cheque must be made payable to: The McBride Seventh Day Adventist Church. Please indicate that the donation is for the food bank and include name, address and phone number if you wish to receive a year end charitable tax receipt. Send the donation to Food Bank c/o Julie Holland, PO Box 603, McBride BC, V0J 2E0. 2) Online Giving at www.mcbrideadventist.ca Click Online Giving Tab. Enter donation amount on Community Services - Food Bank line. Visa debit and credit cards are accepted. There are no user fees. You will be issued a confirmation receipt with details. An official tax receipt will be given at year end. The Food Bank is staffed by volunteers therefore 100% of donations go to the purchase of food, baby supplies, personal care items, cleaning supplies and rent. We are located at 852 2nd Ave. (in the basement at the left side of building). We are available by appointment, to anyone needing help by contacting Julie Holland 250-569-3186 or 250-569-7436 or Beryl Hagen 250-569-3225. And a big thank you to our faithful supporters! It's wonderful to belong to such a caring community. May God bless you as we take care of each other during this difficult time. -The McBride SDA Church Food Bank

CHURCH NEWS N' THINGS

Anglican United Church - Downtown Thrift Store on Dominion Street. CLOSED until further notice**Dorcas-Adventist Community Center is CLOSED TILL FURTHER NOTICE. We will not be accepting donations of clothing or house hold items during this time. STAY SAFE! Contact # Terri 250-569-2479-Foodbank contact number is 250-569-3186.

Please contact The Little McBride Paper with all coming events, news, trivia, comments, anything!! 250-569-3110, Fax:250-569-0220, email: contact@fps.ca, P.O. Box 441, McBride, B.C. V0J 2E0 or drop off at 455 King St. If we don't know about it, we can't inform the public about it! And check out our website www.fps.ca.
Scott & Susan (Oscar & Broom)

Take a Break in McBride...B.G.'s Friendliest Town!!



Robson Valley Quilting Supplies

While my store door is closed, if you need any sewing, quilting or handbag hardware, please call or text me at 250-569-7433 or email rlvquilt@gmail.com for orders and charities

Facebook - Robson Valley Quilting League
I have a drop box where I can place your items so you can conveniently pick up items and drop off cheques or cash.
Thank you for your continued support!
Stay Apart to Stay Together - Georgie Kenje

ING Developments Vehicles for Sale

- 2014 Suzuki S40 Motorcycle. 2800km. # 0789, \$3500.00
- 2017 Chevrolet Trax AWD, auto, 11500 Km. Lot #9595, \$13500.00
- 2018 Ford F150 Limited, 4x4, shortbox. 3.5L Turbo, 36000km, #3232, \$35500.00
- 2018 Ford F150, XLT, 4x4, crewcab. 3.5L turbo, 6.5 foot box, 30000km, Lot #2230, \$24900.00

Contact us at 250-569-0343 for information
Price indicated does not include applicable taxes
Dealer #31296

Alaina Chapman RMT

Registered Massage Therapist
Monday, Wednesday & Thursday

Ph: 250-566-1040 To book an appointment

Franks and sons Automotive Ltd.

Repairs - Tires - Windshields

975 Airport Road - 250.569.8830

UNCLE MARKS CUSTOM MEAT CUTTING

Field to Plate Service, © "Stress free animals humane harvest, custom sausage, make better meat"
\$5 bags of bones and bird suet. Mart.Roth 250-569-7805

Glass Cutting, Picture Printing, Matting and Framing

call Bill Arnold 569-3381

Double Czech Carpentry

Pavel Bendl • 250-617-0263



- Renovations, new construction
- Exterior and interior finishing
- Cabinetry, kitchen remodeling

Call or email pavel.bendl@gmail.com

THE HAIR SHOPPE

803 3rd Ave. 778-258-0343 side entrance

Gigglin' Grizzly Pub

TEMPORARILY CLOSED

We'll be back!

HORSEBOEING



Gary Schwartz
Farrier Service
250-569-3319
McBride, BC

Sorry, CLOSED TILL FURTHER NOTICE
Have a Happy Easter



(Open-M-F:6a.m.-5p.m. Sat.:9a.m.-5p.m. Sun.&Stats:Closed)

Robson Valley Pet Hostel

Grooming & Boarding

Ann Schwartz - Animal Health Technician

250-569-3319 Website with information and galleries: www.pethostel.ca

Cougar Den Cabins

250-569-7308

Daily, Weekly & Monthly Rates

1800 Samson Rd. McBride (bottom of Lucille mountain)

Hot Iron Forge & Anvil

Custom Blacksmithing, Rails, Gates, Curtain Rods, Towel Holders, Etc.
Items can be viewed at the FARM STORE

Tim Heatwole - 250-569-7612

Meraki Builders

Construction and Renovations
250 569 7885 (Mitch) 250 569 4109 (Brenden)

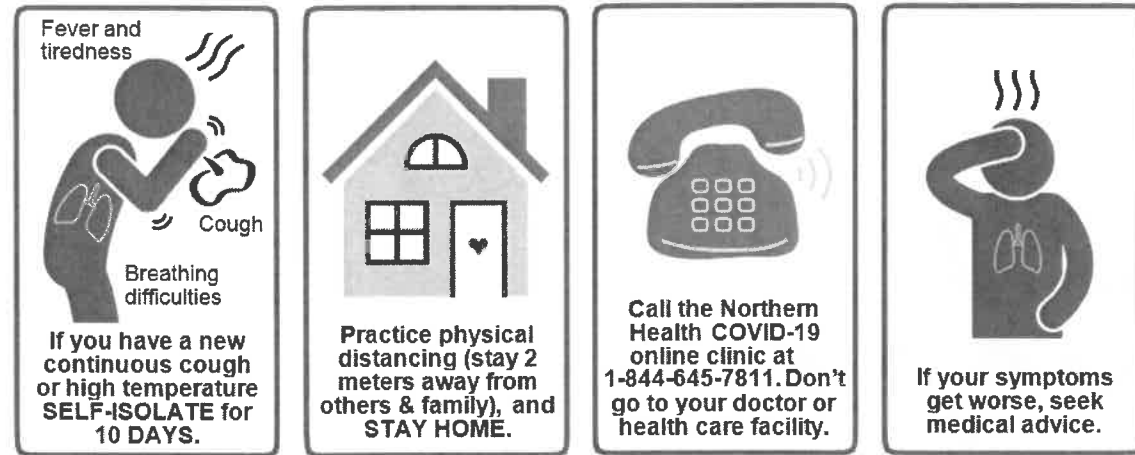
Fourth & Main Hair Studio

Open Monday's call or text
Thursday-Saturday 780-236-4222
by appointment

WHAT ARE THE SYMPTOMS AND WHAT SHOULD I DO IF I FEEL UNWELL?

- **Cough.** A new, continuous, dry cough. This means coughing a lot for more than an hour, or three or more coughing episodes in 24 hours.
- **Fever**
- **Breathing Difficulties**
- **Generalized Muscle Pain**
- **Headache**
- **Sore Throat**

Some people with the infection will have mild symptoms, or none at all, but they can still spread the virus to others – who might develop more severe symptoms.



If you are experiencing symptoms you should:

1. Call the NH COVID-19 Online Clinic at **1-844-645-7811**.
2. Don't go to your doctor's office without **phoning ahead**. If you have questions, call your family doctor or nurse practitioner.
3. **SELF-ISOLATE** for 10 days in your home, along with your family members.

HOW LONG SHOULD I SELF-ISOLATE FOR?

1. If you are returning from travel, you need to self-isolate for **14 days** (even if you don't have symptoms).
2. If you have symptoms of COVID-19, you need to stay home for **10 days**.
3. If you live with someone who has developed symptoms, you need to stay home for **10 days** from the day the first person in the home started having symptoms.
4. After 10 days (14 days after coming back from travel), if your temperature is normal and you feel better you can go back to practicing Physical Distancing.

WHAT'S THE DIFFERENCE BETWEEN SELF-ISOLATION AND PHYSICAL-DISTANCING?

- **Self-Isolation:** staying at home and avoiding situations where you could infect other people. People at high-risk of having been exposed to the virus are asked to self-isolate.
- **Physical Distancing:** staying 2 meters (6 feet) apart from others when outside the home.

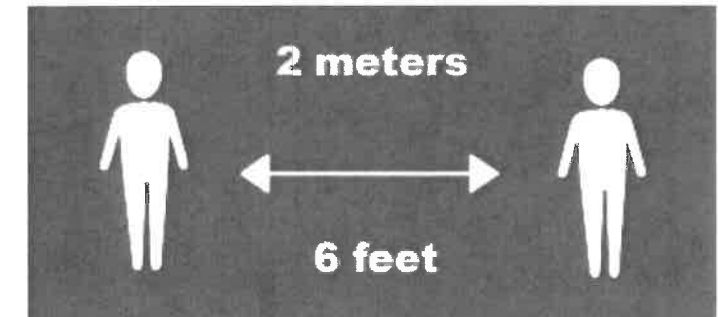
Please contact the Village of McBride at 250-569-2229 or mcbride@mcbride.ca for more information.

COVID-19 INFORMATION SHEET

Help stop the spread of germs. Protect yourself and others
HOW CAN I AVOID GETTING AND SPREADING THE VIRUS?

1. PRACTICE PHYSICAL DISTANCING

- Avoid close contact with other people. **Keep at least 2 meters (6 feet) away from them.**
- Limit trips out of your home for essential items such as groceries **to once a week.**
- **Work from home** – speak to your employer about this.
- **Avoid social activities** such as going to restaurants or other busy areas.
- **DO NOT attend events with groups of more than 50 people**
- **Avoid going on children's playdates**, such as going to a playground or park.
- **Don't have visitors to your home. This includes friends and family**
 - (other than the family members you live with).
- Don't go to your doctor's office without **phoning ahead**. If you have questions, call your family doctor or nurse practitioner. You can also call the NH COVID-19 Online Clinic at **1-844-645-7811**.



2. WASH YOUR HANDS OFTEN

- Wash your hands often with soap and water– for at least **20 seconds**.
- Always wash your hands when you get home or arrive at work.



3. USE HAND SANTIZER If soap and water are unavailable

4. USE COUGHING ETIQUETTE

- Cough or sneeze into your elbow, or into a tissue.
- Put used tissues in the garbage immediately, and then wash your hands.



5. AVOID TOUCHING YOUR FACE

- Avoid touching your face, eyes, nose, or mouth.

THANK YOU FROM THE VILLAGE OF MCBRIDE MAYOR, COUNCIL AND STAFF FOR KEEPING THE ROBSON VALLEY SAFE FROM THE SPREAD OF COVID-19

- ii. Due care and consideration must be employed so that smoke from open burning of debris does not pose a hazard at airports or on provincial highways by significantly reducing visibility.

4. Control of Fires

- a) A person who has been issued a permit under this Bylaw must ensure that the fire is continuously supervised and controlled by a person who is at least nineteen (19) years old.
- b) The person supervising the fire must have emergency equipment that is immediately available and is capable of controlling or putting out the fire to prevent danger, damage and injury to persons or property.

5. Inspection and Orders

- a) The Fire Chief or his/her designate may:
 - i. Enter at all reasonable times on any property that is subject to the requirements or regulations of this Bylaw, to ascertain whether the regulations in this Bylaw or directions made under this Bylaw are in compliance.
 - ii. Make order directing the owners or occupiers of property to bring the fire into compliance with this Bylaw;
 - iii. Prevent material not properly prepared (i.e. dried) from being added to this fire;
 - iv. Order the operator to immediately put the fire out.
- b) No person shall obstruct or prevent the Fire Chief or his or her designate from conducting an inspection under this bylaw.

6. It is incumbent on Renters to secure approval from Property Owners for recreational campfires.

Every person who violates any of the provisions of this Village of McBride Burning Bylaw 680, or who suffers or permits any act or thing to be done in contravention of this Bylaw shall be deemed to be guilty of an infraction hereof and shall be liable to the penalties imposed. Every continuing infraction shall be deemed to be a new and separate offence for each day during which the same shall continue.

Any person found guilty of an infraction on any of the provisions of the Burning Bylaw shall, be liable to a minimum fine of one hundred dollars (\$100).



Village of McBride Issues Blanket Permit for Recreation Fires for Residents Until May 14, 2020

Recreation Campfires (2ft by 2ft by 2ft) Allowed 8 am to Midnight Daily

The Ministry of Environment's fire ban restrictions are in effect until Monday June 15, 2020 in McBride and surrounding area. The ban restricts opening burning due to high smoke sensitivity therefore the Village will not be issuing any open fire burning permits at this time. The restrictions can be viewed at the link below.

<https://governmentofbc.maps.arcgis.com/apps/webappviewer/index.html?id=6d288bc667b24528a5c1e3b4c0373d07>

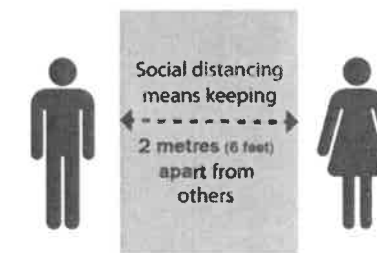
The COVID-19 Provincial Ministerial Orders require the Village to have a Bylaw Enforcement Officer in place to ensure social distancing and no mass gatherings. The Village has been relying on short term approvals from EMBC to cost recover these incremental costs to the Village.

As of April 29, 2020 the Village received approval from EMBC for a Bylaw Officer until the middle of May. Now that we have this in place the Village can confidently implement a Blanket Permit for all McBride Residents within the Village's jurisdiction to have a Backyard Recreation Campfire.

Recreation Fires Allowed Daily - April 30 to May 14, 2020 from 8 am to Midnight

RECREATION CAMPFIRE INCLUDE RESTRICTIONS REQUIRING;

1. Social Distancing and Staying Home Provincial Orders Compliance



2. Recreational Fire means the burning of wood for recreational purposes in a permanent outdoor fireplace, barbecue or fire pit not larger than 60 centimetres in diameter that is designed and constructed for such a purpose

3. Distance from Building and Facilities During Burning

a) Recreation fires must be carried out at least 4.6 metres from all property lines and at least 3.0 metres from any combustible structure.

b) The open burning of debris must be carried out at least:

- i. 4.6m from all property lines and buildings and at least 3.0m from any grass, shrub, trees or wooden fence.

INTERNATIONAL NURSES DAY

The
Goat Shed

The Farm Store
Great Specials
Every Week!



BEDDING PLANTS
&

HANGING BASKETS

Arrive Wednesday, May 6

Greenhouse Hours

Monday to Friday 8am-8pm

Saturday & Sunday 10am-4pm

"The Feed Store With Bulk Prices In A Bag"

Phone: 250-569-0425

Painting

250-569-0205 or 7731

ANOTHER LITTLE THINKER...

As a scarecrow,
people say I'm outstanding in my field.
But hay, it's in my jeans.

**FOREVER PRINTING
& SIGNS**

HOME of THE LITTLE McBRIDE PAPER

- Signs • Magnetics • Banners • Sandwich Boards
- Vehicle Decals • Window Decals
- Business Cards • Memorial Cards • Posters • Binding
- Address Labels • Full Color Laser Photo Copies
- Invitations • Brochures • Trophies • Engraving • T-shirts

for more information please contact

Scott or Susan at 250-569-8110,

fax: 250-569-0220, email: contact@fpas.ca

www.fpas.ca

Take a Break in McBride...B.G.s Friendliest Town!

S R E K R O W B N Y S N E G B
T N E M E G A N A M O E C N U
X I O C T H O N I I C T N I N
A N A I T R O R C H T S I A F E R M
T R I R T O O P U K S E F C R E O
E W I G U A B P S S T U O T N
E B E N H I C T P R Y D L S I
S Q C L R T N I D D N S G L I N O
G I Q T F F E I D D N S G L I N O
L A N O I T F A N R E T N I I R
U O U T N V H M G T M Q N M I
C Y A M S D I S E A L A L G Z A G
D P H Y S I C A L A R Y E R J P
A N N I V E R S A R Y
E D I V O R P F R O N T V L F

ADMINISTERING	EDUCATE	MAY	PHYSICAL
ANNIVERSARY	FLORENCE	MEDICATION	PROVIDE
BIRTH	FRONT	MONITORING	SOCIETY
CARE	INTERNATIONAL	NIGHTINGALE	SUPPORT
CONTRIBUTION	LINE	NURSES	TWELFTH
COUNCIL	MANAGEMENT	PATIENTS	WORKERS
DISEASE			