

**McBRIDE & DISTRICT**  
**PUBLIC LIBRARY**  
241 Dominion Street McBride, BC V0J 2E0  
Phone: 250-569-2411

### Hiring Library Assistant

Part-time

For more info, check out  
mcbride.bc.libraries.coop

or call 250-569-2411

Deadline for applications: December 4th at 4pm  
library@mcbridebc.org www.mcbride.bclibrary.ca

## Need a hand getting the house ready for Christmas?

The United Way's Better at Home Program can help get things ship-shape. Over 65 and interested - give us a call at RVSS 250-569-2266



Better  
at Home



ROBSON VALLEY  
SUPPORT SOCIETY

Better at Home is a project by the Government of British Columbia

## Pre-Christmas SHOPPORTUNITY!

TOCARA



simply comfortable

Staped  
After

PICTURE  
SELECTIONS

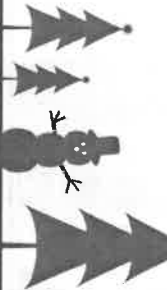
MÖDERE  
Luv Uhm

Tuesday, December 5th  
6:30 pm to 8:30 pm

Downstairs at the  
Gigglin' Grizzly Pub

600 1st Ave.  
McBride

GOLDEN  
PALATTE LTD.



## Just In Time For Christmas!

### ROBSON VALLEY PHARMACY



OPEN Mon.-Fri. 9-5, Sat. 9-3, Sun. Closed  
www.robsonvalleyidapharmacy.com

250-569-8811

1136 - 5th Ave. Inside the McBride Hospital

Shop local at  
Robson Valley IDA

For every \$50 you  
spend in store through  
Dec. 1-23 you are  
entered into a surprise  
Christmas hamper.

Draw at 4:00PM on  
December 23

## ROBSON VALLEY ESSENTIALS

250-569-2415 Mon.-Thurs. 9-5 Fri. & Sat. 9-5:30

Come check our Great Selection of  
Christmas Cards, Boxed Chocolates,  
Stocking Stuffers, and more...

\*\*\*\*\*Kerig K Cup Destination .60¢ & .89 each\*\*\*\*\*

Check Out Our Facebook Page



241 Dominion Street McBride, BC V0J 2E0

Phone: 250-569-2411

### REGULAR HOURS

Tuesdays: 10-5pm, 7-9pm  
Wednesdays and Thursdays: 10-5pm  
Fridays: 2-9pm Saturday: 2-5pm

library@mcbridebc.org www.mcbride.bclibrary.ca

## FREE The little FREE

# McBride



## Paper



Serving Bc's Friendliest Town and Area since 1996!!!

For the week of *Wednesday, November 29th, 2017*

### SENIOR'S CHRISTMAS DINNER

Scotiabank is once again doing a raffle to help supply funding for a Christmas Dinner for the Seniors of the Valley. The Raffle Draw will take place at the Christmas Dinner on December 6th at the Elks Hall. Dinner is at 12 noon. Get your raffle tickets from the Bank or from OAPD members Theima, Flo, Pnyllis, Sandy, Dawna Val or Dorothy. Thank you for your support.

-Signed Scotiabank and Valley Seniors.

### McBride and Area Active Living Guide

The McBride Healthy Communities Committee is a partnership between the Village of McBride and the McBride and District Hospital. This committee was established in 2014 through a grant from Northern Health. The purpose of the committee is to work collaboratively with community residents and stakeholders, to create and live in a community that fosters health and wellness. With that in mind, the McBride Healthy Communities Committee is planning on developing a 'McBride and Area Active Living Guide'. The purpose of the guide will be to promote, in one convenient publication, the many activities, events and groups that make McBride and area a healthy place to live. The intent is to produce a Fall and Winter Guide and a Spring and Summer Guide. The publications will include dates and venues for ongoing community events, contact information for the many groups that support healthy living and activities and will provide residents and visitors with handy information regarding things to do while in McBride. The Fall and Winter Guide will include events and activities that are scheduled to occur in November through April. Although the first printing may be late November or early December, we still want to list your events from that time period. There are so many active groups in McBride and area and we want to help everyone to promote the great work that is done by all. The committee will gather relevant information over the next few weeks. We can only make this a success with your help. If you organize, or are involved in any group that promotes healthy living in McBride and area, then please send an e-mail to Rick Thompson at mcbride.active.living@gmail.com or call Rick Thompson at 250-569-7620 with your group information or to schedule a discussion. Thanks in advance for helping with this initiative. McBride Healthy Communities Committee.

### COMING EVENTS

**Wednesday, November 29th** - 1:30 pm, Robson Valley Support Society would like to invite you to our annual awareness day walk to commemorate the National Day of Remembrance and Action on Violence Against Women (Dec. 6th). Please meet outside of the Beaverview Lodge at 1:30pm November 29th, to attend our walk from the Lodge to the RVSS office at 942 3rd Ave., for an open house and refreshments.  
**Last Legion Bingo** November 29, 2017. Will start again the first Wednesday in April 2018.

**Robson Valley Acupuncture** is hosting a come-and-go Open House November 30 from 3 - 7pm. Everyone welcome! Come learn about acupuncture and ask any questions you have. Try out some Ear Acupressure, enjoy refreshments and enter the draw for a free acupuncture treatment! See you there! -Chelsea Roth (250)569-7683  
www.robsonvalleyacupuncture.com.

**McBride and District Hospital Auxiliary Christmas Extravaganza**, December 2nd at the E-Free Church, McBride. 7pm-9:30pm. Silent Auction! Bake Table! Crafts! Christmas Hamper Raffle! Famous Cake Walk! and more!! Please support our biggest fundraiser of the year! All of the proceeds go back in our hospital to buy extras for client care. See you there!

**The McBride Figure Skating Club** presents...our annual Christmas Skating Show on Wednesday, December 6, starting at 6pm in the Robson Valley Recreation Centre. Come on out and see our Canstankers, Jr. Stars and Star Skaters. Admission by Food Bank donation. Everyone Welcome!  
**Coming Up December 7, 2017:** McBride E-Free Church Annual Ladies Christmas Tea. Doors open at 6:00p.m., Refreshments and Door Prizes at 6:30p.m., Program at 7:30p.m. Come out and enjoy an evening of Good Food, Christmas Songs, and Celebration. All Ladies Welcome.

**"Holiday Songs That Don't Suck Too Bad"** Chili & Music Fundraiser. Live music with Samson's Delilah Trio featuring Scott Duncan on fiddle. Chili, bun, fixings and hot drinks. Desserts by donation! Wear your favorite "ugly" Christmas sweater for a free dessert. Friday, December 8th @ Dunster Schoolhouse. Doors @ 6:00 pm. \$20/Adult, 6-13 years \$10. Under 6 Free. Babysitting will be available! Proceeds going to RVMF and Dominica Hurricane Relief.

The Robson Valley Fiddlesticks & String Ensemble will be presenting a Christmas Concert Sunday, DECEMBER 10, at 4:30 pm in the E-Free Church with refreshments to follow.

**Sunday, December 10.** Come join Mountain Chapel at our annual Christmas Concert. 7pm at the church, 3rd and Main Street. Everyone welcome.

Greyhound Schedule (The Farm Store) (Closed Sun.) 250-569-0425  
Depart to East - 2:45am Daily (Valemount, Jasper, Edmonton)  
Depart to West - 7:40am Daily (Prince George)

Please contact **The Little McBride Paper** with all coming events, news, trivia, comments, anything!! 250-569-3110, Fax:250-569-0220, email:sgjines3@telus.net, P.O. Box 441, McBride, B.C. V0J 2E0 or drop off at 455 King St. If we don't know about it, we can't inform the public about it! Scott & Susan Glines (Oscar & Broom)  
All articles and ads are not the expressed opinion of this paper or its owners.

Take a Break in McBride...B.G.'s Friendliest Town!!

**ROBSON VALLEY**  
**PHYSIOTHERAPY**  
Phone 250-569-0053

Serving McBride and Valemount

Dog Bones & Bird Suet \$5.00/Bag.

Now carrying Smoked Bones and Smoked Liver  
at Uncle Mark's Meat Shop

### Meraki Builders

### Construction and Renovations

250 569 7885 (Mitch) 250 569 4109 (Brenden)

**Alaina Chapman RMT**

Registered Massage Therapist  
Monday, Wednesday & Thursday

Ph: 250-566-1040 To book an appointment

**THE RUSTY IRON**  
Salon & Boutique

Tues. 10-6 Wed. 12-6 Thurs. 10-6 Fri. 10-5  
417 Main Street 250-569-4203  
Saturday by Special Appointment Only  
Call or Text for appointment

Stock up on BIRD Suet for the winter!!

\$5.00 Bags at Uncle Mark's Meat Shop

on 1st Ave, McBride

### MCKALE HOUSE

421 Main St. 569-7176

Christmas Ornaments and Snow Globes!!

Over-sized books 50% off

Coffee/Tea/Cookies

Wed-Fri 10-5, Sat 10-2

**Franke and Sons Automotive Ltd.**

Repairs - Tires - Windshields

975 Airport Road - 250.569.8830

### UNCLE MARK'S CUSTOM MEAT CUTTING

Field to Plate Service "Stress free animals for domestic and Game make better meat"  
Mark Roth 250-569-7805 "Serving the Robson Valley"

## HOUSE CLEANING

available to give you  
time for better things.

**Diana 867-876-0402**

### REALLY NICE STONEMWORK!!!

styles Call Adam Roth Stonemasonry  
250-569-6809 adamrothventures@gmail.com

"Rocking the Robson Valley"

Order & pre-pay by  
phone for pickup in  
McBride at Sears  
**Infinity**  
Valemount

1 855 566 4225  
Vitamins,  
Specialty Foods & More  
office@reius.net

**Cougar Den Cabins**  
250-569-7308

Daily, Weekly & Monthly Rates

1800 samson rd. mcbride (bottom of lucille mountain)

Glass Cutting, Picture Printing,

Matting and Framing

call Bill Arnold 569-3381

**R3 ACRES**, Farm raised beef, naturally.

Grain fed beef now available year round.

Visit www.r3acres.com for a full list of packages.

Call: 250-569-7203 Email: beef@r3acres.com



**THE HAIR SHOPPE**  
803 3rd Ave.  
side entrance  
778-258-0343

### HORSESHOEING



Gary Schwartz  
Farrier Service

250-569-3319

McBride, BC

Start getting into the Spirit of the Season!

We have Chocolate Mint Mocha

and Peppermint Latte



250-569-0133

M-F:6am-5pm. Sat:9am-5pm. Sun. & State-Closed



**Robson Valley**

Pet Hostel

Grooming & Boarding

Ann Schwartz - Animal Health Technician

250-569-3319 Website with information and galleries:  
www.pethostel.ca

## PAINTING

Call Phil @ 250-569-0205

# Pick boyz

## MECHANICAL AND TOWING

250-569-2470

Light & Heavy Duty Towing

BCAA Provider


Heavy Duty & Commercial Transport Mechanical

CVSE Inspection Facility

Advantage Insurance Services Ltd.

Rosemary L. Hruby, CAIB  
250-569-2264

Enjoy the EXTRA VAGANZA  
Saturday, December 2nd.  
Support the great cause.



HORSESHOE LAKE VENTURES  
100 Mountain View Rd.  
McBride, B.C. V0J 2E0  
250-569-0075

We are the local WeldCor cylinder depot. Check out our selection of cylinders and welding supplies.  
-Feed and Farm Supplies -Dog and Cat Food  
-Full Hydraulic Hose and Fitting Supply  
-Agricultural Parts and Repair  
-Automotive Parts and Accessories




COCA COLA  
8x355ml ~ 2 for ~ **\$7.00**  
HERSHEY REGULAR BARS  
39-58 g  
Buy 1 get 1 for ~ **\$1.00**  
2x the Points  
LAY'S  
170-180g ~ 2 for ~ **\$6.00**  
3x the Points

FOREVER PRINTING & SIGNS

- Signs •Magnetics •Banners •Sandwich Boards
- Vehicle Decals •Window Decals
- Binding •Posters •Business Cards •Address Labels
- Full Color Laser Photo Copies •Invitations
- Brochures •Trophies •Engraving •T-shirts & more

22 years experience  
for more information please contact  
Scott or Susan at 250-569-3110,  
fax: 250-569-0220, email: sgliness3@telus.net



SNOW REMOVAL  
D & T INDUSTRIES  
\*BLADE \*BUCKET \*BLOWER \*DUMP BOX TRAILER \*  
SANDING NOW AVAILABLE

WE CAN'T STOP IT FROM COMING, BUT WE CAN KEEP IT OUT OF YOUR WAY!  
DARVIN 250-569-7758 or TOWN 7050



250-569-2666  
After Hours call  
250-569-2726  
or 250-569-7016  
AUTO SERVICES  
1021 SE Frontage Road

We will be CLOSED on Saturday, December 2nd  
Lots of WINTER TIRES in stock  
Book a time for your  
VEHICLE WINTER CHECK UP  
Open MONDAY to FRIDAY 8:00am - 5:00pm  
SATURDAY 9:00am - 12:00pm

Antiques & Giftware  
WELCOME HOME  
20% OFF PURSES  
SOUP, & SANDWICHES SERVED DAILY  
TO STAY OR TAKE-OUT  
OPEN MONDAY-SATURDAY 10:00AM-5:00PM 250-569-0215

## TALENT SHOW

The Talent Show Event was a huge success full of amazing talents!! Thank you to all the volunteers, who are going on the Live Different trip. Thank you to Mr. Shaw. Thank you to all the talented and braves performers who made the show epic!! Thank you to all the community who filled the theatre with your presence and filled the donation boxes with your support. This event raised \$1218.01 for the Live Different Trip Spring 2018.

## COMMUNITY CHRISTMAS

Community Christmas Day Dinner....Please join us on December 25 at 4p.m. in the Evangelical Free Church for a FREE Turkey Dinner. No reservations necessary. Volunteer help and cooks needed (call Betsy 250-569-3386). -Sponsored by Community members and Churches of McBride.

## BIRTHDAY WISHES NOVEMBER 29-DECEMBER 5

Josanna Rollinson, Peter Hulka, Madelyn Shaw, Michelle Desormeau, Nicole Molendyk, Sarah Harstad, Susan Glines, Dawn Hickerty, Jediah Rich, Scott Monroe, James Gredling, Karl Wright, and to any we missed, Happy Birthday!

## LIBRARY NEWS

Monthly Book Discussion meets: Thursday, December 21 at 1:30pm. This month's topic is "Time in the Title". All welcome to bring a book to share over coffee & tea. Drop by the library to pick one up.

LAST Ready, Set, Learn of 2017. Tuesday, December 5th at 10:15am at the LIBRARY (241 Dominion Street - not the Elementary School). This program for preschoolers and their caregivers is hosted by McBride Centennial School and the library.

Christmas Carols on the Hap with Doreen Beck. Saturday, December 16th at 2:30pm at the Library.

## BUY, SELL, RENT & MISG.

For Sale: 1992 Ford F150, 5 spd stand, 4x4, 5 liter. Motor, rearend & transfer case good condition. Needs bearing clutch (comes with part). 5 brand new winter tires BF Richmond Goodrich all terrain, snow grip. Asking \$1400. Phone 250-968-4370\*\*For Sale- 12x52 Mobile Home. \$8000 obo. Phone 780-609-0069\*\*Wanted: Elliptical/cross trainer machine for a reasonable price. Phone Wanda at 250-569-0320 Wed. - Sat.\*\*For Sale-14x20 Cabin with bedroom, unfinished washroom, entry on 1 side, kitchenette on other side. \$11,000. Ph:250-569-4048\*\*3 Western saddles including high end Wade from Cactus Saddlery, Remington Pump 30-06 carbine, synthetic stock, trigger fix kit, Limb Saver recoil pad, excellent condition, 575.00. Leopold Delta Pro red dot sight, the new model, as new, 375.00. Phone 250-569-3423 or 250-569-7575\*\*For Rent-Large 4 bedroom house on 3 lots for rent. \$900 plus utilities. Large kitchen and balcony! Ph:403-952-8224\*\*For Sale-CCM Exercise Bike, 27" Portable Organ, Bag of Antique Knitting & Craft Books (10/\$5.00). Phone 250-569-2234\*\*Wanted-Optically Damaged Binoculars. Cheap. Call Andrew Ph:250-569-7336\*\*For Sale-Whirlpool 24" Electric Built-In Oven. \$1000, o.b.o. Ph:250-569-2420 or 560-7470\*\*For Sale-4 Winter Tires with studs on rims for 6 Bolt GMC. \$200.00. Phone 250-569-7353\*\*For Sale-Student Desk-4 drawer 16x36 \$30.00. Rowing Exercise Machine \$20.00, Upholstered Recliner \$100, 18" drafting lamp \$25.00 Ph:250-569-2234\*\*For Sale-4 Studded Hercules X-Treme Avalanche Winter Tires. 205/65R16 M&S rated. Bought new last winter, less than 1000km on them. \$350. Phone: 250-569-2772\*\*For Sale-Brand new Mastercraft 10" Tablesaw, 15A. \$150.00. Phone 250-566-1517\*\*Hay For Sale \$45, 4x5, 807lb, mixed grass, twine, no rain, shed, loading available, - Aaron Ford 250-569-7817\*\*For Sale-25 mixed Hay plus Clover 1100 lbs - 5x5 - \$60 each. Phone 250-569-7733\*\*For Sale-2008 Honda Civic DXG, city driven, original owner, auto start, Sirius, winter/summer tires, 170k kms, \$6900 OBO. 778-214-3971\*\*For sale-Square Hay Bales. \$3.00 each. Ph: 250-553-6890\*\*For Sale-5x5 Hay Bales, \$55.00 Bale. Time Heatwole Ph:250-569-0012\*\*For Sale-Stihl and Husky chain saws, a good selection of bars and chains to get ready for firewood season. Phone Warren Ph: 250-569-7469.

## CHURCH NEWS N' THINGS

Anglican United Church - Downtown Thrift Store on Dominion Street. Clothes and Household Goods. Open: Tues. 1:00-3:00 & Fri. 1:00-3:00•Dorcas open Tues. 1-3. Ph: 250-569-2479 Terri, 250-569-2527 Esther•Foodbank contact number is 569-3186•Seventh-day Adventist Church-Meet Saturdays at 9:30 & 11am. and Wednesdays at 7p.m. Phone: Ph: 569-3370•Mennonite Church-Meet Sundays 11am and 7:30pm & Wednesdays at 7:45pm Ph: 569-7297•Mountain Chapel (PAOC)-Sunday School & Adult Classes-10am, Services-11:10am. Ph:569-3350•Anglican United Church-441 Dominion Street. 1st and 2nd Sundays in the month - Worship 9:00 am, 3rd and 4th Sundays Worship 11:30 am. Youth Group Wednesdays 3:00 to 4:30 pm. Contact Student Minister Kim McNaughton, phone 250-968-4467 or leave message at 250-569-3206. •Evangelical Free Church-Worship Gathering at 10:30am. Ph:569-2378-St. Patrick's Catholic Church-Meets Sundays at 11:00am. Ph:569-2606. Call to Confirm.

Via-Rail Schedule viarail.ca Phone 1-888-842-7245  
Going West - Sunday, Wednesday & Friday...2:44pm  
Going East - Monday, Thursday, Saturday...1:48pm  
Discounts for 1 or 3 days advance booking.

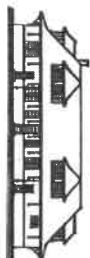
## Important Phone Numbers

EMERGENCY ..... 9-1-1 Gov't Serv. BC. 250-569-3760  
R.C.M.P. .... 250-569-2255 Village..... 250-569-2229  
Hospital ..... 250-569-2251 Reg'1 Dist' ..... 1-800-667-1959  
Health Unit ..... 250-569-2251 RV Support Soc. 250-569-2266  
K to 7 School .. 250-569-2721 Food Bank ..... 250-569-3186  
High School ..... 250-569-2295 Fire Hall ..... 250-569-3117  
School District 57 Denial Office The Little McBride Paper  
1-800-256-7857 250-569-3434 250-569-3110  
Report Forest Fires - 1-800-663-5555

Inquiry B.C.-1-800-663-7867 - For Toll Free Calling to Provincial Numbers ...  
Dial this Number 1st and ask operator to connect you to provincial department.  
Take a Break in McBride...B.G.'s Friendliest Town!!

# WHISTLE STOP GALLERY

250-569-8891



Friends and family visiting?  
Bring them down to the gallery and share the stories of the Robson Valley told by the over 90 artists and crafters whose work is on display.

OPEN DAILY IN THE TRAIN STATION

Delivering Fuel  
East to McBride & Valemount



Four Rivers  
Co-operative

Commercial, Farm & Personal

Our equity allocation based on members' 2016 purchases totalled over \$6 million being returned to members in equity and cash back

Prince George:	Valemount Cardlock:	McBride Cardlock:
Tel: 250.564.3488	1500 - 9th Avenue	2130 Zeidler Road
TF: 866.309.2667	Valemount BC	McBride BC
Fax: 250.564.3433	TF: 866.309.2667	TF: 866.309.2667

## Robson Valley Acupuncture

Open House! November 30, 3-7pm

At the Old Forestry building (600 Frontage Rd)

Everyone Welcome! Come learn about acupuncture. Ask questions. Try ear acupressure! Food & Drink! Door Prizes!

Chelsea Roth R.Ac.  
robsonvalleyacupuncture.com  
250-569-7638



Robson Valley Quilting Supplies  
Featuring Wide Batting and Backing fabrics  
Assorted 45" fabrics and Batiks  
Large assortment of cotton thread  
Quilt Patterns and books

Call or text Georgie at 250-569-7433  
or email valquig@ymail.com

## DRYWALL SERVICES

250-569-0320

## McBride AG Foods


250-569-0140

## FRESH FRIDAY!!!

- Steelhead • Cod
- Atlantic Salmon

OPEN Mon.-Thurs. 6:30am-6pm, Fri. 6:30am-7pm,  
Sat. 6:30am-6pm, Sun. 9am-5pm

What has eyes but cannot see?  
A potato!



Robson Valley Septic  
(250) 569-7812  
Proudly serving the Robson Valley Since October 2012!  
For emergencies call 250-569-7706  
"Your business is our business!"  
NOW CLOSED FOR THE SEASON.  
Thanks for your business!

## The Farm Store



Great Specials Every Week!  
Great In-store Christmas Specials!!  
~This week no tax on giftware~  
"The Feed Store With Bulk Prices In A Bag"  
Open Tues. to Fri. 10am to 5pm Sat. till 3pm Closed Mondays  
Phone: 250-569-0425

# SHOPS ON MAIN

246 Main Street (McBride Trading Co.)

Open Thursdays and Fridays from 10-2

It's the 8th and 7th day of Christmas!

Stop in! It's a full house!!

Lots of Christmas ideas and treasures!

Come out and Show your love for local!



COMMUNITY ANNOUNCEMENTS

To celebrate the season, a Community Christmas Tree is now up in the Library at 241 Dominion Street. The tree will showcase a collection of community ornaments that we will keep from year to year. We are hoping you can donate an ornament to the Library/Museum collection to commemorate something in your own family (births, graduation, a new business, or a passing). When you bring in your ornament we will affix a tag to it that will tell its story and it will become part of the collection that is displayed each Christmas. This natural tree is the centerpiece of the Library's festivities. Take your place in the growing record of community celebration. Contact the library at 569-2411 for more info.

THANK YOU

Big thanks to all of the wonderful elves who helped Santa visit McBride last Friday, including Advantage Insurance, McBride AG Foods, Centerfire Holdings, Derrick Shaw and the Live Different Group, the Elks & Royal Purple, McBride Chamber of Commerce, McBride Volunteer Fire Department, and the RCMP! Thanks to all elves for your generous holiday spirit and good cheer!

McBride Elks and Royal Purple

X-Mas Hampers - We need your help! Each year with the help of the community and their donations, we supply approx. 20-25 families and individuals in need with a hamper and some small Christmas presents. This year at the Senior's Christmas Dinner (December 6th) we will have a Toy Drop Box and a donation jar. It would be greatly appreciated if you have a new or gently used toy you would like to donate. All cash donations will go towards providing families in need with enough food for a nice Christmas dinner. If you know of a family or individual(s) in need, please call Dawna Hickerty at 250-569-3210 by December 10th.

COMMUNITY ANNOUNCEMENTS

Improving the look of your business! The Village of McBride is looking to gauge interest in the Business Facade Improvement Program for 2018. If you have a home-based business and are interested in support for a way-finding sign in your yard you may qualify for up to \$500! If you run a store-front business in McBride and would like to make facade improvements to your building you may qualify for up to \$5000! Call Karen at 250-569-2229 or email edo@mcbride.ca to let me know if you are interested for 2018.

PHYSIOTHERAPY AT THE GYM: Northern Health,



The McBride Community Forest Corporation (MCFC) is establishing a Select List of prequalified Contractors and Suppliers specializing in all service areas (ie: Logging, Road Construction, Grading, Road Maintenance and Deactivation, Tree Planting, Regen Surveys, Brushing), who may be invited to participate in subsequent direct invitation or select invitation solicitations on upcoming contracts and/or projects. Only prequalified contractors will be invited to participate on these contract solicitations.

The purpose of this pre-qualification is to establish a Select List of eligible contractors who are most suitable and available to compete, at a later date, on the described project or activities. The Select List is being established for use on more than one contract competition, so the MCFC reserves the right to select contractors to compete on a rotational basis.

New contractors may be added to the Select List at any time throughout the year and will be evaluated in the same manner as contractors already on the list. The MCFC does not guarantee evaluation and resulting short-listing of contractors wishing to compete on issued tenders.

Submission of a response does not guarantee inclusion on a resulting select list of prequalified contractors. The MCFC reserves the right to limit the number of prequalified contractors invited to compete on a subsequent contract. Contractors submitting responses will receive fair and uniform treatment and submissions will be given due consideration.

Contractors interested in being evaluated for inclusion on the Select List are invited to submit a response with the Desirable Criteria:

- 1. Resume containing education, relevant employment history, skills, designations and references, show that Locally based, Demonstrate/outline Service Area Expertise
- 2. Hourly fee rate(s)
- 3. Limited Liability Insurance (with Forest Fire Endorsement of \$5,000,000 and MCFC as additional insured), Worksafe BC, SAFE Certified (or demonstrate that can be obtained if needed).

Please note that this advertisement and the information provided is for viewing purposes only and is not an Official Invitation to Tender. Submissions for this process will be accepted up to Friday, December 15, 2017 at 4pm local time. Paper format, fax or email submissions are acceptable.

For any questions on the advertisement contact:

Eugene (Gene) P. Runtz, General Manager, 250-569-0262/7644 – Email: gm@mcbridecommunityforest.com

COMMUNITY SERVICES

McBride Community Services - Flu Season is coming upon us. December and into the New Year will be by appointments which can be made at 250-569-2026. You may be eligible for FREE Influenza Immunization.. Influenza vaccine is recommended for everybody greater than 6 months of age. In BC, the influenza vaccine is provided free to the following of people: •People 65 years and older and their caregivers/household contacts. •People of any age in residential care facilities. •Children and adults with chronic health conditions and their household contacts. •Children & adolescents (6 months to 18 years) with conditions treated for long periods of time with Acetylsalicylic Acid (ASA) and their household contacts. •Children & Adults who are morbidly obese (adult BMI>40; child BMI assessed as >95th percentile adjusted for age and sex. •Aboriginal people (on and off reserve). •All healthy children 6-59 months of age. •Household contacts and caregivers of infants and children 0-59 months of age. •Pregnant women at any stage of pregnancy during the influenza season and their household contacts. •Inmates or provincial correctional institutions. •People who work with live poultry. •Health care and other care providers in facilities and community settings who are capable of transmitting influenza disease to those at high risk of influenza complications. •Visitors to health care facilities and other patient care locations. •Individuals who provide care or service in potential outbreak settings housing high risk persons (e.g., crew on ships). •People who provide essential community services (first responders, corrections officers). If you do not meet any of the criteria for publicly funded vaccine, the vaccine can be purchased through some community vaccine providers such as physicians and pharmacists. For more information visit: [http://www.northernhealth.ca/YourHealth/Public\\_Health/InfluenzaInformation.aspx](http://www.northernhealth.ca/YourHealth/Public_Health/InfluenzaInformation.aspx) <http://www.bccdc.ca/imm-vac/VaccinesBC/Influenza/default.htm> [www.immunizebc.ca](http://www.immunizebc.ca)

AUTO	ISSUE
AWARENESS	LIVES
CONTROL	MILLION
DECEMBER	MOURNING
DISEASE	OBSERVE
EACH	PANDEMIC
EDUCATION	PREVENTION
EPIDEMIC	PUBLIC
FIRST	RAISE
HEALTH	RECORDED
HISTORY	TWO
IMMUNE	YEAR
INFECTION	

WORLD AIDS DAY



Healthier Communities and Robson Valley Physiotherapy have launched a FREE program. For anyone with a disability, joint replacement, arthritis, and other physical conditions. Open to those who do not have extended medical coverage. Sessions are Thursdays at the Fit Pit, 9:00 to 11:00 am, and at the Valermount Rec Centre on Wednesdays from 9:00 to 11:00 am. Please call Michelle Read at 250-569-0053 for more details and to see if you qualify, or ask your doctor about the program.

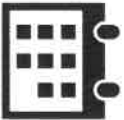

FUNDRAISER

Firewood Fundraiser - Support the McBride Secondary School Basketball Teams. \$150 per pickup load. Dry Hemlock. Delivery included. Stacking negotiable. Call Jody Keim 250-569-7764.

H T L A E H E Y Q V N R X X  
I E S A E S I D E W Y I V C E  
M I L L I O N S S K S M Y K Y  
L M W A S T F S T S E A C H W  
L X R N S O E N W O U E I G A  
X C V O U N C O N T R O L R Y  
P R E V E N T I O N E Y B Z L  
K A E R N O I T M R P G U F J  
A H A B U B O A E E I N P K B  
O W T J M S N C Z K D I G T O  
A P C L M E O U O M E N S J O  
G P P K I R C D P E M R A E Y  
K R W K D V X E R L I U E P K  
F G T E T E E Z D F C O K Y K  
L A D L F O L S G T C M O U V

Take a Break in McBride...B.G.s Friendliest Town!?

Robson Valley Community Calendar - December 2017

Sunday	Monday	Tuesday	Wednesday	Thursday	Friday	Saturday
<div>Visit the calendar online: <a href="http://visitmcbride.ca/calendar">visitmcbride.ca/calendar</a> To have your event listed email: <a href="mailto:events@visitmcbride.ca">events@visitmcbride.ca</a> Happy Holidays &amp; Season's Greetings from your McBride &amp; District Chamber of Commerce volunteers!  This month's sponsor: <b>Robson Valley IDA Pharmacy</b></div> <div></div>				Josh's Place will be taking a break for December. Back January 4th!		
<div> Full Moon</div>	3	4	5	6	7	8
	Dunster Fine Arts School Society Monthly Meeting 10am-12pm	LAST Ready, Set, Learn @ Library 10:15am Dorcas 1-3pm Teen Rec Space 3-4:30pm Gymnastics 4pm @ Elementary School	Dunster Play Group @ Dunster Schoolhouse 10am-12pm <b>Seniors' Christmas Dinner @ the Elks Hall 12pm</b> Yoga @ Firehall 4:45 pm <b>McBride Figure Skating Club Christmas Skate 6pm</b>	Strong Start @ School 8:45am Yoga @ Firehall 9:00 am Physiotherapy @ the Gym 9:00am Fibre Arts Meet @ Library 10am  Community Basketball 6-9pm	McBride Parent/Child Play Group @ EFree 10-12pm Open Gate Garden Meeting 10am in the Annex  Old Time Music Gathering @ Dunster Schoolhouse 7-10pm	Spanish Club @ Library 3pm  <b>McBride &amp; District Hospital Auxiliary Xmas Extravaganza @ EFree 7-8:30pm</b>
10	RV Strings & Fiddlesticks Christmas Concert @ EFree 4:30pm  Christmas Concert @ Mountain Chapel 7pm	11 14th Annual Canadian Country Christmas Concert 7pm @ Roundhouse Theater	12 Dorcas 1-3pm Gymnastics 4pm @ Elementary School  Emmet Otter's Jug Band Xmas McBride Centennial 6:30pm Village Council Meeting 7pm Music Jam @ Annex 7pm	13 Soup & Bun @ Beaverview 12-1pm  Emmet Otter's Jug Band Xmas McBride Centennial 1pm Figure Skating Yoga @ Firehall 4:45 pm Pickleball @ Highschool 7-9pm	14 Strong Start @ School 8:45am Yoga @ Firehall 9:00 am Physiotherapy @ the Gym 9:00am Fibre Arts Meet @ Library 10am Xmas Pirates of the Bermuda Triangle: Junior Drama @ 5:30pm RV Junior Academy Concert 7pm Community Basketball 6-9pm Figure Skating	15 McBride Parent/Child Play Group @ EFree 10-12pm  Christmas Music on the Harp Doreen Beck @ Library 2:30pm
17	Quilt Guild Christmas Party 2pm	18 Dunster Community Christmas Concert @ Dunster Schoolhouse 11-1pm Seniors' Luncheon & Show 7pm Community Concert	19 Christmas Storytime @ Library 10:30am Christmas Lego with Tim @ Library 1pm Dorcas 1-3pm Teen Rec Space 3-4:30pm Music Jam @ Annex 7pm	20 Dunster Play Group @ Dunster Schoolhouse 10am-12pm Kids' Christmas Craftnoon @ Library 1-3pm	21 Physiotherapy @ the Gym 9:00am Fibre Arts Meet @ Library 10am Monthly Book Discussion 1:30pm  Library closes early Winter Solstice	22 Christmas Music Program @ SDA Church 7pm
24	Christmas Eve	25 New Moon  Community Christmas Dinner Free! @ the E-Free 4pm No reservations necessary	26 Boxing Day  Village Office is closed Library is closed	27 Pickleball 7-9pm - Highschool	28 Christmas @ SDA Church 7pm	29
31	Happy New Year!	25 Community Christmas Dinner Free! @ the E-Free 4pm No reservations necessary	26 Boxing Day  Village Office is closed Library is closed	27	28	30
<b>More information</b>		<b>General contact information</b>				
<b>Gymnastics on Tuesdays @ 4pm</b> McBride Elementary School Contact Jenny Byford 250-566-0167		<b>Robson Valley Community Calendar</b>  Thank you for your comments, suggestions and contributions! <b>Your e-mails are welcomed at: <a href="mailto:events@visitmcbride.ca">events@visitmcbride.ca</a></b>  <b>McBride &amp; District Public Library:</b> contact 250-569-2411, <a href="mailto:library@mcbridebc.org">library@mcbridebc.org</a> or visit <a href="http://mcbride.bc.libraries.coop">mcbride.bc.libraries.coop</a> for more information on events!  <b>McBride Figure Skating Club</b> Mondays, Wednesdays, Thursdays. Last practice is Dec. 14; restart in 2018 Contact Amanda Moore for more information: 250-569-7557 Monica Rohatynchuk: <a href="mailto:monica.mcbride@outlook.com">monica.mcbride@outlook.com</a>				
<b>Pharmacy Clinics on Wednesdays @ 11am</b> IDA Pharmacy - located at the hospital Contact Monica Rohatynchuk 250-569-8811		<b>Dunster Community Christmas Concert:</b> Seniors & Friends Luncheon and Concert 11:00 to 1:00 Community Concert 7:00 in the evening Call Pete at 250-968-4358 or Jane at 250-968-4463 for more information				
<b>Josh's Place On Thursdays After School - 5</b> Contact Laurella Gabert <a href="mailto:notime2loss@hotmail.com">notime2loss@hotmail.com</a> , Stewart Reimer 250-569-7878, on Facebook <a href="https://www.facebook.com/joshsplacemfc">@joshsplacemfc</a>		<b>Community Christmas Day Dinner:</b> Free turkey dinner! No reservations necessary. Volunteer help & cooks needed. Please call Betty at 569-3386. Sponsored by community members and the Churches of McBride.				
<b>Yoga Instructor:</b> Jannette Chuipka, <a href="mailto:jenchuipka@gmail.com">jenchuipka@gmail.com</a>		<b>14th Annual Canadian Country Christmas Concert</b> Roundhouse Theater, December 11, 2017 – 7 p.m. Tickets \$25, available at Robson Valley Essentials or Advantage Insurance				
<b>Ready, Set, Learn:</b> Fall session runs until December 5th <b>Strong Start:</b> Thursday mornings at the Elementary School. Contact the Elementary School at 569-2721 for more info about these preschool programs or to register your child.		<b>The Robson Valley Community Calendar</b> is an initiative of the McBride & District Chamber of Commerce. To become a member visit: <a href="http://mcbriedechamber.ca">mcbriedechamber.ca</a>				
<b>Dunster Play Group:</b> Alternating Wednesdays at the Dunster Schoolhouse, 10-12pm. Contact Susan Umstot at 569-4033. Will sing in the Dunster Xmas concert on Dec. 18th						
<b>McBride Curling Club Meeting:</b> first Thursday - Monthly, 7pm at the curling lounge.						
<b>McBride &amp; District Volunteer Fire Dept.</b> Weekly meeting Mondays @ 7pm at fire hall.						
<b>Robson Valley Bee Keepers:</b> Meeting Last Friday of each month, 7pm @ the Library Annex. No meeting in December. Contact Monica 250-569-7019						
<b>Community Basketball.</b> Thursdays, 6-9pm @ Highschool						