

CLIMB
HELICOPTERS LTD.
250-793-8911
1/2 HOUR VALLEY TOURS \$450
(3 PEOPLE MAX.)
ANY QUESTIONS, GIVE ME A RING.

Wireless Internet Service
FOR SALE
\$175,000
200+ customers McBride to Valemount
Irene Berndsen
ROYAL LEPAGE Prince George
(250) 569-7397

Advantage Insurance Services Ltd.
Rosemary L. Hruby, CAIB
250-569-2264
PLEASE DRIVE
with your lights on in
Winter Road Conditions!!
~Have Fun at the
Festival of Lights

McBRIDE & DISTRICT PUBLIC LIBRARY
241 Dominion Street McBride, BC V0J 2E0
Hiring: Grounds Maintenance Person
Snow shoveling, lawn mowing & garden upkeep \$11/hr for 5hrs/month in winter and 7 hrs/month in summer
Please submit statement of interest & references to Naomi at library@mcbridebc.org or drop by the library.
Deadline: 4pm, November 27th, 2015

McBride Employment Services Centre
DECEMBER WORKSHOP
Thursday, December 10th 10-12 noon
TIS THE SEASON
Escaping the cycle of
"Seasonal Work"
Robson Valley Support Society - Everyone welcome! Just follow us on Facebook @ rvsbcmcbridevalemount

RICH BOYZ
Mechanical Ltd.
Licensed Heavy Duty and Automotive Mobile Mechanics
Shop Appointments Available
Servicing ALL makes and models
and have CAT ET Scanning Capabilities
Sewing the Robson Valley
Call Joe 250-569-7298

The Purple Door
Your store with more!
Come in and put your name in for the Draw.
Open till 9:00p.m. for Festival of Lights!
210 Main Street McBride
250-569-7230
thepurpledoor@outlook.com

Home Hardware
250-569-2284
Open Mon.-Fri. 8am-5:30 Sat. 8:30-5:30
ONE DAY ONLY
FESTIVAL OF LIGHTS SPECIAL
Friday, November 27th 5pm-8pm
10% OFF
IN STOCK PELLET & WOOD STOVES

FREE The Little FREE McBride Paper

Serving BC's Friendliest Town and Area since 1996!!
For the week of Wednesday, November 25th, 2015
Festival of Lights / Late Night Shopping

November 27, 2015 - Festivities will begin at 6pm with Santa Claus parading down main street lighting the businesses along the way! Enjoy your evening wandering around to the local businesses that will have some great deals and draws - details next week! Grab a bite to eat - the "I've Different" group will be cooking up a storm - no need to cook dinner! Santa will be at the Elks Hall for pictures following the parade! Hot Chocolate will be provided by the Chamber of Commerce at the Elks Hall and Carolling will be heard throughout the streets! We have a great event planned to start off your commitment to "Shop Local" this season with businesses staying open late for your shopping convenience - contest runs Nov. 27, 2015 - Jan. 15, 2016 - Shop More to increase your chances of winning! Check out this weeks insert for more information.

McBRIDE SECONDARY MOVIE NIGHT
McBride Secondary Live Different Group-TONIGHT at 7:00PM. Come on out to see "The Rockies Traverse - McBride to the US Border" tonight at the high school - the incredible story of Will Gadd & Gavin McClung, two paragliders who flew a world record paraglide journey from McBride's Tear Mountain, over Mt. Robson and down Kinbasket Lake and the Rocky Mountains to the US border - 650km in 35 days! Also screening - short films and videos by Robson Valley adventurers and film makers! Tickets are \$10 and all proceeds go to the Live Different Group. Meet and chat with the kids who are going to Mexico at spring break to build a new home for a migrant farm family. See you there.

COMING EVENTS
Wildlife Club Meeting Wednesday, November 25, 7pm at the Beaneys 2 Bistro.
Kids' Christmas Shopping Day Sale: Think of McBride Centennial as you clean your house, sort through boxes, etc. We welcome any gently-used or never-before-used-and-want-to-find-a-good-home items for our sale which is taking place the day of Friday, November 27. There is a box in the front hallway for any donations. Students shop for both the children and the adults in their families. Thanks! (And thanks to those who have already donated!)
McBride Minor Hockey News - Sat., Nov. 28 come cheer on our Atom team. 10am and 1pm game times. Concession open.
Yearly Mission Sale - will be held on November 28, 2015 at the Legion Hall, 6:00p.m.-8:30p.m. Door Prizes, Bake Sale, Christmas Gifts and Crafts. Everyone Welcome. Sponsored by S.D.A. Church.
Robson Valley Fiddle Sticks & String Ensemble will present a Recital on Sunday, November 29th, 2015 at 4:30p.m. at the E-Free Church. Stay for Christmas Tea after the performance. All Welcome!
McBride Evangelical Free Church Presents: The Annual Ladies Christmas Tea. Thursday, December 3. Doors open at 6p.m. with tea at 6:30p.m. and program 7-9p.m. All Ladies are welcome to attend!
Ozalanka Alpine Club: We will hold a meeting at 7:30 p.m. Thurs., Dec. 3 at the Stanley's, 3417 Dore River Road, to discuss club activities for the winter and spring. All members, as well as anyone else interested, are welcome to attend!

McBride & District Hospital Auxiliary's Christmas Extravaganza December 5, 2015, 7-9p.m. E Free Church, McBride, BC. Activities included in are: Cake Walk, Craft Table, Kids Corner, Bake Table, Silent Auction, Raffle, Pie and Coffee to purchase, visiting with neighbours and friends - Free! ~This is our largest fundraiser of the year. All money raised is to purchase equipment for the McBride and District hospital. A great family fun night, come out and join us!
Dec. 13, 7pm Mountain Chapel at 3rd Ave. and Main St. will hold its Christmas Concert of readings and carols. Come relive the Christmas story. Everyone welcome. Refreshments after the show.
Get Immunized! Influenza vaccine is free for: Adults 65 years and over •Healthy children aged 6 to 23 months •Adults and children with a chronic illness •Adults who are very obese (BMI greater or equal to 40) •People working with live poultry •Household contacts of people at high risk for influenza •Pregnant women in their third trimester during influenza season •Household contacts and regular child care providers of children aged 0 to 23 months •People providing service in potential outbreak settings housing high risk persons' Health care workers •First responders •Corrections Officers •Aboriginal peoples. McBride Health Unit, 1126 - 5th Avenue Drop In Only. November 30: 8:30am-11:30am & 1pm-3:30pm. November 26: 8:30am-11:30am. December 2015 on: call to book an appointment at 250-569-2026. The northern way of caring. Influenza shots will be available throughout the flu season. Contact your health unit, 8-1-1 or www.northernhealth.ca for more information.
Bingo Wednesday, 1st, 3rd & 5th Wednesdays of the month at the Legion Hall. Early Bird 6:30p.m. Everyone Welcome!

Important Phone Numbers
Via-Rail Schedule via.rail.ca Phone 1-888-842-7245
Going West - Sunday, Wednesday & Friday...2:44pm
Going East - Monday, Thursday, Saturday...1:48pm
Discounts for 1 or 3 days advance booking.

EMERGENCY 9-1-1
R.C.M.P. 250-569-2255
Hospital 250-569-2251
Health Unit 250-569-2251
K to 7 School .. 250-569-2721
High School 250-569-2295
School District 57 250-569-3117
1-800-256-7857
Report Forest Fires - 1-800-663-5555
Inquiry B.C.-1-800-663-7867 - For Toll Free Calling to Provincial Numbers ... Dial this Number 1st and ask operator to connect you to provincial department
Take a Break in McBride...B.C.'s Friendliest Town!!

WELCOME TO HOME
Antiques & Giftware
STOP IN FOR HOT CHOCOLATE AND GOODIES DURING THE FESTIVAL OF LIGHTS.
OPEN MONDAY-SATURDAY 10:00AM-5:30PM

CO-OP Vanderhoof & Districts Co-operative Association
DRIVER SALES REPRESENTATIVE
For Commercial and Farm Personal Contact where high level of customer service is Job One.
Delivering Fuel East to McBride
Greg Belshaw
990 Railway Road
Prince George, B.C.
Toll Free 1-866-309-2667
Home 250-963-9011
Vanderhoof Head Office
Phone 250-564-3488
Fax 250-567-4490
Cell 250-565-8436

COPPERSTONE HOMES LTD.
Licensed Residential Home Builders and Renovators
NEW HOME WARRANTY
Dwayne 250-569-7040
dwayne@copperstonehomesltd.com
Cody 250-569-4489
cody@copperstonehomesltd.com

COCA COLA
2 L ~ 2 for ~ \$5.00
GATORADE
710 ml ~ 2 for ~ \$4.00
JACK LINK'S JERKY & NUGGETS
80-100 g ~ \$5.99 each
HUSKY
569-2441

McBride AG Foods
569-0140
FRESH FISH FRIDAY!!!
This Week
• Cod • Trout
• Steelhead
ALWAYS CANADIAN
OPEN Mon.-Thurs. 6:30am-6pm, Fri. 6:30am-7pm, Sat. 6:30am-6pm, Sun. 9am-5pm

HORSESHOE LAKE VENTURES
250-569-0075
100 Mountainview Road
Small Engine Repair and Servicing, Agricultural and Industrial Equipment Repair and Servicing.
WE CARRY Fencing Supplies, Auto Parts, Agricultural Equipment Parts, Misc. Hardware, Lawn and Garden Equipment and Parts, Small Engine Parts, and Tires.
Certified dealers of
Arrens lawn & garden equipment

WINTER TIRES HAVE ARRIVED!
Various common sizes in stock, free mount and balance with purchase.
SNOW REMOVAL
D & T INDUSTRIES

WE CAN'T STOP IT FROM COMING, BUT WE CAN KEEP IT OUT OF YOUR WAY!
DARVIN 250-569-7758 or 7050
BLADE BUCKET BLOWER DUMP BOX TRAILER EXCAVATOR

HEAVY HAULING
-Tridem Tilt Deck -Tridem Drop Deck
Best Rates in Town

CONSTRUCTION

- General Construction
- New Construction
- Remodeling
- Drywall
- Residential
- Commercial
- Install Septic Systems, Repair & Removal

BEST PRICES

CONCRETE

- Excavating Road
- Excavation
- Dozer Work
- Ponds, Lagoons & Trenches
- Haul Equipment
- Concrete Slabs
- Drainways
- Finish Concrete
- Debulking Concrete
- Detouring Gravel, Sand & Dirt

30 YEARS OF EXPERIENCE

P.O. BOX 474
 Phone: (250)569-2593
 Fax: (250)569-0178

ROBSON VALLEY CONSTRUCTION
REDI-MIX CONCRETE



Home Housewares

250-569-2415
 Open Mon-Thurs 9-5 Fri & Sat 9-5:30

One Night Only

(Friday, November 27th, 2015)

• Assorted Secret Jewels Soy Candles
170g or 453g - 20% OFF

• Stop by and check out more savings!
 • Hope to see you at the Festival of Lights!!!

Country Chic Beauty Salon
BLACK FRIDAY SALE

One day only!

Friday November 27th!

- SECRET skin care product fiver available!
 Discounts up to 75% off!

Come to salon to place your order.
 (may pre order).

- All in salon products SAVE THE TAX!!!
 250-569-2344 Follow us on facebook!

ROBSON VALLEY PHARMACY



OPEN Mon.-Fri. 9-5, Sat. 9-3
 250-569-8811
 1136 - 5th Ave. inside the McBride Hospital

FEEL BETTER.

NeiMed \$0.99ea.
 Nasal Sinus Kit,
 Refills 50's - 1.00's
 or Nesaflo Neff Pot

Benzlin \$4.99ea.
 Regular Strength or Extra Strength
 Cough Syrup 1.00ml, selected Types

WELLNESS

Polse Pads
 Selected Types \$4.99 pk\$

FEEL YOUR BEST

Baby-D Vitamin D Drops \$9.99ea.
 ReNu Contact Solution \$6.99ea.

Robson Valley Septic

(250) 569-7812

"Your business is our business!"
 Now Closed for the season.
 Emergency calls only until May.

The Farm Store



Open till 9:00p.m., November 27, 2015
for The Festival Of Lights.
 •Special Door Prize

•Stop by and check out our - In Store Specials!!!

COMMUNITY ANNOUNCEMENT

Hello McBride...from Sweden. Hi! In an old barn in Sweden we have found some letters and postcards sent by Ed Anderson in 1920 from McBride, BC Canada, to his siblings in his childhood village in Sweden. According to the Canada Cemetery Project there is an Erick Edward Anderson (1886-1964) buried in McBride Cemetery. If any of Ed's relatives still live in McBride they might be interested in this information. Best regards! john_bay@hotmail.com. **NEEDED!!** "Centurian" Hockey Players (55+) for casual recreational hockey. Monday nights, 8:30pm, one hour only. **Building a stronger community together.** Scotiabank's annual Christmas Hamper Raffle in support of The McBride Old Age Pensioners Organization. Draw Date December 8th. Tickets are \$1 each or \$5 for six, tickets available at the McBride Branch. All funds raised will be matched by Scotiabank. Thank you for your support.

Royal Purple News. If you know of anyone who would not otherwise have a Christmas Dinner or a family who is in need please contact Sandy Birnie 250-569-4101, Dawna Hickerty 250-569-3210 or Flo Myrno 250-569-3254. Thanks to the Community for their Generous donations towards this endeavour to make everyone's Christmas a Little Bit Better.

McBride Community Volleyball - McBride High School Gym at 7:00pm to 9:00pm starting Tuesday, December 1, 2015 and continue every Tuesday that the school is open. For further information call Nadine at 250-569-2503.

Fish And Wildlife Club Meeting, Wednesday, November 25, 7:00pm. at the Beaneys.

Beekeepers and Wannabee-keepers Information Sharing Meeting Friday, December 4th at the McBride Library Annex, 7pm. A call to valley beekeepers and anyone hoping to start up an apiary next spring. Mentoring has a long tradition in beekeeping. This is an opportunity for experienced beekeepers, novice beekeepers, and anyone hoping to start a hive or two to meet and share information and "wisdom" on the ups and downs of apiculture. All welcome. No RSVP. Questions/Contact Monica Zieper 250-569-7019. NB: Anyone thinking of starting up new hives must order bees by Dec./Jan. so planning is essential.

The Dunster Winter Market/Soup Kitchen will be starting this winter on Saturday, December 5, from 11am to 12:30pm. On Dec. 12th we will have our annual fund-raiser pot-luck lunch with cash donations to the two Food Banks in the Valley. Then the markets will stop until Jan. 9th in 2016.

Community Christmas Day Dinner...Please join us on December 25 at 4pm. in the Evangelical Free Church for a FREE Turkey Dinner. No reservations necessary. Volunteer help and cooks needed (call Betty 250-569-3386). ~Sponsored by Community members and Churches of McBride.

McBride Pickleball - McBride High School gym at 7:00pm and continue every Wednesday that the school is open. For information about Pickleball contact Sharon Schiefelbein 250-569-2583.

BUY, SELL, RENT & MISC.

For Sale-Case 1030 tractor, diesel, 95 horse power, loader, bale point, cab, good tires, runs well, has been very reliable, \$3,900 obo. 1997 Honda Civic. Standard. Silver in color. Body in nice shape. Replaced engine. Runs very well. Decent tires. Priced to sell at \$900. 250-569-3423•**For Sale-4** Good Year Wrangler Duratrac M+S LT25/85R16 120/1160 10% left. Perfect for farm vehicle \$100 obo the lot. 250 569 0351•**For Sale-Elan** downhill skis c/w bindings, poles, size 9 mens boots. \$80.00 phone 250-569-8800•**For Sale-1983 2** Horse Trailer \$1,800. 1992 Chevy Pick 144000km. 1500, awesome 350 engine. \$5,995 Ph:250-644-7717•**For Sale-7** month old bull calf (7/8 Red Angus 1/8 Simmental) \$2000.00. Call 250-968-4474•**For Sale-Bausch+Lomb** 15-45x60 Elite spotting scope \$350. Leupold 30x60 spotting scope \$300. Browning camo lined gortex bib overall 3XL, camo jacket 2XL, browsing logo cap, all for \$100. Propoint 1/2" gold quick release drive socket and colour coded socket set \$40. New Jet 1/2 ton mini-mite ratchet lever hoist. \$150. New Bushnell Discover 10x42 binoculars \$250. 250-569-3380•**For Rent-3** Bedroom House on 4th Ave. \$500/month plus utilities. Phone 250-569-3374 or 250-569-7310•**For Sale-** Duramax vinyl weatherproof storage shed 8 x 10.5'. New condition on heavy pallet base. \$1000. Phone 778-258-0333•**For Sale-4** Goodyear Wrangler A/Ts LT275-65R18, studded, 80 percent left. \$400 Ph:569-7769•**For Sale-5** young goats, 3 doelings and 2 bucklings. \$2.25/lb live weight with a package deal available. Also one 3 yr. old Alpine cross doe and 1-1/2 yr. old proven Oberhasli billi for sale. 250-569-7800•**For Sale-2003** Toyota Tacoma. Green, extended cab, 4 cyl auto, 165k, clean, new battery & exhaust system, extra set of tires on rims. Winch, locking canopy, boat rack, electric boat loader, 10' boat. #13,000 OBO. Contact Mick @ 250-968-4332•**For Sale-2007** Pontiac Vibe, 230,000 kms. Comes with summer & winter studded tires. Very good condition and ready for winter. \$4000 OBO. Call Sharon Stearns 250-968-4544•**For Sale-**Push type lawn mower, 15" cut, \$10. Wheeled garbage can, \$4. Older, orange secretary's chair, \$4. Contact D. Simpson 250-569-3343•**For Sale-13** Lambs, males & females. 5-7 months old, ready to go any time. Please call Lisa 1-250-553-2365•**For Sale-**RSF Wood Furnace, good for garage or green house \$200. Propane cook stove with oven, needs no electric \$200 Ph:250-569-2488•**For Rent-1** bedroom apartment across from hospital. \$550 & \$600 a month. N/S, N/P, Fridge/stove included. Call 250-569-0208•**For Sale-Hella** Rallye 3000OFF driving lights, new, asking \$200 for pair. 100 ft. x 3/8" capacity hand crank air hose reel, new, asking \$50. Phone 250-569-3380•**To place an ad call 569-3110, Fax 569-0220 or drop info at 455 King St.**

Greyhound Schedule (The Farm Store) (Closed Sun.) 250-569-0425
Depart to East - 2:45am Daily (Valemount, Jasper, Edmonton)
Depart to West - 7:40am Daily (Prince George)

Please contact **The Little McBride Paper** with all coming events, news, trivia, comments, anything!! 250-569-3110, Fax:250-569-0220, email:sglines3@telus.net, P.O. Box 441, McBride, B.C. V0J 2E0 or drop off at 455 King St. If we don't know about it, we can't inform the public about it! Scott & Susan Glines (Oscar & Broom)
 All articles and ads are not the expressed opinion of this paper or it's owners.

Take a Break in McBride...B.G.s Friendliest Town!!

Order & pre-pay by phone for pickup in McBride or Seas
Infinity
 1 855 566 4225
 Vitamins, Specialty Foods & More
 loffice@telus.net

ROBSON VALLEY PHYSIOTHERAPY
 McBride - Monday, Tuesday & Friday.
 Valemount - Wednesday
 Phone 250-569-0053

A LITTLE THINKER...
 Don't overuse exclamation marks!!!!

Robson Valley Pet Hostel
Grooming & Boarding

Ann Schwartz - Animal Health Technician
 250-569-3319
 Website with information and galleries:
 www.pethostel.ca

PAINTING
 Call Phil @ 250-569-0205

THE HAIR SHOPPE
 569-3359 803 3rd Ave. - side entrance

PAUL HEIGHT
CHARTERED ACCOUNTANT
 In Jasper and serving the Robson Valley
 Telephone 1-780-852-4000
 Email height@incentre.net

Meraki Builders
 Construction and Renovations
 250 569 7885 (Mitch) 250 569 4709 (Brenden)
 or email at merakibuilders@outlook.com

MOBILE MEAT PROCESSING
 Field to Plate Service © "Stress free animals for domestic and Game make better meat"
 Mark Roth 250-569-7805 "Serving the Robson Valley"

It PAYS to Recycle!
 McBride Bottle Depot: 569-7760
 HOURS: Thursday, Friday, and Saturday
 10 am - 12 pm and 1 pm - 4 pm
 It's worth it.

Alaina Chapman RMT
 Registered Massage Therapist
 Mom, Wed and Thurs.
 Ph: 250-566-1040 To book an appointment

DRYWALL SERVICES
 250-569-0320
 Gerald Moore

M4 CONSTRUCTION (250) 569-7147
Frank and Sons Automotive Ltd.

Winter tires 20% off!
RV Storage \$25/month
 975 Airport Road - 250.569.8830

Glass Cutting, Picture Printing, Matting and Framing
 call Bill Arnold 569-3381

REALLY NICE STONEMARK!!!
 All styles Call Adam Roth Stonemasonry
 250-569-6809 adamrothventures@gmail.com
 "Rocking the Robson Valley!"

Cougar Den Cabins 250-569-7308
Daily, Weekly & Monthly Rates
 1800 semson rd. mcbride (bottom of lucille mountain)

Gift Certificates Available!
 •Reindeer Droppins in Stock!!
 Get your Chamber Stamp when you purchase \$10 or more!
 M-F:6a.m.-5p.m. Sat.:9a.m.-5p.m. Sun.:Closed
 250-569-0133

Odds 'n Ends 250-569-2645
 Wed. to Sat. 10 - 6
 Many in store specials and hourly draws.

Open Late on Friday!

HORSES HOEING

Gary Schwartz
 Farrier Service
 250-569-3319
 McBride, BC



McBride Community Forest Corp.

Expression of Interest

The McBride Community Forest Corp. (MFCFC) is seeking qualified companies to make an expression of interest for harvest of timber in late 2015 and 2016. The MFCFC will be harvesting ~18,000 to 30,000m3 of mostly spruce and subalpine fir (balsam) from Block 2 on Bell Mountain during this period. Given site conditions, a majority of this volume may need to be harvested during the winter season. To follow are the requirements for this expression of interest:

- Be resident in the vicinity of the McBride Community Forest (Dunster to Crescent Spur)
- Certified with the B.C. Forest Safety Council
- Registered with Worksafe B.C.
- Comprehensive Insurance of \$5,000,000; coverage for fire fighting of \$500,000.
- References may be requested following this EOI.

If you have any questions, please contact Jeff McWilliams at 604-351-7710 or jeff.mcwilliams@telus.net. Please submit an Expression of Interest to the McBride Community Forest Corp., Box 519, McBride, B.C. V0J 2E0, by 4:00 PM, December 4, 2015.

FOREVER PRINTING & SIGNS

- Signs •Magnetics •Banners •Sandwich Boards
- Vehicle Decals •Window Decals
- Binding •Posters •Business Cards •Address Labels
- Full Color Laser Photo Copies •Invitations
- Brochures •Trophies •Engraving •T-shirts & more

19 years experience

for more information please contact

Scott or Susan at 250-569-3110,

fax: 250-569-0220, email: sglines3@telus.net

MGRIDE MIDGET GRIZZLIES

McBride Midget Grizzlies Take Quesnel Tourney: The McBride Midget Grizzlies hockey team travelled to Quesnel, BC on November 14 weekend to play in a nine team tournament. In the first game on Friday night the Grizzlies took on Quesnel Caribou Pulp and Paper. Forward, Dylan Vizza led the way with a hat-trick and two assists in the 8-3 win. Valenmont product, Darian Griffin chipped in with 2 goals and 2 assists. Brett Jones, Rylan Moore and Bryden Bastan also scored for the Grizzlies. The Saturday morning

game saw the Grizzlies take on AAA Photography also from Quesnel. Grizzlies goaltender, Robert Knezacek, had a shut out going until the last two minutes of the third period when Quesnel scored to make it a 6-1. Griffin notched a hat-trick with Keith Shawara adding a goal and two assists. Shaelyn Bratten and Vizza rounded out the scoring. Despite a back injury, Noah Janke added his second of four assists for the tourney. In their second game of the day the Grizzlies played in a physical affair against Quesnel Caribou Ford. The Grizzlies skated to a 4-2 victory which placed them into the final on Sunday. Vizza (2 G), Shawara and Griffin scored for the Grizzlies. The lone grizzlies assist in the game went to center, Dawson Drader. The McBride Grizzlies, Kelowna Thunder and Quesnel Caribou Ford ended up, 1,2,3 in round robin play with the Grizzlies awaiting the winner of the semi-final between Kelowna and Quesnel. Quesnel Caribou Ford was able to defeat the Kelowna Thunder giving them another shot at the Grizzlies in the final. In a well refereed game the Grizzlies came out flying with Bastan, Vizza, Moore, Jones, Shawara and Bratten notching goals. Knezacek took the shut-out in the 7-0 victory. Austin Gibson, Vizza (3 A), Griffin (4 A), Janke and Bratten all contributed with assists. Forwards Jordan Gibson and Billy Littlechild each had quality scoring chances, particularly in the final, and coaches Gerry Porrier, Brian Shawara and Brady Knezacek are confident they both will score soon. Injured Grizzlies affiliated player (AP), Eihan Quan is expected back for the November 22 home exhibition games against Prince George. Next tournament for the Grizzlies in the early December when they travel to Logan Lake, B.C. -Submitted by Brady Knezacek.

Rural Education in McBride - your voice matters!

Monday, November 30, 4:00-6:00 PM at McBride Secondary School. What do you want to see for rural education in McBride over the next 5 years? Do you feel that the schools are preparing our graduates for the workforce? Is the current funding model (based on per student) working in our schools? Should rural schools be funded differently than urban schools? Join SD57's Ad Hoc Committee on Rural Education for a 2 hour session targeting rural school education. The meeting will be facilitated by Stormy Lake Consulting and will be table discussion format. Students, parents, grandparents - everyone is welcome.

BIRTHDAY WISHES NOVEMBER 25 - DECEMBER 1

Hal Anderson, Sandra Osterberg, Aaron Baumbach, Angela Bend, Rebecca Friesen, Shane Sarasin, Amanda Moore, Clifford Ferguson, Gayven Rich, Michelle Sansom, Seth McMaster, Walter Evans, Karen Andrews, Josanna Rollinson, Peter Hultka, Madelyn Shaw, Michelle Desormeau, Nicole Molendyk, Susan Glines, and to anyone else we missed, Happy Birthday!

CHURCH NEWS N' THINGS

Anglican United Church - Downtown Thrift Store on Dominion Street. Clothes and Household Goods. Open: Tues. 1:00-3:00 & Fri. 1:00-3:00 •Dorcas is OPEN Tuesdays 1pm-3pm. Contact number 569-2479 Terri or 569-4031 Carol •Foodbank contact number is 569-3186 •Seventh-day Adventist Church-Meet **Take a Break in McBride...B.G.s Friendliest Town!!**

McBride Secondary School News

The McBride Secondary School PAC would like to thank the vendors and the public for their support of Saturday's Christmas Craft Fair! It was a great day of shopping for beautifully made local art and crafts, delicious home baking and direct sales with local entrepreneurs as well as visiting with friends and neighbours. Thanks to Jill Philpott for donating 5lb of Roasted Bean coffee, the Regional District of Fraser-Fort George for supplying the tables at no cost and to Mr. Shaw for providing the music and an extra set of hands. McBride's support of the students of McBride Secondary means that the PAC can purchase uniforms for sports teams, help pay for transportation to competitions in Prince George and beyond, run a breakfast program, and bring in guest speakers and presentations, among any other things. Thank you McBride and have a Merry Christmas!

LIBRARY NEWS

Book Discussion Group. Thursday, November 26th at 1:30pm. This month's theme is "Based on the Book". Read the story then watch the movie, and tell us what you think! All welcome!
Free Legal Advice Clinic. Tuesday, December 1st at 7:30pm. Hosted by RVSS and the Library. Legal questions? Come chat with Barrister Jesse Stamm via Skype. Free, private 15 minute sessions available. Call Penny at 569-2266 or Naomi at 569-2411 with questions.
Legos/Minecraft Club. Ages 5+. Wednesdays at 3:00pm. Lego, Minecraft, Crafts & Games.
Tuesday Night Jam. 7pm in the Annex. Like to play rock, bluegrass, folk and more? Come meet with local musicians and learn new music. Contact Dave Marchant at 569-2569 with questions.
Fibre Arts Group. Thursdays at 10am. The group that previously met at Odds & Ends is now meeting in the Annex. Bring your knitting, crochet or needlework project and come hang out!

O.A.P.O. NEWS

Be Sure to get your tickets at the Bank as this pays for your Christmas Dinner on the 9th of December at the Elks Hall - all Seniors Welcome. Everyone going to see Steve Elliott on Saturday the 28th will meet at Beaverview Lodge at 9 am. Dinner this Wednesday the 25th is sponsored by the Hospital Auxiliary & we thank them very much.

ABSENT MINDED

S T N A T S I D G V H D V W T
A C E V I T N E E T T A N I O N
D B A E O U Y E B Y S D E O A
U E R T C B U E D Q E M W L V
N M I Z T G L R C T W I T G R
M U G P A E E I C A T F F A E
I S N V U A R A V H P A N T S
N E Y H M C R B D I R S J H B
D D Z I E T C R R A O Z B E O
F Q N Y S E A O W A K U I R N
U G M I P W D A E V I E S I U
L A D Y N D Y E E Z R U N V N B
A I R H E A D E D E P T E G R
L U F T E G R O F L O S S T D M
C H G O H E E D L E S S Z Y P

AIRHEADED	OBLIVIOUS
BEMUSED	PREOCCUPIED
DAYDREAMING	SCATTERBRAINED
DISTANT	SPACEY
DISTRACTED	UNHEEDED
FARAWAY	UNMINDFUL
FORGETFUL	UNOBSERVANT
HEEDLESS	VAGUE
INATTENTIVE	WITHDRAWN
LOST	WOOLGATHERING

Take a Break in McBride...B.G.s Friendliest Town!!

TANGLED TINSSEL
A Christmas Shopping Opportunity.
Come shop local and avoid traffic and lineups.

Sunday
November 29
1-4
at the
McBride
Legion,
808 4th Ave

A direct sales/home based business Fair

Original Cut
INDEPENDENT DESIGNER
MAGNOLIA
and Vine

beantrunk
CLEOS
CARD CREATIONS

Scentsy
Tupperware

MCBRIDE HOTEL
250-569-2277

Sunday, November 29, 2015

SUPER BOWL POOL TOURNAMENT

come out and join us for pool and chili.
Please sign up before Saturday to insure your place in the tournament.

Saturdays at 9:30 & 11am. and Wednesdays at 7pm. Phone: Ph: 569-3370 •Memmonite Church-Meet Sundays 11am and 7:30pm & Wednesdays at 7:45pm Ph: 569-7297 •Mountain Chapel (PAOC)-Sunday School & Adult Classes-10am, Services-11:10am. Ph:569-3350 •Anglican United Church-441 Dominion Street. Meet Sundays at 10:00 a.m. Phone 569-3206 or 569-3386. •Evangelical Free Church-Worship Gathering at 10:30am. Ph:569-2378 •Robson Valley Christian Centre-Meets in home Sundays 11am, Dunster Ph:968-4335 •St. Patrick's Catholic Church-Meets Sundays at 11:00am. Ph:569-2606. Call to Confirm.



McBride Community Forest Corporation
Seeking Advisory Committee Volunteers

Carrier License Purchase Review
The Carrier Advisory Committee will work with B.A. Blackwell and Associates to assess the viability of the current offer and area. The Committee will provide recommendations to the MCFC Board of Directors on the long term benefits and risks of the current package and propose alternatives as necessary.

The MCFC is seeking 3 - 4 volunteers for the advisory committee who:

- Have knowledge of the proposed area including the history of harvesting, existing roads and bridges infrastructure, access, trapping, non-timber forest resources and recreation.
- Have experience working collaboratively as part of a group.
- Are willing to prioritize the best interests of the community and the long term sustainability of the community forest in discussions and recommendations.

Expression of Interest
Send your qualifications and expression of interest to Jeff McWilliams at jeff.mcwilliams@telus.net or to the MCFC, PO Box 519, McBride, BC V0J 2E0

NEIGHBOURHOOD PUB

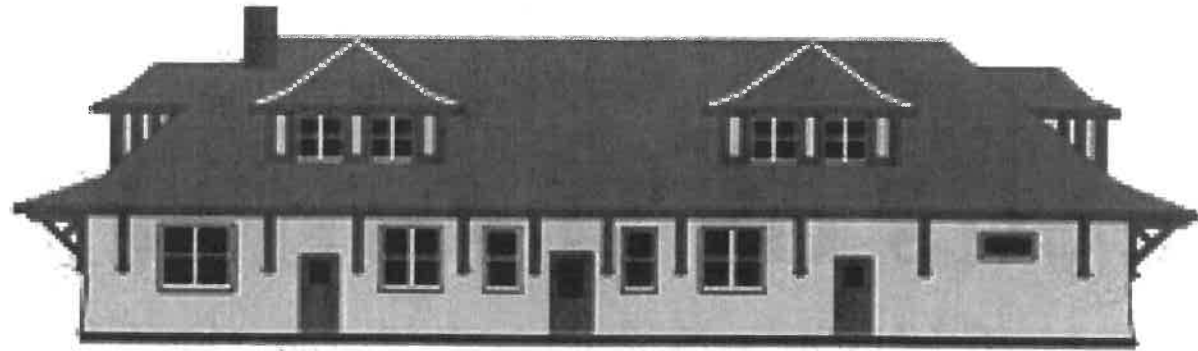
250-569-0101
11am - 11pm
Monday - Saturday!

Order your HOLIDAY PARTY TRAYS
Contact Rosanna for further information gigglingirl16@hotmail.ca
Check out our Festival of Lights Spectacle

MCBRIDE & DISTRICT PUBLIC LIBRARY
241 Dominion Street
Phone: 250-569-2411

REGULAR HOURS
Tuesdays: 10-5pm, 7-9pm
Wednesdays and Thursdays: 10-5pm
Fridays: 2-9pm
Saturdays: 2-5pm
www.mcbride.bclibrary.ca
library@mcbridebc.org

Whistle Stop Gallery



Unique handcrafted excellence by local artists and crafters

Festival of Lights and Christmas specials

We will be open until 8PM on Friday, November 27th for the Festival of Lights and until 6PM every Friday until Christmas.

With each purchase enter our draw for a gift basket filled handcrafted work from our local artisans

FRIDAYS ONLY - Get 10% off any purchase after 3PM until Christmas!

Open Daily
in the train station on 1st Ave.
250-569-8891

Arts and culture are the heart of a community and the strength of a community is its heart!

Whistle Stop Gallery

Presents

Seeds of Inspiration

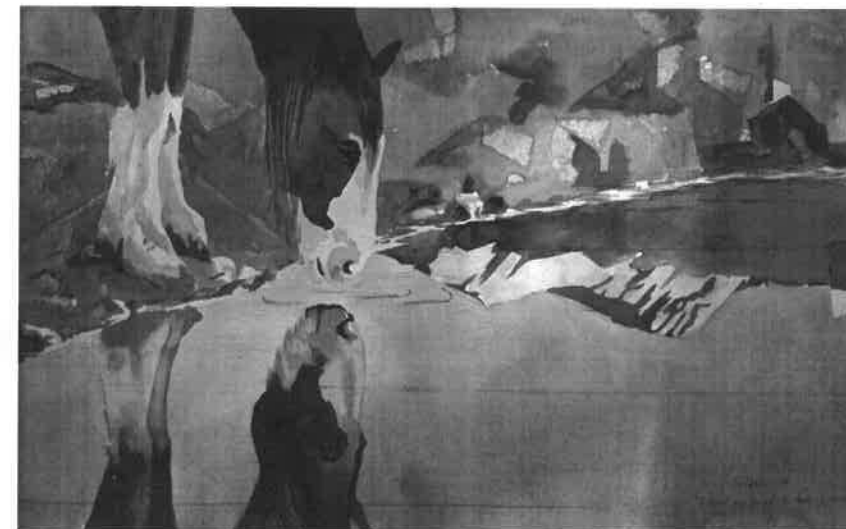
Celebrating agriculture in the Robson Valley

featuring
Whistle Stop Gallery artists.

OPENING NIGHT

Friday, December 4th, 7:00PM
with artist talks and refreshments

at the
Library/Museum
on Dominion St.



Sheilagh Foster

*Glen Frear, Sasha Scott, Bob Fredericks,
Forest Felters and more!*



David Marchant



THE HISTORIC MCKALE HOUSE

421 MAIN STREET, MCBRIDE

OPEN WED - FRI 10 - 5, SAT 10 - 4

LATE NIGHT FRI NOV. 27 TILL 9PM

Christmas Gift Ideas

Quality Used Books

Wide range of fiction: Classics, Fantasy, Historical, Intrigue, Mystery, Western
Non-fiction: A to Z - Adventure....Local... Memoirs...Zoology
Children's classic, chapter, & picture books

Puzzles

Beautiful jigsaw puzzles; fun & challenging wooden, wire, and bamboo puzzles

Games & Wooden Toys

Settlers of Catan, Chinese checkers, cards and more; wooden toys for little hands

Puppets

Huge selection of Folkmanis puppets--great for kids & adults; heirloom quality
Marionettes

Wild Hats & Touch Screen Gloves

fun & useful

Candy

Make your own advent calendar-choose from our wide selection of candy
Chocolate lumps of coal, chocolate pizza slices, gourmet candy canes
Other candy gift ideas

Unique Gifts

Kitras blown-glass medallions, hearts & baubles
Mini wooden and mini stone boxes; mini flasks; gift boxed mugs
Metal and wooden gifts for inside or out the house

Plus

Christmas cards, cellophane for gift baskets, wrapping paper

HISTORIC MCKALE HOUSE gift certificates available



McBride Figure Skating Club

Christmas Skate &

Bake Sale

Raffle Tickets will also be available for the draw on December 17

Come watch and support your local skaters
When: Wednesday December 2, 2015

Time: Bake sale starts at 4:45pm

Show starts at 6:00pm

Where: Robson Valley Recreation Center

We will also be taking donations for the Food Bank

We have heard Santa will be stopping in for a visit



