

**HEAVY HAULING**  
**-Tridem Tilt Deck - Tridem Drop Deck**  
**Best Rates In Town**

CONSULTATION

- General Construction
- New Construction
- Remodeling
- Drywall
- Residential
- Commercial
- Instalf Septic Systems, Repair & Removal

**BEST PRICES**

CONCRETE

- EXCAVATION
- Excavating Road
- Excavation
- Dozer Work
- Ponds, Lagoons & Trenches
- Haul Equipment
- Concrete Slabwork
- Driveways
- Finish Concrete
- Delivery Concrete
- Delaney Gravel, Sand & Dirt

**30 YEARS OF EXPERIENCE**

P.O. BOX 474  
 Phone: (250)569-2593  
 Fax: (250)569-0178

**ROBSON VALLEY CONSTRUCTION**  
**REDI-MIX CONCRETE**



**Home Housewares**  
 250-569-2415

Open Mon-Thurs 9-5 Fri & Sat 9-5:30  
**NOW IN STOCK**

**Christmas Candy**  
 and a Variety of Decorations  
 for the *Festival Of Lights!!!*  
 (Friday, November 27th, 2015)

**Country Chic Beauty Salon**

As of February 1st, 2016 the salon will no longer offer ESTHETIC services!! Any Esthetic gift cards MUST be redeemed by FEBRUARY 1, 2016, no cash refunds! Thank you to those who have supported me!

-Jennette

As a result there will be a room for lease in Country Chic starting FEBRUARY 1st. Contact for details.

250-569-2344

Follow us on facebook!

**ROBSON VALLEY PHARMACY**



OPEN Mon.-Fri. 9-5, Sat. 9-3  
 250-569-8811

1136 - 5th Ave. Inside the McBride Hospital

LESS SNEEZING. MORE SAVING

- ATOMA COUGH & COLD MEDICATION \$5.99 EACH
- ATOMA COLD & SINUS CAPLETS \$5.99 EACH
- ATOMA MEDICATED NASAL SPRAYS \$4.99 EACH
- WELLNESS
- ADVIL PEDIATRIC DROPS 2.4ml \$7.49

FEEL YOUR BEST

COLD-FX EXTRA STRENGTH \$19.99

ONISOM SLEEP-GELS \$4.99

PERSONAL CARE  
 VISINE RED EYE \$5.99

What kind of shoes do Ninjas wear? Sneakers!

**Robson Valley Septic**

(250) 569-7812  
 "Your business is our business!"  
 Now Closed for the season.  
 Emergency calls only until May.

**HISTORIC MCKALE HOUSE**

421 MAIN STREET 569-7176

GREAT GIFT IDEAS FOR YOUNG AND OLD

COBBLE HILL PUZZLES

CHOCO PIZZA SLICES/IMPORTED TOFFEE

ALL SORTS OF CANDY FOR YOUR

HOME MADE ADVENT CALENDAR

AND AS ALWAYS, WONDERFUL USED BOOKS!

M-F 10-5, SAT 10-4

**FREE The little FREE**

**McBride**

**Paper**



Serving B.C.'s Friendliest Town and Area since 1996!!!  
 For the week of *Wednesday, November 18th, 2015*

**McBride Secondary News**

McBride Secondary School Christmas Craft Fair Saturday, November 21 - 11:00pm to 3:00pm at the McBride Secondary School, 1300 2nd Avenue, McBride. 50 tables of Robson Valley art, home crafts, baking, home-based business sales and more. Concession and gift wrapping table. Silent auction and pickup for the postsethis ordered in October. This is PAC's largest fundraiser for the year and money raised supports McBride Secondary School students. Admission by donation.

**MGBRIDE FIGURE SKATING CLUB**

Christmas Skate & Bake Sale. Raffle Tickets will also be available for the draw on December 17. Come Watch and support your local skaters on Wednesday, December 2, 2015. Bake sale starts at 4:45pm. Show starts at 6:00pm. at the Robson Valley Recreation Centre. We will also be taking donations for the Food Bank. We have heard Santa will be stopping in for a visit.

**GRIZZLIES NEWS**

Midget Grizzlies vs Prince George. McBride Arena 10:30 & 1:30 on Sunday, November 22. Come Cheer the Team On!!!

**O.A.P.O. NEWS**

November 25th dinner will be at Beaverview and catered by Hospital Auxiliary Dinner at 12 noon with meeting to follow. Our last trip of the year will be on Saturday, November 28th to Prince George to see Steve Elliott at the first Baptist Church. Your costs will be motel room, \$30.00 towards your ticket and of course your food. OAPO gaming will take care of the Bus etc. I will be collecting at the Birthday Tea on the 18th or call me at 250-569-3210 or email dawnah@telus.net. -Dawna

December 9th Christmas dinner will be at the Elks Hall sponsored by Scotiabank. Dinner will be at 12 noon.

**COMING EVENTS**

**Kids' Christmas Shopping Day Sale.** Think of McBride Centennial as you clean your house, sort through boxes, etc. We welcome any gently-used or never-before-used-and-want-to-find-a-good-home items for our sale which is taking place the day of Friday, November 27. There is a box in the front hallway for any donations. Students shop for both the children and the adults in their families. Thanks! (And thanks to those who have already donated!)

**Yearly Mission Sale** - will be held on November 28, 2015 at the Legion Hall, 6:00pm-8:30pm. Door Prizes, Bake Sale, Christmas Gifts and Crafts. Everyone Welcome. Sponsored by S.D.A. Church. **Robson Valley Fiddle Sticks & String Ensemble** will Present a Recital on Sunday, November 29th, 2015 at 4:30pm. at the B-Free Church. Stay for Christmas Tea after the performance. Everyone Welcome!

**McBride Evangelical Free Church** Presents: The Annual Ladies Christmas Tea. Thursday, December 3. Doors open at 6pm. with tea at 6:30pm. and program 7-9pm. All Ladies are welcome to attend! **McBride & District Hospital Auxiliary's** Christmas Extravaganza. December 5, 2015, 7-9pm. E Free Church, McBride, BC. Activities included in are: Cake Walk, Craft Table, Kids Corner, Bake Table, Silent Auction, Raffle, Pie and Coffee to purchase, visiting with neighbours and friends - Free! ~This is our largest fundraiser of the year. All money raised is to purchase equipment for the McBride and District hospital. A great family fun night, come out and join us!

Dec. 13, 7pm Mountain Chapel at 3rd Ave. and Main St. will hold its Christmas Concert of readings and carols. Come and relive the Christmas story. Everyone welcome. Refreshments after the show.

**Get immunized!** InFLUenza vaccine is free for: Adults 65 years and over •Healthy children aged 6 to 23 months •Adults and children with a chronic illness •Adults who are very obese (BMI greater or equal to 40) •People working with live poultry •Household contacts of people at high risk for influenza •Pregnant women in their third trimester during influenza season •Household contacts and regular child care providers of children aged 0 to 23 months •People providing service in potential outbreak settings housing high risk persons •Health care workers •First responders •Corrections Officers •Aboriginal peoples. **McBride Health Unit, 1126 - 5th Avenue Drop In Only.** November 24, 30: 8:30 am-11:30am & 1 pm-3:30 pm. November 26: 8:30am-11:30am. December 2015 on: call to book an appointment at 250-569-2026. The northern way of caring. Influenza shots will be available throughout the flu season. Contact your health unit, 8-1-1 or www.northernhealth.ca for more information. **Bingo Wednesday, 1st, 3rd & 5th Wednesdays of the month at the Legion Hall. Early Bird 6:30pm. Everyone Welcome!**

Greyhound Schedule (The Farm Store) (Closed Sun.) 250-569-0425  
 Depart to East - 2:45am Daily (Valenmount, Jasper, Edmonton)  
 Depart to West - 7:40am Daily (Prince George)

Please contact The Little McBride Paper with all coming events, news, trivia, comments, anything!! 250-569-3110, Fax:250-569-0220, email:sglines3@telus.net, P.O. Box 441, McBride, B.C. V0J 2E0 or drop off at 455 King St. If we don't know about it, we can't inform the public about it! Scott & Susan Glines (Oscar & Broome)  
 All articles and ads are not the expressed opinion of this paper or it's owners.

**Take a Break in McBride...B.C.'s Friendliest Town!!**

250-569-2645  
 Wed. to Sat. 10 - 6

**Odds 'n Ends**  
 Crafting a little Christmas magic? Let us help.  
 Ribbon, lace, trims 20% Off

**BORSES HOEING**  
  
 Gary Schwartz  
 Farrier Service  
 250-569-3319  
 McBride, BC

Order & pre-pay by phone for pickup in McBride at Sears  
**Infinity**  
 Valenmount  
 1 855 566 4225  
 Vitamins, Specialty Foods & More  
 info@infinitytelus.net

**Quiet Breeze Creations**  
 will have a table at this years Craft Fair on November 21st at the High School.

**ROBSON VALLEY PHYSIOTHERAPY**  
 McBride - Monday, Tuesday & Friday.  
 Valenmount - Wednesday  
 Phone 250-569-0053

**Robson Valley Pet Hostel**  
**Grooming & Boarding**  
 Ann Schwartz - Animal Health Technician  
 250-569-3319 Website with information and galleries: www.pjhostel.ca

**PAINTING**  
 Call Phil @ 250-569-0205  
**THE HAIR SHOPPE**  
 569-3359 803 3rd Ave. - side entrance

**PAUL HEIGHT**  
**CHARTERED ACCOUNTANT**  
*In Jasper and serving the Robson Valley*  
 Telephone 1-780-852-4000  
 Email height@incentre.net

**Meraki Builders**  
 Construction and Renovations  
 250 569 7885 (Milich) 250 569 4109 (Brenden)  
 or email at merakibuilders@outlook.com

**MOBILE MEAT PROCESSING**  
 Field to Plate Service © "Stress free animals for domestic and Game make better meat"  
 Mark Roth 250-569-7805 "Serving the Robson Valley"

**It Pays to Recycle!**  
 McBride Bottle Depot: 569-7760  
 HOURS: Thursday, Friday, and Saturday 10 am - 12 pm and 1 pm - 4 pm  
**Alaina Chapman RMT**  
 Registered Massage Therapist  
 Mon., Wed. and Thurs.  
 Ph: 250-566-1040 To book an appointment

**DRYWALL SERVICES**  
 250-569-0320  
 Gerald Moore

**M4 CONSTRUCTION** (250) 569-7147  
**Frank and Sons Automotive Ltd.**  
**Winter tires 20% off!**  
**RV Storage \$25/month**  
 975 Airport Road - 250.569.8830  
**Glass Cutting, Picture Printing, Matting and Framing**  
 call Bill Arnold 569-3381

**REALLY NICE STONEMWORKILL**  
 Call Adam Rath Stonemasonry  
 250-569-6809 adamrathventures@gmail.com  
 "Rocking the Robson Valley!"  
**Cougar Den Cabins**  
 250-569-7308  
 Daily, Weekly & Monthly Rates  
 1800 samson rd. mcbride (bottom of lucille mountain)  
 • Gift Certificates Available!!  
 • Reindeer Droppings In Stock!!  
 Get your Chamber Stamp when you purchase \$10 or more!  
 M-F: 9a.m.-5p.m. Sat.: 9a.m.-5p.m. Sun.: Closed

**Beauregard's Glazes**  
 250-569-0133



**R.B. HATCHARD CONT.**  
Gravel Pit  
**CLOSED FOR  
THE SEASON**  
250-569-2493

**CLIMB**  
HELICOPTERS LTD.  
**250-793-8911**  
1/2 HOUR VALLEY TOURS \$450  
(3 PEOPLE MAX.)  
ANY QUESTIONS, GIVE ME A RING.

Wireless Internet Service  
**FOR SALE**  
**\$175,000**  
200+ customers McBride to Valemount  
Irene Berndsen  
(250) 569-7397

Advantage Insurance  
Services Ltd.  
Rosemary L. Hruby, CAIB  
250-569-2264  
**DRIVE CAREFULLY**  
Respect the  
**Winter Road Conditions**  
Phone: 250-569-2411

**McBRIDE & DISTRICT  
PUBLIC LIBRARY**  
241 Dominion Street McBride, BC V0J 2B0  
**Hiring: Grounds Maintenance Person**  
Snow shoveling, lawn mowing & garden upkeep  
\$11/hr for 5hrs/month in winter and 7hr/month in summer  
Please submit statement of interest & references to  
Naomi at library@mcbridebc.org or drop by the library.  
**Deadline: 4pm, November 27th, 2015**

McBride Employment Services Centre  
**NOVEMBER WORKSHOP**  
Thursday, November 20<sup>th</sup> 10-12 noon  
**Invincible**  
**Interviews**  
*Tips for confidence.*  
Robson Valley Support Society - Everyone welcome.  
Just follow us on Facebook @ rvsbcmbride-valemount

**Three Ranges**  
**The Valley's**  
Locally  
Brewed Beer!!  
Open Thursday - Saturday 2-8pm  
and Sunday 1-6pm  
Downtown Valemount across from the IDA  
**250-566-0024**  
<https://www.facebook.com/ThreeRangesBrewingCompany>

**The Purple Door**  
Your store with more!  
**Ladies Night**  
5:00p.m. - 8:00p.m.  
Nov. 23rd, 2015  
Drop In & Create  
Something Beautiful!!!  
210 Main Street  
McBride  
250-569-7230  
[thepurpledoormcbride@outlook.com](mailto:thepurpledoormcbride@outlook.com)

**THANK YOU**

McBride Secondary's Live Different Group would like to thank everyone that donated to the bottle drive - it was a success! We have more fundraisers coming up soon. We will be working the concession at all the Roundhouse Performances, goodies and beverages, cost are by donation. We will also be having a Gift Wrapping Room at the annual McBride Secondary Christmas Craft Fair. Have your craft fair purchases of the day wrapped or bring in other gifts you have purchased from other places to be wrapped. Many wrapping styles available or if you need it to be boxed and wrapped for shipping - we can do that too! The cost is by donation. There will be a Silent Auction in the room also. Come in and check out the items! If you have ordered a poinsettia or greenery from us you will be able to pick it up there at the fair. Please contact the school if you have a job that needs to be done and you would like to donate to the trip. Thank you again to those that have contributed to our fundraisers or have sponsored an individual to go on this trip.  
**On behalf of Vernon Pawloske and the Library and Museum Boards,** we'd like to thank everyone who contributed so generously and donated to Vern's Hike & Bike endeavour last June. With your support, Vern raised over \$7000 for the library and museum!!! We are overwhelmed by Vern's efforts and appreciate the many ways the community supported him. He far exceeded his goal!

**LIBRARY NEWS**

**Seasonal Crafts for Kids.** Saturday, November 21st, 2-4pm. Kids, stop by after the Craft Fair to make lanterns and elf attire to bring to the Festival of Lights! Can't make it? We'll have another go Tuesday, November 24th at 3pm.  
**Book Discussion Group.** Thursday, November 26th at 1:30pm. This month's theme is "Based on the Book". Read the story then watch the movie, and tell us what you think! All welcome!  
**Free Legal Advice Clinic.** Tuesday, December 1st at 7:30pm. Hosted by RVSS and the Library. Legal questions? Come chat with Barrister Jesse Stamm via Skype. Free, private 15 minute sessions available. Call Penny at 569-2266 or Naomi at 569-2411 with questions.  
**Lego/Minecraft Club.** Ages 5+. Wednesdays at 3:00pm. Lego, Minecraft, Crafts & Games.  
**Tuesday Night Jam.** 7pm in the Annex. Like to play rock, bluegrass, folk and more? Come meet with local musicians and learn new music. Contact Dave Marchant at 569-2569 with questions.  
**Fibre Arts Group.** Thursdays at 10am. The group that previously met at Odds & Ends is now meeting in the Annex. Bring your knitting, crochet or needlework project and come hang out!

**BUY, SELL, RENT & MISC.**

**For Sale-1983 2 Horse Trailer \$1,800.** 1992 Chevy Pick 144000km, 1500, awesome 350 engine. \$5,995 Ph:250-644-7717**For Sale-84" 3-point hitch "Allied" snowblower for tractor.** New price over \$4000. Sell for \$1800. Call Reg Marek at 250-968-4346**For Sale-7 month old bull calf (7/8 Red Angus 1/8 Simmental) \$ 2000.00.** Call 250-968-4474**For Sale-IKEA couch with removable black slip cover \$40.00.** Phone 250-569-3388**For Sale-Bausch+Lomb 15-45x60 Elite spotting scope \$350.** Leupold 30x60 spotting scope \$300. Browning camo lined gortex bib overall 3XL, camo jacket 2XL, browning logo cap, all for \$100. Propoint 17" gold quick release drive socket and colour coded socket set \$40. New Jet 1/2 ton mini-mite ratchet lever hoist. \$150. New Bushnell Discover 10x42 binoculars \$250. 250-569-3380**Moving Sale:** Two mountain bikes, adult, \$75 each. Fine wolf skin with mask \$1400 obo. Single axle trailer Ubit roadworthy, \$600 obo 250-569-0351**For Rent- 3 Bedroom House on 4th Ave. \$500/month plus utilities.** Phone 250-569-3374 or 250-569-7310**Wanted-2 double or larger beds, microwave, dressers and utensils.** Phone 250-569-2266**For Sale-Duramax vinyl weatherproof storage shed 8 x 10.5'. New condition on heavy pallet base. \$1000.** Phone 778-258-0353**For Sale-4 Goodyear Wrangler AT/S LT275-65R18, studded, 80 percent left. \$400** Ph:569-7769**For Sale-5 young goats. 3 doelings and 2 bucklings.** \$2.25/lb live weight with a package deal available. Also one 3 yr. old Alpine cross doe and 1-1/2 yr. old proven Oberhasli billi for sale. 250-569-7800**For Sale-2003 Toyota Tacoma. Green, extended cab, 4 cyl auto, 165k. clean, new battery & exhaust system, extra set of tires on rims. Winch, locking canopy, boat rack, electric boat loader, 10' boat. #13,000 OBO. Contact Mick @ 250-968-4332**For Sale-2007 Pontiac Vibe, 230,000 kms. Comes with summer & winter studded tires. Very good condition and ready for winter.** \$4000 OBO. Call Sharon Stearns 250-968-4544**For Sale-Push type lawn mower, 15" cut, \$10.** Wheeled garbage can, \$4. Older, orange secretary's chair, \$4. Contact D. Simpson 250-569-3343**For Sale-13 Lambs, males & females. 5-7 months old, ready to go any time.** Please call Lisa 1-250-553-2365**Wanted:** Chest Freezer, leave message at 569-0311**For Sale-RSF Wood Furnace,** good for garage or green house \$200, Propane cook stove with oven, needs no electric \$200 Ph:250-569-2488**For Sale-Used older BodyBreak 218 Elliptical Trainer. \$50.** Phone 250-569-3110**For Sale-Sticke mower, restored. \$600 obo.** Ph# 250-569-0351**For Rent-1 bedroom apartment across from hospital. \$550 & \$600 a month. N/S, N/P, Fridge/stove included.** Call 250-569-0208**For Sale-Jackson Figure Skates Size 5 (\$30.00) worn twice.** Call 250-569-3210 or text 250-569-7484**For Sale-Hella rallye 3000OFF driving lights, new, asking \$200 for pair. 100 ft. x 3/8" capacity hand crank air hose reel, new, asking \$50.** Phone 250-569-3380**To place an ad call 569-3110, Fax 569-0220 or drop info at 455 King St.****

**Important Phone Numbers**  
EMERGENCY ..... 9-1-1 Gov't Serv. BC. 250-569-3760  
R.C.M.P. .... 250-569-2255 Village ..... 250-569-2229  
Hospital ..... 250-569-2251 Reg'1 Dist' ..... 1-800-667-1959  
Health Unit ..... 250-569-2251 Home Support ..... 250-569-2266  
K to 7 School .. 250-569-2721 Food Bank ..... 250-569-3186  
High School ..... 250-569-2295 Fire Hall ..... 250-569-3117  
School District 57 Dental Office The Little McBride Paper  
1-800-256-7857 250-569-3434 250-569-3110  
Report Forest Fires - 1-800-663-5555

**Take a Break in McBride...B.G.'s Friendliest Town!!**  
Via-Rail Schedule viarail.ca Phone 1-888-842-7245  
Going West - Sunday, Wednesday & Friday...2:44pm  
Going East - Monday, Thursday, Saturday...1:48pm  
Discounts for 1 or 3 days advance booking.  
Inquiry B.C.-1-800-663-7867 - For Toll Free Calling to Provincial Numbers ...  
Dial this Number 1st and ask operator to connect you to provincial department.

**SNOW REMOVAL  
& T INDUSTRIES**  
WE CAN'T STOP IT FROM COMING, BUT  
WE CAN KEEP IT OUT OF YOUR WAY!  
DARVIN 250-569-7758 or 7050

**WELCOME  
TO HOME**  
Antiques & Giftware  
SANDWICHES, WRAPS & SOUP  
NOW AVAILABLE  
~IN A RUSH?  
CALL AHEAD 250-569-0215  
OPEN MONDAY-SATURDAY 10:00AM-5:30PM

**CO-OP**  
Vanderhoof & Districts  
Co-operative  
Association  
DRIVER SALES REPRESENTATIVE  
For Commercial and Farm Personal Contact  
where high level of customer service is Job One.  
**Delivering Fuel East to McBride**  
Greg Belshaw  
990 Railway Road  
Prince George, B.C.  
Toll Free 1-866-309-2667  
Home 250-963-9011  
Vanderhoof Head Office  
Phone 250-564-3488  
Fax 250-567-4490  
Cell 250-565-8436

**COPPERSTONE  
HOMES LTD.**  
Licensed Residential  
Home Builders and  
Renovators  
NEW HOME WARRANTY  
Dwayne 250-569-7040  
dwayne@copperstonehomesltd.com  
Cody 250-569-4489  
cody@copperstonehomesltd.com

**PEPSI KING CANS**  
473 ml ~ 2 for ~ **\$2.50**  
**POWERADE**  
946 ml ~ 2 for ~ **\$4.00**  
**HERSHEY KING SIZE  
BARS**  
62.87 g ~ 2 for ~ **\$3.50**  
**Husky**  
569-2441

**McBride AG Foods**  
569-0140  
**FRESH FISH FRIDAY!!!**  
This Week  
• Cod  
• Steelhead  
OPEN Mon.-Thurs. 6:30am-6pm, Fri. 6:30am-7pm,  
Sat. 6:30am-6pm, Sun. 9am-5pm

**HORSESHOE LAKE  
VENTURES**  
250-569-0075  
100 Mountainview Road  
Small Engine Repair and Servicing,  
and Agricultural and Industrial Equipment  
Repair and Servicing.  
WE CARRY Fencing Supplies, Auto Parts,  
Agricultural Equipment Parts, Misc.  
Hardware, Lawn and Garden  
Equipment and Parts,  
Small Engine Parts, and Tires.  
Certified dealers of  
Arrens lawn & garden equipment  
**WINTER TIRES  
HAVE ARRIVED!**  
Various common sizes in stock,  
free mount and balance with purchase.

**WINTER TIRES  
HAVE ARRIVED!**  
Various common sizes in stock,  
free mount and balance with purchase.





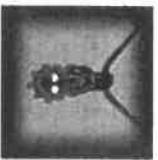
**NEIGHBOURHOOD PUB**

250-569-0101  
600 - 1st Ave.  
11am - 11pm  
Monday - Saturday!

**Order your HOLIDAY PARTY TRAYS**  
Contact Rosanna for further information  
gigglingirl16@hotmail.ca

**House of Jasper Silver Studio**

is re-opening on  
**Sunday, November 29,**  
**11:00 -3:00**



\$400 value

Visit our studio between November 29th and December 20th to enter the draw and you could win this 10K yellow gold, blue topaz & diamond pendant.

**WE ARE OPEN**  
Fri Sat & Sun 11:00am - 3:00pm

No purchase necessary to enter the draw. The winner will be notified on December 23, 2015.

**COMMUNITY ANNOUNCEMENTS**

**Community Christmas Day Dinner...** Please join us on December 25 at 4p.m. in the Evangelical Free Church for a FREE Turkey Dinner. No reservations necessary. Volunteer help and cooks needed (call Betsy 250-569-3386). ~Sponsored by Community members and Churches of McBride.  
**McBride Pickleball** - McBride High School gym at 7:00pm and continue every Wednesday that the school is open. For information about Pickleball contact Sharon Schiefelbein 250-569-2583.

**Festival of Lights / Late Night Shopping**

November 27, 2015 - Festivities will begin at 6pm with Santa Claus parading down main street lighting the businesses along the way! Enjoy your evening wandering around to the local businesses that will have some great deals and draws - details next week! Grab a bite to eat - the "Live Different" group will be cooking up a storm - no need to cook dinner! Santa will be at the Elks Hall for pictures following the parade! Hot Chocolate will be provided by the Chamber of Commerce at the Elks Hall and Carolling will be heard throughout the streets! We have a great event planned to start off your commitment to "Shop Local" this season with businesses staying open late for your shopping convenience - contest runs Nov. 27, 2015 - Jan. 15, 2016 - Shop More to increase your chances of winning!

**MCBRIDE SECONDARY MOVIE NIGHT**

The Rockies Traverse - McBride to the US Border - the movie on WEDNESDAY, NOVEMBER 25, 2015 at 7:00PM. Tickets at the door - \$10. Proceeds to McBride Secondary's Live Different group (Traveling to Mexico in 2016 to build a home for a migrant farm family.) Come watch the incredible story of Will Gadd & Gavin McClure, two paragliders who flew a world record paraglide journey from McBride's Teare Mountain, over Mt. Robson and down Kinbasket Lake and the Rocky Mountains to the US border - 650km in 35 days! Also screening - short films and videos by Robson Valley adventurers and film makers!

**McBride Thrift Store**

is beginning its display of Christmas Items - Tuesdays & Fridays, 1-3pm. Come in and check out the bargains.

**CHAURCH NEWS N' THINGS**

**Anglican United Church - Downtown Thrift Store** on Dominion Street. Clothes and Household Goods. Open: Tues. 1:00-3:00 & Fri. 1:00-3:00 • **Dorcas** is OPEN Tuesdays 1pm-3pm. Contact number 569-2479 Terri or 569-4031 Carol • **Foodbank** contact number is 569-3186 • **Seventh-day Adventist Church-Meet** Saturdays at 9:30 & 11am. and Wednesdays at 7pm. Phone: Ph: 569-3370 • **Memorite Church-Meet** Sundays 11am and 7:30pm & Wednesdays at 7:45pm Ph: 569-7297 • **Mountain Chapel (PAOC)-** Sunday School & Adult Classes-10am, Services-11:10am. Ph: 569-3350 • **Anglican United Church-441** Dominion Street. Meet Sundays at 10:00 a.m. Phone 569-3206 or 569-3386 • **Evangelical Free Church-Worship** Gathering at 10:30am. Ph: 569-2378 • **Robson Valley Christian Centre-Meets** in home Sundays 11am, Dunster Ph: 968-4335 • **St. Patrick's Catholic Church-Meets** Sundays at 11:00am. Ph: 569-2606. Call to Confirm.

**Take a Break in McBride...B.G.s Friendliest Town!!**

**REGIONAL DISTRICT**  
of Fraser-Fort George

155 George Street, Prince George, BC V2L 1P8  
Telephone: 250-960-4400, Toll Free 1-800-667-1959  
Fax 250-963-7520, Web: www.rdffg.bc.ca

**Robson and Canoe Valley Rec Centres**

Admission Rates  
(prices shown include tax)

Age:	Drop-in	Season	State Sharpening
Under 18 & Seniors	\$2.00	\$42.05	Hockey Skates \$3.65
Adult	\$2.50	\$48.90	Figure Skates \$4.55
Family	\$4.70	\$94.05	Skate Rental \$1.30
Parent & Tot	\$1.95 per tot (parents skate for free)		

Full-Gear Rec Hockey is \$8 or Goldpass/Season State Pass  
Skiptime is open to both youth and adults  
for shooting and passing practice.

**HELMETS AND GLOVES ARE MANDATORY FOR ALL ICE SPORTS**  
EXCEPT PUBLIC SKATING

Ice Rentals available for birthday parties and special events!  
In Velmont call 250-566-4740 In McBride call 250-569-3360

**FITNESS**

FR PR:	Drop-in
Students & Seniors	\$2.75
Adult	\$3.50
Family	\$8.55

FR PR Passes:	1 month	3 mos.	6 mos.
Students & Seniors	\$18.70	\$36.75	\$64.65
Adult	\$32.45	\$77.45	\$128.55
Family	\$45.20	\$115.95	\$203.35

FR PR Gold Passes	6 mos.	1 year
and Canoe Valley Rec	\$76.00	\$156.05
Students & Seniors	\$124.75	\$249.40
Adult	\$159.05	\$312.05

Robson Valley Rec Centre	Conversion/Out
weekly and 3 on 3 basketball	Senior/Student \$7.45/6hr
Student & Adult	\$10.20/hr
All Adults	\$12.60/hr

**WINTER SCHEDULES FOR RECREATION CENTRES**

	6	7	8	9	10	11	12	1	2	3	4	5	6	7	8	9	10	11
<b>Sun</b>					10:00 - 1:30 Skiptime					2:00 - 3:30 Public Skating								
<b>Mon</b>					10:00 - Noon Parent & Tot					Noon - 3:00 Skiptime								
<b>Tue</b>					Schools					1:00 - 2:15 Cheap Skate								
<b>Wed</b>					10:00 - Noon Parent & Tot					Noon - 3:00 Skiptime								
<b>Thu</b>					Ice Maintenance													
<b>Fri</b>					11:00 - Noon Parent & Tot					Noon - 2:30 Skiptime								
<b>Sat</b>					10:00 - 2:30 Skiptime													

	6	7	8	9	10	11	12	1	2	3	4	5	6	7	8	9	10	11
<b>Sun</b>																		
<b>Mon</b>					10:00 - Noon Parent & Tot					Noon - 1:30 Adult Puck-Off								
<b>Tue</b>					Schools					Noon - 1:30 Adult Puck-Off								
<b>Wed</b>					10:00 - Noon Parent & Tot					Noon - 1:15 Adult Puck-Off								
<b>Thu</b>					Ice Maintenance					Schools								
<b>Fri</b>					10:00 - Noon Parent & Tot					Noon - 1:30 Adult Skate								
<b>Sat</b>																		

**TANGLED TWINESEL**  
A Christmas Shopping Opportunity

Come shop local and avoid traffic and lineups.  
A direct sales/home based business Fair  
Sunday November 29  
1-4 at the McBride Legion,  
801 4th Ave



(MIKE & VONDA)

PAINTING & DECORATING  
COMMERCIAL & RESIDENTIAL  
~QUALITY WORKMANSHIP~

~30 YEARS EXPERIENCE / FREE ESTIMATES~  
ALSO OFFERING: CERAMIC TILING  
HOME 250-569-2642 CELL 250-569-7169

**BIRTHDAY WISHES**  
NOVEMBER 18-25

Amy von der Gonna, Greg Miskie, Lois Marr, Megan Sansom, Kevin Rhodes, Nelson DeFriars, Astrid Frazier, Ben Davis, Kathy Molendyk, Betsy Long, Marmoonna Diwiel, David Salayka, Ron Kent, Hal Anderson, Sandra Osterberg, and to anyone else we missed, Happy Birthday!

5. Both the library and museum boards continue to fundraise for the purchase of 521 Main Street through various events.

#### **Referendum, Feasibility Study, and Matters Relating to the status of 521 Main**

Working with the Regional District, we are moving forward with a feasibility study to address the need for sufficient space for the museum/ library to operate out of through the introduction of a new taxable service from the Regional District. The feasibility study will include a general review of all relevant information including identification of all short and long-term costs to operate and manage the service and a summary of the benefits of the proposed service. Should the Regional District Board approve the feasibility study, a referendum will be conducted this coming spring (dates to be determined) to allow residents to have their say and indicate if they are supportive or not of having a new taxable service from the Regional District to pay for a facility the library/museum can operate out of.

Through the feasibility study, we will continue to explore all options for suitable space. At this point, 521 Main Street appears to be the best option. To ensure 521 Main St. remains available in the event of a successful referendum, the Regional District Board will consider an offer to purchase the building. The Offer to Purchase is subject to a successful referendum, meaning if the matter is voted down in referendum, the building will not be purchased.

In the interim, the library and museum have a signed a temporary lease agreement for the use of 521 Main Street for the period of November 1, 2015 to May 31, 2015. The temporary lease agreement will allow us to utilize the space for a variety of workshops and activities and provide a more economical storage location for our museum artifacts and images that require an efficiently heated space.

#### **Where we are going:**

There are still many questions to answer: What will this cost? What will this do to my taxes? What will happen with the current library property? How long with the project take? What will the social, economic, and educational spin-offs be?

We continue to work on these questions with the support of the Village Council and Regional District staff through the feasibility study. We will have answers and meet to discuss those answers before a referendum takes place. There will be more questions - and we'll work on finding answers for those too.

This is NOT a "done deal." There are still a number of milestones to be met before any voting action can be taken.

1. The Committee of the Whole will complete the feasibility study to be brought forward to the Regional District Board by December 31, along with the conditional offer to purchase. The Regional District will consider authorization to proceed to a referendum.
2. Public meetings will be held prior to the referendum to provide detailed information on the establishment of the new service, including costs, implications and benefits. These would be held late March to early April.
3. A referendum will be held. Exact dates to be determined.
4. If the referendum is successful, bylaws are returned to the Regional District Board at their next meeting for adoption, and the Offer to Purchase 521 Main Street is completed.

So, that, in a nutshell, is where we were, where we are, and where we are going.



## **Project Update – Library/Museum Expansion**

**Copy of presentation made to Village Council by Joel Zahn, November 10<sup>th</sup>**

#### **History**

Since 1967, the McBride Library Association has operated the library at our current location. In 1986 the library and museum boards, together, successfully applied for a grant to expand the building. Since then, both entities have been jointly providing library and museum services to the McBride area from our location on Dominion Street. Through the years, the organizations have grown to meet our community's changing needs, and we have endeavored to do that in space that is limited by size, age and condition. For years, we have explored solutions to expanding our facilities, including rebuilding at our current location, but the cost has always proven prohibitive.

When the building at 521 Main was listed for sale about four years ago, the group began to explore whether it could be a viable option for our expansion needs. At the listing price, it was more fiscally responsible to buy and renovate 521 Main Street than it would be to demolish the current facilities and rebuild. The groups undertook a joint effort in a variety of fundraising strategies (and still do) in order to fund expansion.

In 2013, a working group consisting of the Boards from both organizations and the Village Council and Regional District was established. The group was tasked to determine how the library and museum could acquire larger, more up to date facilities, what options were available, and property taxation and zoning issues.

The group sought ways to identify and cover increased costs that would come from relocating to 521 Main and ensure the financial sustainability of the project.

After the November 2014 Local Government elections, the committee was re-established and committed to the goal to find a new improved facility from which the museum and library could offer programming for the community.

#### **Where we are today**

The Committee of the Whole has accomplished a number of things in our effort to move forward with getting the space we need for the Library and Museum.

1. We have received a letter of support in principle from the Village Council which allows us to seek and write infrastructure grants.
2. We have received letters of support in principle from other community organizations, including the McBride Chamber of Commerce
3. Using unrestricted fund raising monies, the Valley Museum and Archives Society has purchased 2 empty lots adjacent to 521 Main Street. These properties will be used for exhibit and green space should we be successful in acquiring 521 Main Street. Should that not occur, these two properties could be used to build a new building. Of course, the construction of a new structure would cost significantly more than purchasing a pre-existing building.
4. Restricted fund-raised monies continue to be held for the sole purpose of purchasing the building.

# CRAFT FAIRS



McBride Community Forest  
Corporation  
Seeking Advisory  
Committee Volunteers

*Carrier License Purchase Review*

**Committee Terms of Reference**  
The Carrier Advisory Committee will work with B.A. Blackwell and Associates to assess the viability of the current offer and area. The Committee will provide recommendations to the MCFC Board of Directors on the long term benefits and risks of the current package and propose alternatives as necessary.

**The MCFC is seeking 3 - 4 volunteers for the advisory committee who:**

- Have knowledge of the proposed area including the history of harvesting, existing roads and bridges infrastructure, access, trapping, non-timber forest resources and recreation.
- Have experience working collaboratively as part of a group.

• Are willing to prioritize the best interests of the community and the long term sustainability of the community forest in discussions and recommendations.

**Expression of Interest**

Send your qualifications and expression of interest to Jeff McWilliams at [jeff.mcwilliams@telus.net](mailto:jeff.mcwilliams@telus.net) or to the MCFC, PO Box 519, McBride, BC V0J 2E0

N Y S M D S G S F C C H E T L B  
R E F T L O S I O H D A L V  
L W I L O E N M V P R A B A R  
B U I G N C M A T E I M L M G  
S K S I H U C K P T J S E E S N  
S T S T N B G I X E T M S T I  
Q U F I F V O N L M O P U K  
B E T A N I S U I G A H C F A  
D Y M O R U G S R R S G S F B  
Y R E V O C S I D S E U B E S  
X T N E S S E R P I L P H M R H  
H O L I D A Y S A P C Q T S O  
T A L L E N T Y C O P K D G A P  
A R T S J O I T E R S L L A T S G  
D M F I O L T E N H L L A P F

ARTS LOCAL  
BAKING NEIGHBOURS  
BUSINESS PRESENT  
CHRISTMAS SHOP  
COMMUNITY SKILLS  
CRAFTS SMALL  
DISCOVERY STALLS  
DONATE STOCKING  
GATHERING STUFFERS  
GIFTS SUPPORT  
GIVE TABLES  
HOLIDAYS TALENT  
HOMEMADE

**Take a Break in McBride...B.G.s Friendliest Town!!**