

MCBRIDE MOVIES & MORE

569-0123

MONDAYS & TUESDAYS...
ALL TOP 100 AND FLOOR MOVIES



75¢ EACH

WEEKENDS - KIDS RENT FREE!
UNIQUE CHRISTMAS GIFTS AVAILABLE!

More NEW RELEASE Copies
now available

GET YOUR
MCBRIDE MOVIE BUCKS

SEE IN-STORE FOR DETAILS

MONDAY TO SATURDAY → 11:00AM-9:00PM
SUNDAY → 11:00AM-6:00PM



The Willow Heart

Christmas Shopping Hours:
Wed - Thurs. - Sat.
10:00a.m. - 5:00p.m.

- Lots of Great Gifts
- Gift Certificates Available

Other Shopping hours are
Welcome please call 569-3310.

East of McBride @ 1630 Koeneman Rd.

Advantage Insurance Services Ltd.

Rosemary L. Hiruby, CAIB
250-569-2264

Season's Greetings

RnR

Parts - Repairs

Snowmobile Rentals

569-2354

1-877-868-7288

WINTER STOCK

NOW IN

Just in time for Christmas

Goggles • Gloves • BalACLAVAS • & More

Avalanche Gear available for Rent

Snowmobile

Safety Course now

available with

Certified Instructor

GIFT CERTIFICATES AVAILABLE

Open till 9:00pm until Christmas

OPEN 8:30am to 9:00pm

7 Days a Week



PHONE #
569-2326

NEW HOURS Monday - Saturday 9am to 7pm Sunday 9am - 6pm
WEST BEST OLIVES - select varieties - 398 ml - 2 for ----- **\$3.00**

WELCH CONCORD GRAPE JUICE - 1.82 L ----- **\$4.49**

WHISKAS DRY CAT FOOD - Original & Seafood - 2 kg ----- **\$6.49**

12 Days of Christmas Draws are back!
LOOK FOR OUR EVERYDAY VALUES and our UNADVERTISED SPECIALS

STEDMANS

V & S

377 Main 569-2415

Check out our selection of

- Boxed Christmas Cards
- Gift wrap & decorations
- Boxed Chocolates & candy
- Streamer GT Satellite Radio - \$109.99

Gift Certificates available
OPEN SUNDAY 11AM - 3PM

FREE The Little FREE

McBride

Paper



Serving BC's Friendliest Town and Area!!

For the week of *Wed., December 14th, 2005*

TODAY!!!

The McBride Figure Skating Club is having their CHRISTMAS EXHIBITION SKATE. Come out and see your local skaters perform. Wednesday, December 14th at 5:00 p.m. Surprise Visitor, Goodie Bags, FREE ADMISSION!!! Robson Valley Junior Academy is presenting a Christmas program entitled, The Miracle of Christmas. This musical drama production will be performed on Wednesday, December 14, 2005, at 7:00p.m. It will Take place at the McBride Seventh-Day Adventist Church. Please bring yourselves, and your friends and family. (1075 Lanning Pit Road).

VARIETY NITE

Grade 12 - Variety Nite - Thursday December 15, 2005 at 7:00p.m. at the Highschool. Prices - * Adult \$5 *Students & Seniors \$3 * Family of 4 \$13 *Kids under 5 - Free. For more information call Chantelle Miskie 569-2672 or Kelly Sluggett 569-3122. Tickets are available at Stedmans and at the door. Everyone Welcome.

ANNUAL CHRISTMAS HYMN SING

Everyone is Invited to Attend the Annual Christmas Hymn Sing at the McBride Mennonite Church on Mountain View Road. December 18th at 7:30 p.m.

WHISTLE STOP GALLERY

The Whistle Stop Gallery Presents: Beading with Margaret. Monday December 19, at the Train Station. Make a craft for Christmas. Under 8yrs. 10:00a.m. - 12:00 / 8+yrs 2:00 - 5:00p.m. **Children under 5 must be accompanied by adult. \$5 per craft - make as many as you like. To preregister or for more information please call the Gallery at 569-8891.

GIFT WRAPPING

Gift Wrapping Services All your gifts wrapped at your home. Travel fee and donation for wrapping. Phone for more information 569-0234.

COMMUNITY ANNOUNCEMENTS

McBride Big Country Snowmobile Association will be having a Meeting on December 15th at Ride N Hide at 7:30 p.m.

Dance Lessons are cancelled over the holidays and will resume on Thursday, January 12th at 7:45 p.m., Elks Hall. **Groups and Individuals** wishing to rent the Dunster Community Hall please call Faye Callas at 250-968-4332 for a booking. Thank you for your ongoing patronage.

THOUGHT

Why does someone believe you when you say there are four billion stars, but check when you say the paint is wet?

Elks/Royal Purple News

As usual the season has and will be busy for the Elks and Royal Purple with catering banquets or hosting dance lessons.

We have had a good group of young and older people coming to "Free" Dance lessons on Thursday nights. Nadine Showar has again generously donated her time and music. Doors open at 7:45 p.m., lessons begin at 8:00 - 9:00 p.m. and practice dancing will be from 9:00 - 10:00 p.m. Over the holidays the lessons will be cancelled but will start up again on Thursday, January 12th. Come out and have a good time!!!

Reminder to the members to bring a guest and exchange gift as well as your Secret Pal gift to the Christmas Party on Tuesday, December 20th.

We would like to thank the Volunteer Fire Department for their thoughtful gifts to the Elks and Royal Purple in appreciation of the Christmas dinner. We would also like to thank the McBride Figure Skating Club for the group picture of the figure skaters in appreciation to the donations (through lottery funding) over the past couple of years.

McBride Husky 569-2441

Greyhound Bus Schedule
Depart to East-12:10am Daily • Edmonton
Depart to West-6:10am Daily & 8:22pm Fri. Sat. Sun. •Prince George
Depart to South-Daily 12:15am or 9:50am Fri. Sat. Sun. • Kamloops

Please contact The Little McBride Paper with all coming events, news, trivia, comments, anything!! Ph:569-3110, Fax:569-0220, email:sgline3@telus.net, P.O. Box 441, McBride, B.C. V0J 2E0 or drop off at 455 King St. If we don't know about it, we can't write about it!!
-Scott & Susan Glines - Oscar & Broom

Take a Break in McBride...B.C.'s Friendliest Town!!

Health Heart & Home

Health Products, Gifts & Antiques

246 Main Street, McBride, B.C.

Ph: 569-9259 TOLL FREE 1-888-669-2559

Antiques *Gifts*

Vitamins & Minerals

Bulk Spices *Bulk Herbs*

SENIOR'S DISCOUNT

10% on all supplements and giftware
from Dec. 14 to Dec. 21

OPEN Daily till 5:30pm Friday till 6:00pm

POWERADE

710 ml

2 for **\$2.49** + dep. & tx.

LAY'S

230 - 245 gm

& DORITOS

XL 280 gm

2 for **\$4.00** + tx.

OPEN 24 HOURS

Employment Assistance Service

Robson Valley Home Support Society

NEED A JOB?

NEED A WORKER?

Contact Bob Thompson 569-2266

Funded by the Government of Canada

Canada

A.C. & T. CONSTRUCTION

JOURNEYMAN-CARPENTER

- New Construction • Framing •
- Renovations • Additions • Siding •
- Basement Development • Windows • Doors •
- Concrete Work • Roofing • Kitchens • Baths •
- Decks • Stairs • Drywall • Painting • Finishing •
- Drafting & Design ••

•• Home Repairs •• •• Odd Jobs ••
••Free Estimates •• Call Art
••Free Consultations •• At 569-2519

20% OFF
All Trimmer
Accessories
In-Stock
See In-Store
STIHL Saw
Specials

JNR Auto Services

569-2666

10% OFF
Oil Changes
till Christmas
Winter Radios
*Exhaust Pipe
Bending**Sirius Tires**Winter Pipe
Bending*

Stylin' cuts - colors - curls
by Sina

(c) 569-7279 (m) 569-0411

If you've been wondering what the old guy and I have been making in the workshop this year, come on over and have a look.

I'm having a sale in my home on Sunday, December 18th from 12-5pm.

There will be baking (my sisters are in on this), apple pies, bread and other yummy stuff. I have sewn up a small pile of quilted items - table runners, table toppers, place mats and wall hangings. Some are Christmas, some not. There are a few Angels looking for good homes. New this year I've made some Country lighted and non-lighted garland. Some are Christmas, some to be enjoyed all year. The old guy has some rocking chairs, some wooden bowls and his little carved boots.

So, there you have it. It's a One Stop Shop! Come on over and have a look. I'm now taking orders for potato/onion buns, poultig chairs (his & hers), hope chests, treasure chests (without the treasure I'm sorry to say), coffee and end tables and other pine furniture.

If you haven't seen these items and are interested, call me for a time to come over and see them. Karen Desormeau
#847, 5th Ave., McBride 569-2531



McBRIDE HOTEL
569-2277

PRESENTS...

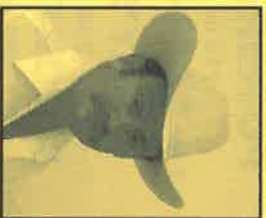
Live Music with

“NITTE OWL”

Friday, December 16

McBRIDE REALTY
CENTER LTD.

277 Main Street
P.O. Box 729
McBride, B.C. V0J 2E0
Bus: (250) 569-2719
Toll Free: 1-877-569-2735
Fax: (250) 569-2787
E-mail: rodney@mcbriderealty.com
www.mcbriderealty.com



Rodger L. Peterson
Owner Broker

Cabela's TROPHY PROPERTIES
Limited Liability Company

Rodger L. Peterson
Affiliated Broker for
Cabela's Trophy Properties LLC
Province of British Columbia, Canada

The Center of Real Estate Action in the Province of British Columbia

Kit's Heavy Hauling

For all your lowbedding needs in
the Robson Valley and Beyond.
(250) 569-7260 (250) 569-0116



233 Main Street
McBride, B.C.
569-2712

Your Neighbourhood Food Store

DELI

French Herb Salami - 100 g...\$2.29
Pepper Turkey Breast - 100 g...\$2.29

CHRISTMAS CARDS 50% OFF

Chicken Wings & Drumettes - \$2.69 / lb.
Family Pack..... \$2.99 / lb.
Pork Center Loin Boneless Roast..... \$2.99 / lb.
Purex Liquid Detergent - \$6.98
Mountain Breeze w/ Bleach - 3.8 L..... \$6.98
Coca Cola - 12 pack cans - 355 ml - 2 for..... \$7.00
Lays Chips - Assorted Varieties - \$5.00
245 g - 3 for..... \$5.00
Kicking Horse Coffee - \$12.99
Assorted Flavors - 454 g..... \$6.29
Maureen's Caribbean Rum Cake - 290 g..... \$4.99
Prawn Skewers - 4 for..... \$4.99
Korean Mandarin Oranges - 5 lb. box..... \$4.88
Fresh Ocean Spray Cranberries - 12 oz..... \$1.69
Organic Oranges - 4 lb..... \$5.99

BAKERY

Mini Strudel - 4 for...\$1.99
Portuguese Rolls - 6 for...\$1.49



Vanderhoof & Districts
Co-operative
Association

DRIVER SALES REPRESENTATIVE

For Commercial and Farm Personal Contact
where high level of customer service is Job One.

Delivering Fuel East to McBride

Greg Belshaw
990 Railway Road
Prince George, B.C.
Toll Free 1-866-309-2667
Home 250-963-9011
Vanderhoof Head Office
Phone 250-567-4488
Fax 250-567-4490
Cell 250-565-8436

COMMUNITY BIBLE STUDY

2nd Annual Community Bible Study
to Begin Again!!

Wendy & Garry Lowe invite you to an
old-fashioned Bible study every Tuesday night at
The Beanery, beginning November 29 at 7:00p.m.
We will be studying the book of Ephesians.
Come share a coffee and/or tea with friends, as we
study this important letter from Paul for our daily
lives and community. Every person is welcome.

McBRIDE CAFE

Daily Breakfast, Lunch & Dinner Specials

Thanks to all our customers for your
support in our first business year.

Merry Christmas and a Happy New Year

Take Out Available
Fully Licensed

We will be CLOSED
from December 24
to January 3



WAY SHOP LOCAL

Locally owned businesses provide substantial economic benefits to the community. For every \$100 spent locally, \$73 remains in the local economy. The only way to guarantee a prosperous future for our community is to ensure that we turn first to local shops and stores before venturing further afield.

A Cultural Alliance In B.C.'s North?

Funding Announced: The Central Interior Regional Arts Council (CIRAC) and project partners have received 2010 Legacies Now/Arts Now and matching funding to conduct a feasibility study about developing a cultural alliance in the north. Far-flung geographically, the cultural communities in the top two-thirds of the province may have more in common than they realize. Gail Hunt, Project Coordinator says, "We may be able to use this commonality to connect with each other to make a big statement about what makes us Northerners unique." "In the north, our arts, culture and heritage assets have scarcely been tapped, and yet they are a key element in the diversification of our cyclical resource-based economy. The first step in our study is to identify our cultural assets. We would like to invite: non-profit associations, local government representatives, business development agencies, arts councils, performers, artists, creative writers, businesses interested in developing cultural tourism opportunities, heritage facility operators, First Nations businesses and band offices, educational institutions, or anyone interested in developing our unique cultural identity, to participate in a survey." The economic benefits of forming a cultural bond and awareness might be realized through increased tourism, as the successful Okanagan Cultural Corridor alliance has already discovered. Cultural tourism is projected to have a huge (15% per year) growth (Canadian Tourism Commission). Hunt says, "By banding together to support and encourage each other, we can become part of that opportunity for growth. 'Clustering' like-minded assets raises awareness and has proven to be an effective marketing tool in business." Everyone who completes the survey will be rewarded with the study results as soon as they are available. The survey project, called "BC CAN" (Cultural Alliance North) is expected to be completed by mid-January, with the full report available in February. CIRAC believes it will discover that "arts" and "business" can go together in the same sentence. To receive the on-line survey, participants need to first contact: info@cirac.ca, or 250-562-0024, by December 30. **CONTACT: Gail Hunt - Project Coordinator, or Cathryn Sanchez - Research Assistant for more information.

BUY, SELL, RENT & MISC.

Wanted-Rebounder in working condition. Phone Sharon Griffith 968-4433•**For Sale-1998 Ford F150 4x4 Supercab**, 111,000 km. \$15,000. Phone 569-2471•**For Sale-4 Goodyear Tracker Tires**, P245/75R16 M+S. Used only 2 months last winter. \$350.00. Phone 569-3110•**For Sale-6 1/2 ft. dk blue Canopy**. Fits Nissan or Import Trucks. Very good condition \$250.00 o.b.o. Pr: Al 250-569-3210•**For Sale or Trade-** Diamond willow headboard (wall mount) (tung oil finish) \$1800, Diamond willow headboard, footboard & frame (natural no finish) \$1000, both are Queen size. Willing to trade for ATV in good working order. Contact Al 569-2602 or view at 907 4th Ave. •**For Rent-Mobile Home**, 3 bedroom, comes with appliances. \$500.00 per month. Phone 968-4385•**For Sale-6.5 Acres**, Commercial Property \$120,000.00. 5.1 Acres, Zoned RR1, \$75,000.00. Phone 569-8830•**For Rent-14 x 70 Mobile** for Rent on Dore River Rd. Propane & Wood Heat. Furnished if required. Pets welcome. \$450/month Ph:569-2471 / 98 Ford F150 4x4 Supercab. 111,000 km \$15,000 Ph:569-2471•**To place an ad here call 569-3110 or drop info at 455 King Street.**

LIVING WILLS

A man and his wife were sitting in the living room and he said to her: "Just so you know, I never want to live in a vegetative state, dependent on some machine and fluids from a bottle. If that ever happens, just pull the plug." His wife got up, unplugged the TV and threw out all of his beer.

Via-Rail Schedule

Phone 1-888-842-7245
Going West - Sunday, Wednesday & Friday...2:40pm
Going East - Monday, Thursday, Saturday...12:03pm
Seniors (60+) 2 for 1 is back. Must book 6+ days advance.

Important Phone Numbers

EMERGENCY.....	9-1-1	Forestry.....	569-3760
R.C.M.P.....	569-2255	Village.....	569-2229
Hospital.....	569-2251	Reg'l Dist'.....	1-800-667-1959
Health Unit.....	569-2251	Home Support.....	569-2266
K to 7 School.....	569-2721	Food Bank.....	569-3225
High School.....	569-2295	Fire Hall.....	569-3117
Dunster School.....	968-4414	Greyhound.....	569-2441
School District 57		The Little McBride Paper	
1-800-256-7857		569-3110	

Report Forest Fires - 1-800-663-5555

Inquiry B.C. 1-800-663-7867 - For Toll Free Calling to Provincial Numbers ...
Dial this Number 1st and ask operator to connect you to provincial department.

Take a Break in McBride...B.G.'s Friendfest Town!!

RELIEF FROM ACHES & PAINS

*BOWEN THERAPY**RELEXOLOGY**MASSAGE*
CALL MARGRIT 968-4432

THE HAIR SHOPPE

803 3rd Ave. - side entrance
We Carry JOICO Supplies

SASQUATCH Beauty Barn

Fully Licensed Esthetics
We will be CLOSED Dec. 21 to Jan. 2
1102 - 4th Ave. If you can't get a hold of me try
569-2294 stape@telus.net my Cell Phone @ 569-7229

Angels Say

When you smile at a stranger you
speak the language of angels.

Ande's Autocare Auto Parts

www.andesautoparts.com
289 Main Street, McBride BC V0J 2E0
Mon.-Fri. 7 to 7, Sat. 8 to 6,
Sun. 10 to 2
Del Fry / Lenny Stone
Tel: 250-569-2332
Fax: 250-569-2342
After hours 250-569-2332

HEARTLAND RESTAURANT

HELP WANTED

Part Time Cooks and Servers.
Apply in Person with Resume.

BOOK EARLY FOR YOUR CHRISTMAS PARTY!

Robson Valley Pet Hostel
Grooming & Boarding
Serving locally for 21 years
Ann Schwartz 569-3319 animal health technician



We are Full of Beans

225 gr. bags - for Home or Gifts! \$6.50

569-0133

PHYSIOTHERAPY

E. Kim Hammerstedt BPT

246 Main Street, McBride 569-0107

Power Saws • Lawn Mowers & Trimmers

Rototillers • Snow Blowers • etc.

SMALL ENGINE REPAIR

••SNOW PLOWING••

••Commercial Carpet Cleaner

Rental available•••

Call Don or leave a message
250-569-7888

Walvo Enterprises

820-1st Avenue Phone (250)569-0320

Website: <http://www.walvoenterprises.ca>

In-Store Christmas Specialists:
Spyder Victor II Paintball Package,
includes marker, JT Nvador mask,
10 oz CO2 tank, barrel plug,
hopper & elbow \$225.00 Save over
\$25.00 plus get first CO2 refill FREE!



HP Photosmart M415 5MP Digital
Camera and HP Deskjet DJ5940 Printer
Bundle Only \$279.99!

Beng DC E41 4MP digital camera \$199.99
Poker Party Package: Texas Hole 'Em Poker Tin,
Card Shuffler & Bar Master Deluxe \$89.99 Save \$10!
Mighty Mike Robot \$29.99
Floating Time Clock Hockey \$29.99
Collector Hunting Knives \$39.99
PC Games:

Ages of Myst \$19.99
Harry Potter & the Prisoner of Azkaban \$29.99
Quake II \$9.99 Plus Tons More!
Every \$5 you spend, you may enter our draw
for a Koss AM/FM Clock Radio.
Draw date December 24, 2005 at 2:00 p.m.
Open Sunday, Dec. 18 from 10-4 for all your
Christmas shopping needs.

**Tired of the hustle and bustle,
long lines and crowded stores?**

Looking for that special gift
for that special someone?

Give a gift that they will treasure for a lifetime and
show off your home town talent! Happy Holidays!

WHISTLE STOP GALLERY

*OPEN MONDAY TO FRIDAY TILL 6:00PM
THROUGHOUT THE HOLIDAY SEASON
*OPEN DAILY AT THE TRAIN STATION
(250) 569-8891



JENNY'S Shop N Wash
McBride
569-0095

Let Jenny's do your Christmas Baking
ORDER NOW

Gift Baking Baskets available
COME SEE

Egg Nog Latte - Peppermint Candy Latte

HOURS:

December 24 - **CLOSED**
December 25 - **CLOSED**
December 26 - **CLOSED**
December 27 - **CLOSED**
December 28 - 8am-3pm
December 29 - 8am-3pm
December 30 - 8am-3pm
December 31 - 8am-3pm
January 1 - **CLOSED**
January 2 - Back to Regular Hours

*"May your Holiday Season"
Be Blessed with Love*



Tuesday - 10 to 5 & 7 to 9
Monday & Thursday Closed
Wed. - 10-2 Fri. - 2 to 9 Sat. - 2 to 5
Cost of Internet usage - \$1.00 per half hour

<http://www.mcbridebc.org/library>

library@mcbridebc.org

241 Dominion St. (250)569-2411

Turn off the Tube and Read a Book

THINK ABOUT IT...

Why do banks charge a fee on
"insufficient funds" when they
know there is not enough?

ROUNDHOUSE

Cindy Church is one of the artists requested most for the Roundhouse. The reason is simple. She is a terrific singer. Originally from Bible Hill, Nova Scotia, Cindy spent 20 years in Western Canada (mostly Alberta) before moving to Toronto. Along the way, she perfected her sound and intimate, close-to-your-ear voice, which has a warmth and tone that demands attention. Whether it's old-style country, swing jazz, blues, rockabilly or pop, Cindy mixes musical genres with ease. This is your chance to see her at the Roundhouse. Sunday, January 15th 8:00 p.m. - \$20.00. Tickets available at Steadmans.

CHURCH NEWS N' THINGS

Anglican United Church - Downtown Thrift Store on Dominion Street - Mens, ladies and children's clothing -Open: Tues. 1:00 to 3:00 - Sat. 10:00 to 12:00-Dorcas is OPEN Tuesdays 1pm-3pm. Phone 569-3186-Contact number for the Foodbank is 569-3225-**Seventh-day Adventist Church-Meet Saturdays** at 9:30 & 11a.m. and Wednesdays at 7p.m. Phone: Ph:569-3370-**Mennonite Church-Meet Sundays** 11am and 7:30pm & Wednesdays at 7:45pm Ph:569-0445-**Mountain Chapel (PAOC)-Sunday School & Adult Classes-10am, Services-11am. Ph:569-3350-Anglican United Church-441 Dominion Street. Meet Sundays at 9:00 a.m. Phone 569-3206 or 569-3386. Hall Rental contact Dorothy Simpson 569-3343-**Evangelical Free Church-Sunday School @ 9:45 a.m. *Sunday Worship Service at 11:00 a.m. Ph:569-2378 or 569-8845 Pastor Dan Carlaw-Robson Valley Christian Centre-Meets in home Sundays 11am, Dunster Ph:968-4335-St. Patrick's Catholic Church-Meets Sundays at 11:00am Ph:569-2606. "Catholic Faith for Adults" inquiry class. Contact Sr. Olive.****

BIRTHDAY WISHES DEC. 14 - 20

Kelly Mortensen, Glenn Foster, Stefi McLean, Kim Cobb, Glory Vogel, Bernice Finnerty, Teri Smith, Dorothy Hewitt, Logan Ladouceur, Pete Barone, Laurie Smith, Gary McFarland, Rebecca Frazier, Craig Ryan, Paul Starlund, Dwayne Vause, Jason Wiltsie, Sasha Phillips, Keith MacMaster, Anita Turvey, Joy Marsh, Marian Dunn, Maria Teresa Caputo, Devance Cardinal, Cathy Wiltsie, Thelma Molendyk, Isabelle Bonneville, Janice Lipke, Teo Esser, and to anyone we missed Happy Birthday.

McBRIDE MEALTY

Well Men's Clinic odd Thursday evenings (except the 29th) drop in 6 - 8, appointments 8 - 10.

THOUGHT OF THE WEEK

Why do we press harder on a remote control when we know the batteries are getting weak?

Take a Break in McBride...B.G.'s Friendliest Town!!



I told you you weren't leaving without me.

FORREYER PRINTING & SIGNS

- TROPHIES
- ENGRAVING
- COLOR SCANNING
- T-SHIRTS
- PHOTOCOPIES
- CONFIDENTIAL FAXES
- OCCASIONAL CARDS
- INVITATIONS
- BUSINESS CARDS
- LAMINATING
- BINDING
- AND MUCH MORE
- CHECK US OUT FOR ALL YOUR **ITROPHY** NEEDS



Home of The Little McBride Paper
Scott & Susan Glines
455 King Street
Ph:569-3110
Fax:569-0220

THINK ABOUT IT...

How do those dead bugs get into those enclosed light fixtures?

Now Open
The Farm Store

Your local feed, tack, pet supply and western gift store

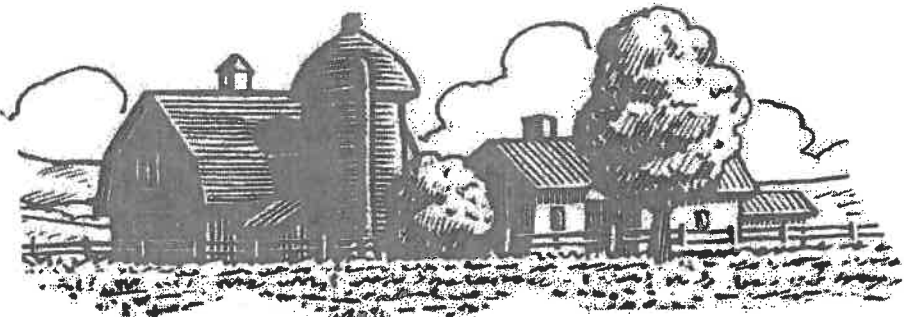
December's Special

Black Oil Sunflower Seeds

40lbs/18.1kg Bag

\$17.00

In stock 10 & 25 packs of RFID Ear Tags



Store Hours

Weekdays - 9am-5:30pm

Saturday - 10am-4pm

Store Address

1032 2nd Avenue

(country king building)

Phone -569-7203