

A.C. & T. CONSTRUCTION

JOURNEYMAN-CARPENTER

- New Construction • Framing • Renovations • Additions • Siding • Basement Development • Windows • Doors • Concrete Work • Roofing • Kitchens • Baths • Decks • Stairs • Drywall • Painting • Finishing • Drafting & Design ••

•• Odd Jobs ••
Call Art
At 569-2519

ROCKY'S

RENTALS & PARTS INC.
ATV Rentals

400 Polaris Sportsman & 500 Polaris Magnum

for Work or Play
"Ride the Best"

hourly, daily, weekly & monthly rates.

Locally Owned & Operated 250-569-0312



Imagine the Possibilities!

Cover-All Buildings-Okanagan

Ph: 250-835-4888
1-800-268-3768

www.coverall.net

COVER-ALL
A U T H O R I Z E D D E A L E R
C O N T R O L L E D B Y A M P H I B I O T E C H N O L O G Y I N T E R N A T I O N A L

IGA

233 Main Street
McBride, B.C.
569-2712

HOMETOWN PROUD

DELI Mastro Genoa Salami - 100g...\$1.99
Coleslaw - 100g...\$0.69
Macaroni Salad - 100g...\$0.69

CANNING SUPPLIES IN STOCK

- Wild Pink Salmon \$1.69 / lb.
- New Zealand
Top Sirloin Steak \$2.99 / lb.
- Assorted 10" Tropicals \$12.99 each
- Whole Watermelon \$5.99 each
- Banana Peppers \$1.29 / lb.
- Mimigo Tubes - 8x40g \$1.99
- Yoplait Fat Free
Basket Yogurt - 750g \$1.99
- Wonder Hot Dog or
Hamburger Buns - 12 pack \$1.99

BAKERY

Mini Danish - 9 for...\$1.99
Black Forest Rye Bread
454g loaf...\$1.49

HELP WANTED

Sandman Inn Requires Immediately:

- Full Time Waitress
- Part Time Waitress
- Prep Cook
- Part Time Cook

Please drop off resume at Front Desk.

TWILIGHT SPECIAL!

DEER MEADOWS GOLF RESORT

is pleased to announce that we are again offering our Twilight Special (starting at 6:00 p.m.) for Golf.

The special includes two green fees (unlimited golf) and a power cart for **\$30.00**

Come and eat in our licenced cafe before (or after!)

When? August 19 - 23, 2002

What time? 9:00 - 11:30 am daily

Where? McBride E-Free Church

Who can come? Children ages 5 and up
Cost? A smile and a desire to have fun!

You're invited to come for a great time of exploring our awesome God! There will be stories, puppets, crafts, games, snacks, and so much more! It's an experience that's "out of this world!" Blast off happens at 9:00 am on Monday, August 19th. Don't miss it!

FREE The little FREE

McBride

Paper



Serving BC's Friendliest Town and Area!!

For the week of Wed., August 14th, 2002

FALL FAIR 2002

This years main raffle includes a 1st Prize of a print from Glen Frear of Mount Robson valued at \$130.00, 2nd Prize is a Broom from the McBride Old Fashioned Broom Factory valued at \$50.00 and 3rd Prize is a Teddy Bear from Karen Desormeau valued at \$45.00. Raffle tickets are available at Stedmans, Country King and Rose Garden Boutique. At the Fall Fair we will have a Door Prize draw of a Gift Certificate from Heartland Restaurant plus other prize draws donated by Health, Heart & Home and Stedmans V&S. Get your Dance Tickets now (D) is "Pizzazz" from Stedmans or Country King. Tickets are \$10.00.

August 16 & 17, 2002 - *Exhibits accepted Friday, August 17 from 8a.m. - 2p.m. at the Elk's Hall. *Fall Fair Booklets are available at Country King and The Rose Garden Boutique. *Saturday - Exhibits open at 11:00a.m. to 5p.m. *Parade - Come out and join the fun at 10:30a.m on Saturday. For more information contact Linda McClinton at 569-0321 *Pet Show - Saturday Noon in the park. Ribbons will be awarded. Bring your pets to the town park. *Fashion Show - Saturday at 3:30p.m. at the Elk's Hall. Anyone interested in modeling their own fashions contact Linda McClinton 569-0321. Tea will begin at 2:00 before the fashion show at the Elks Hall. *Chevy! Sanson Award - for citizenship and community service. To be awarded Saturday at the Fashion Show. *Dance - Saturday Night at the Elk's Hall with "Pizzazz" Tickets are \$10.00 MUST BE 19 & OVER. Tickets are available at Stedmans & Country King. *1st Annual Chicken Exhibits.

COMMUNITY ANNOUNCEMENTS

Local Royal Purple Lady Appointed to Supreme Lodge Executive. Dawna Hickerty was appointed as National Judiciary Chairman at the Royal Purple of Canada 78th Supreme Lodge Convention in Yellowknife, NWT. This appointment is made by the Supreme Executive from Royal Purple Ladies from all across Canada. Dawna previously served as the National Lodge Development Committee for 2 years - the most recent as Chairman. Locally Dawna is Secretary for McBride Royal Purple #112 & McBride Elks #247 & is really proud to be a part of the 3rd "joint" Lodge to be formed in Canada. Besides working for our local community and raising funds for deaf detection and stuttering in children, Royal Purple allows personal growth as a woman - we are "the best female organization in Canada." Congratulations Dawna, we are proud of you!

The local members have been enjoying a quiet summer after a busy year but we are working on a couple of events. As you know the upkeep and maintenance of our hall and what we can give back to the community depends on our catering service. Already over the summer we have catered to the Forestry Reunion August 17th and will be catering the McBride Legion Zone Mtg. the weekend of Sept. 27th. To get the new year off to a great start we will be holding a barbecue for members, their families and guests at our first Mtg. Sept. 3rd. If you are interested in being a member or finding out about our organization, come to a meeting. Meetings are every 1st & 3rd Tuesday 8pm, Elks Hall.

Now showing: KIM BRANDT: NEW PAINTINGS Come and see exciting new paintings by a Robson Valley artist, and meet the painter at an opening reception Friday 7:30 to 9 p.m. at the Museum and Library. Everyone welcome! Also open during library hours. Free Internet Training at the McBride Public Library. Jerred Bodan will teach you to quickly find what you need on the Internet. One on one sessions. Any general computer questions. For appointment before Friday 30th August phone the library @ 250-569-2411. Baby Shower for Arlene & Aleiya Websdale. Thursday, August 22 at 7:00 p.m. 1490 Eddy Road (Amanda Moore's). Families - Haying Yard Sale on August 20th 11am to 4pm at 845 4th Avenue. All sorts of items.

LOCAL MARKETS

Dunster Farmers' Market - Saturdays 10:00am to Noon from July 13th to September 14th. Call Pete 968-4334 for more info. McBride Community Market - Local made or grown produce & products or used household items. Every Friday until Sept. 6, from 12 noon to 3pm in the McBride Village Park. \$5.00 per table, \$1.00 per table for kids 12 & under. Come one, come all, to the community market. For more information call Dorothy Stewart at 569-2436 or Joyce Godfrey 569-2427.

Greyhound Bus Schedule

Country King
Depart to East-9:50am & 2:35am • Edmonton
Depart to West-8:05pm & 5:40am • Prince George
Depart to South-9:50am • Kamloops

Important Phone Numbers

EMERGENCY	9-1-1	Forestry	569-3700
R.C.M.P.	569-2255	Village	569-2229
Hospital	569-2251	Reg'l Dist'	1-800-667-1959
Health Unit	569-3765	Home Support	569-2266
K to 7 School	569-2721	Tourist Booth	569-3366
High School	569-2295	Fire Hall	569-3117
Dunster School	968-4414	Greyhound	569-2570
School District 57	1-800-256-7857		

The Little McBride Paper.....Phone 569-3110 or Fax 569-0220
Inquiry B.C.-1-800-663-7867 - For Toll Free Calling to Provincial Numbers ...
Dial this Number 1st and ask operator to connect you to provincial department.

Take a Break in McBride... B.C.'s Friendliest Town!!

SASQUATCH

Beauty Barn

OPEN

TUESDAY - SATURDAY 10am - 5pm
Fully Licensed Esthetics & Hair Salon
1102 - 4th Ave. Call 569-2294 for Appointment

RIDE N HIDE RECREATION ATV RENTALS & TOURS

Phone 569-2354 Toll Free 1-877-868-7288
903 - 2nd Avenue

INFANT & TODDLER DAYCARE SPACES AVAILABLE!

McBride Daycare Society is happy to announce that we will be opening a program for children under three (infants & toddlers) starting September. Full and part-time spaces available. Please phone 569-3258 for more information and to put your child on the waiting list.



VALLEY MUSEUM & ARCHIVES

Opening reception:

KIM BRANDT: NEW PAINTINGS at the museum and library building Friday August 16
Everyone Welcome!

Snowy River Farm Supply

*28,000 ft. Baling Twine
\$25 per Box*

Hay & Silage Tarps
(above items in stock)

3338 Plantway Rd. McBride Ph:569-0115 Fax:569-0124
Just minutes west of McBride on Highway 16



EXECUTIVE STYLE - EXECUTIVE SIZE
2480 Sq. Ft. Main Floor - Similar Bottom Level including Double Garage & Double Car Port, Two Huge Stone Fireplaces, 5 Bedrooms, 3 Bathrooms, Large Patio, New Roof, Many Upgrades, Nice Landscaping Fronts to Reg. Dist. Park. 2.44 Acres in Dorval Park Subdivision. Clear Title - No Agents
160,000

Phone 569-3320 Evenings & Weekends.

OPEN 24 HOURS

SELF SERVE
GAS & DIESEL
DVD & MOVIE
RENTALS



Husky
569-2441

LOTTERY CENTER



McBRIDE REALTY
CENTER LTD.



Rodger L. Peterson
Owner / Agent

277 Main Street
P.O. Box 729
McBride, B.C. V0J2E0
Bus: (250) 569-2719 or 569-2733
Res. - (250) 569-2793
Fax: (250) 569-2787
E-mail: rodgert@mcbrider Realty.com
www.mcbrider Realty.com
The Center of Real Estate Action in the Robson Valley!!

JENNIFER'S FAMILY DAYCARE

Childcare for children of all ages birth-12 years
Flexible hours
Quality, Licensed Childcare in a Family Setting
569-0150

BACKHOE FOR HIRE

Joe Alspaugh 569-2770

PROPRYAR PRINTING & SIGNS

- TROPHIES
- ENGRAVING
- COLOR SCANNING
- COLOR COPIES FAXES
- T-SHIRTS
- PHOTO COPIES CARDS
- CONFIDENTIAL CARDS
- OCCASIONS
- INVITATIONS CARDS
- BUSINESS CARDS
- LAMINATING
- BINDING
- BANNERS
- SIGN BOARDS
- VEHICLE SIGNS
- MAGNETIC SIGNS
- PLASTIC SIGNS



• AND MUCH MORE •

Home of the Little McBride Paper

Scott & Susan Glines Ph:569-3110
981-5th Ave. Fax:569-0220

THINK ABOUT IT...

The first myth of management is that it exists

DEER MEADOWS GOLF RESORT INC.

Results from Men's Night at Deer Meadows - August 7, 2002:
Long Putt - Joe Koldia / Long Drive - Gerry Smith / K.P. - Joe Koldia / Deuce Pot - John Defries / Low Score - Bob Mitchell & John Defries
Results from Ladies' Night at Deer Meadows - Aug. 8, 2002
Low Score - Anita Jones / Long Drive - Teresa Caputo
Men's night every Wednesday night starting about 4:30p.m.
Ladies night every Thursday night starting about 4:30p.m.
Youth Golf starting again Monday, August 17th at 4:30p.m.

YARD SALES

Yard Sale on Sunday, Aug. 18 from 9am to 5pm at 3107 Plantway Rd. Household, lots of misc., crafts. Refreshments are available.
Multi-Family Garage Sale - If weather permits - #4 Riverbend Trailer Park (by McBride Forest Products) 10:00 a.m. to 5 p.m. NO Early Birds, Please.

Yard Sale - Sat., Aug. 17th - 902 Dominion Street 11:00 a.m. - 4:00p.m. includes motorcycle, bunk beds & other household items.

BIRTHDAY WISHES AUG. 14 - 20

Gary Osterberg, Crystal Cole, Robin Wingie, Sharlin Rowley, Randy McFarland, Pamela Balcaen, David Kraby, Michael Koldia, Nicole Beer, Annie Baker, Glen Stanley, Hank Esser, Ellen Ferguson, Amy Quam, Ben Mullen, Lisa Cowburn, Rhonda Bosley, Ken Hitchens, Kyle Blangy, Wilma Longuskie, Dutch Molendyk, Ana Peasgood, Jodi Clark, Jessie Littlechild, Steve Stapley, Glen Hooker, Jessica Aspelst, Jessica Arnold, and to anyone we missed Happy Birthday.

OPEN HOUSE

Open House Wednesday August 14/02. - 10:00 a.m. - 12:00 noon. Hosted By: McBride District Hospital Pastoral Care Committee. Drop by for coffee and doughnuts. See how the Hospital Garden is doing? Check out the room designed to be a little piece of homey comfort (a.k.a. the Pastoral Care Room). Make yourself comfortable - Have a visit!!!

PARENT AND TOT PROGRAM

For parents and their children from birth to school-age. *Where: Library Annex (building beside the library) *When: Monday's 9:30 a.m. to 11:00 a.m. What: An opportunity for parents to get together with parents of children of similar ages. Children can play while adults visit with each other. *Public nurse, Infant Development Program Consultant, as well as other community resources available for consultation. *For more information call Daylene at 569-3258 **No Fees - A community service provided by The McBride Day Care Society & McBride Public Library.

Take a Break in McBride... B.G.'s Friendliest Town!!

For Sale or Rent
12'x72' Mobile Trailer
in Hatchard's Trailer
Park. Inside completely
redone. 569-0095



- Excavating • Cat Work • Road Building •
 - Land Clearing • Residential & Commercial •
 - No Job Too Big or Small!! •
- Rex & Shelley Hatchard 569-2493



Tuesday - 10 to 5 7 to 9
Wednesday - 10 to 2
Friday - 2 to 9
Saturday - 2 to 5

<http://www.library.mcbride.bc.ca>

library@mcbridebc.net

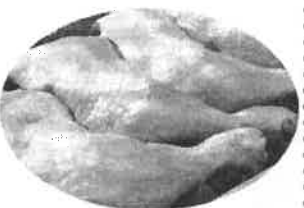
241 Dominion St. (250)569-2411

Turn off the Tube and Read a Book

POEM OF THE WEEK

History is curious stuff
You'd think by now we had enough
Yet the fact remains I fear
They make more of it every year.

SUPER SALE



Chicken Legs Back Attached Family Pack
.88¢ / lb.



Outside Round Oven Roast Family Pack
\$3.49 / lb.



Top Sirloin Grilling Steak Family Pack
\$3.99 / lb.



Inside Round Oven Roast
\$3.69 / lb.



Black Forest Ham Honey Ham or Old Fashioned
\$1.29 / 100g



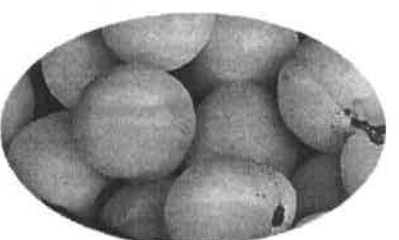
Green Seedless Grapes
\$1.48 / lb.



Green Bell Peppers
.89¢ / lb.



Pickling Cucumbers
\$1.28 / lb.



Fresh Apricots
\$2.98 / lb.



Roger's Sugar
10kg - \$6.89

